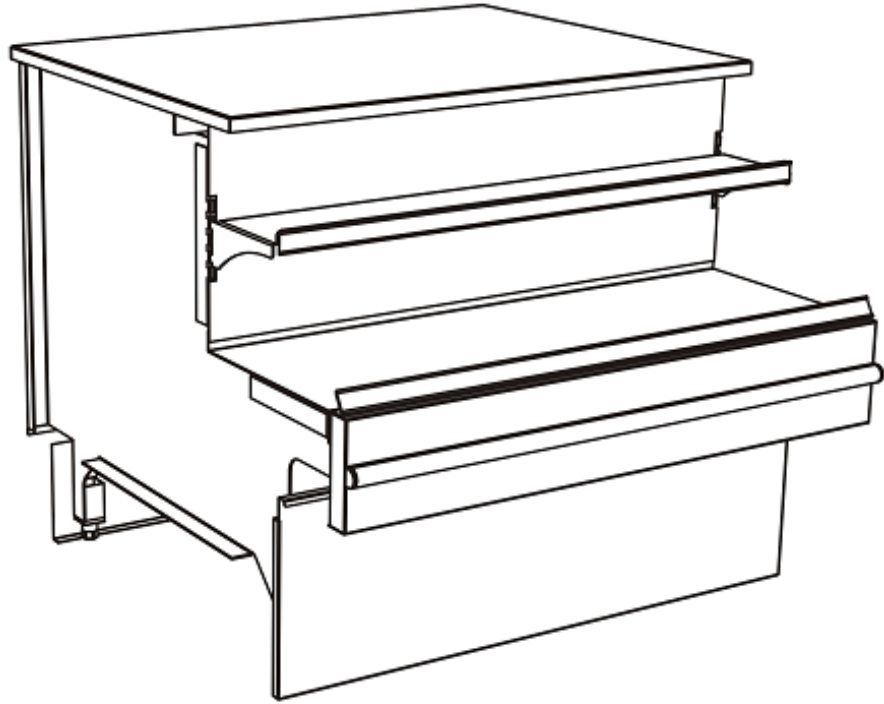


# Front Facing - Sample Station With Front Shelving

## Models

WSP3934.7402  
WSP4834.7402



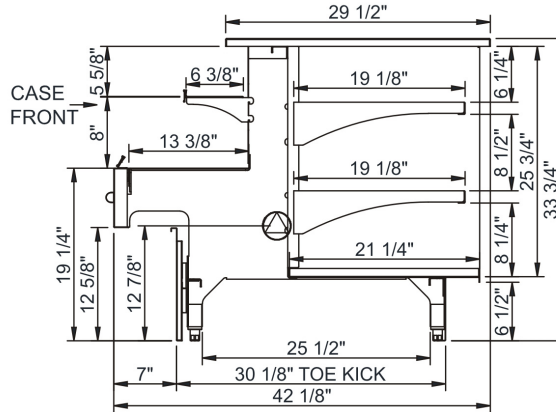
Features	Standard	Options
<b>EXTERIOR COLOR</b>	<input type="checkbox"/> Blue Atlantis	<input type="checkbox"/> Painted (Bronze Pearlescent)
<b>TRIM COLOR</b>	<input type="checkbox"/> Blue Atlantis	<input type="checkbox"/> Painted (Bronze Pearlescent)
<b>BASE SUPPORT</b>	<input type="checkbox"/> Levelers	
<b>BUMPER</b>	<input type="checkbox"/> 1" bumper on front (Gray)	<input type="checkbox"/> 1" bumper on front (#239 Storm Gray)
<b>DECK</b>	<input type="checkbox"/> Blue Atlantis	<input type="checkbox"/> Painted (Bronze Pearlescent)
<b>REAR</b>	<input type="checkbox"/> (2) levels of shelves	
<b>TOP</b>	<input type="checkbox"/> Stainless steel top	
<b>SHELVING</b>	<input type="checkbox"/> Solid shelves, non-lighted (2 levels)	

## Applications

- Bakery service non-refrigerated counter / sample station.

# Front Facing Sample Station With Front Shelving

Model	L x D x H (Lengths include end panels)
WSP3934.7402	39"L x 42-1/8"D x 33-3/4"H
WSP4834.7402	48"L x 42-1/8"D x 33-3/4"H



## IMPORTANT NOTES:

1) Units are supplied with levelers which must be adjusted during installation to ensure the unit is level and plumb.

### WARNING

This product can expose you to chemicals including Urethane (Ethyl Carbamate), which are known to the State of California to cause cancer and birth defects or other reproductive harm. For more information go to [www.P65Warnings.ca.gov](http://www.P65Warnings.ca.gov).

## INTENDED ENVIRONMENT

Designed to operate in ambient conditions of 75°F with 55% relative humidity.

## WARMEST AVG PRODUCT TEMP

Zone	Temp (°F)
1	Ambient

## INTENDED USE OF DISPLAY AREAS

Zone	Intended Use
1	Packaged non-refrigerated products

For more information on any of our products or services please visit us on the web at:

[www.structuralconcepts.com](http://www.structuralconcepts.com)

INFORMATION IS SUBJECT TO CHANGE WITHOUT NOTICE. Visit [www.structuralconcepts.com](http://www.structuralconcepts.com) for the most current specs.