

Front Facing - Dry Bakery - Slicer LH - Pack Out Station

Models

WSP100BSLH.8010

WSP114BSLH.8010



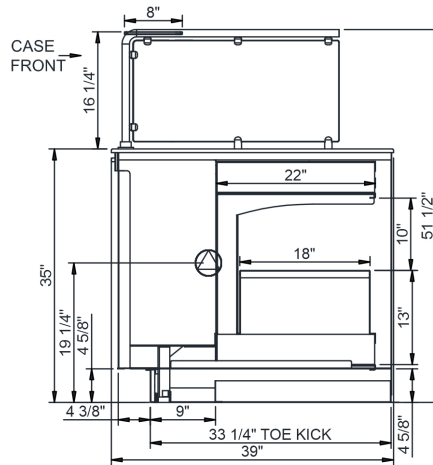
Features	Standard	Options
EXTERIOR COLOR	<input type="checkbox"/> Vinyl planking exterior	<input type="checkbox"/> Laminated (specify color) (confirm pattern/grain direction)
INTERIOR COLOR	<input type="checkbox"/> Stainless steel	
BASE SUPPORT	<input type="checkbox"/> Rail system for shims	
BUMPER END	<input type="checkbox"/> 2" bumper on ends	<input type="checkbox"/> 1" bumper on end (3 rows)
TOP	<input type="checkbox"/> Solid surface (specify color)	
UPPER FRONT PANEL	<input type="checkbox"/> Vinyl planking exterior	<input type="checkbox"/> Laminated (confirm pattern/grain direction)
WORK SURFACE	<input type="checkbox"/> Solid surface (specify color & mfr.)	
SNEEZE GUARD	<input type="checkbox"/> Clear sneeze guard glass w/ stainless steel posts	
ELECTRICAL CONNECT	<input type="checkbox"/> Empty electrical box (wiring supplied by others) (requires separate circuit)	

Applications

- Non-refrigerated end for Inline modules.

Front Facing Dry Bakery - Slicer LH - Pack Out Station

Model	L x D x H (Lengths include end panels)
WSP100BSLH.8010	100"L x 39"D x 51-1/2"H
WSP114BSLH.8010	114"L x 39"D x 51-1/2"H



IMPORTANT NOTES:

1) Units must be shimmed during installation to ensure the unit is level and plumb.



WARNING

This product can expose you to chemicals including Urethane (Ethyl Carbamate), which are known to the State of California to cause cancer and birth defects or other reproductive harm. For more information go to www.P65Warnings.ca.gov.

INTENDED ENVIRONMENT

Designed to operate in ambient conditions of 75°F with 55% relative humidity.

WARMEST AVG PRODUCT TEMP

Zone	Temp (°F)
1	Ambient

INTENDED USE OF DISPLAY AREAS

Zone	Intended Use
1	Packaged / unpackaged non-refrigerated products

INFORMATION IS SUBJECT TO CHANGE WITHOUT NOTICE. Visit www.structuralconcepts.com for the most current specs.



888 E. Porter Rd. Muskegon, MI 49441

231-798-8888

For more information on any of our products or services please visit us on the web at:

www.structuralconcepts.com