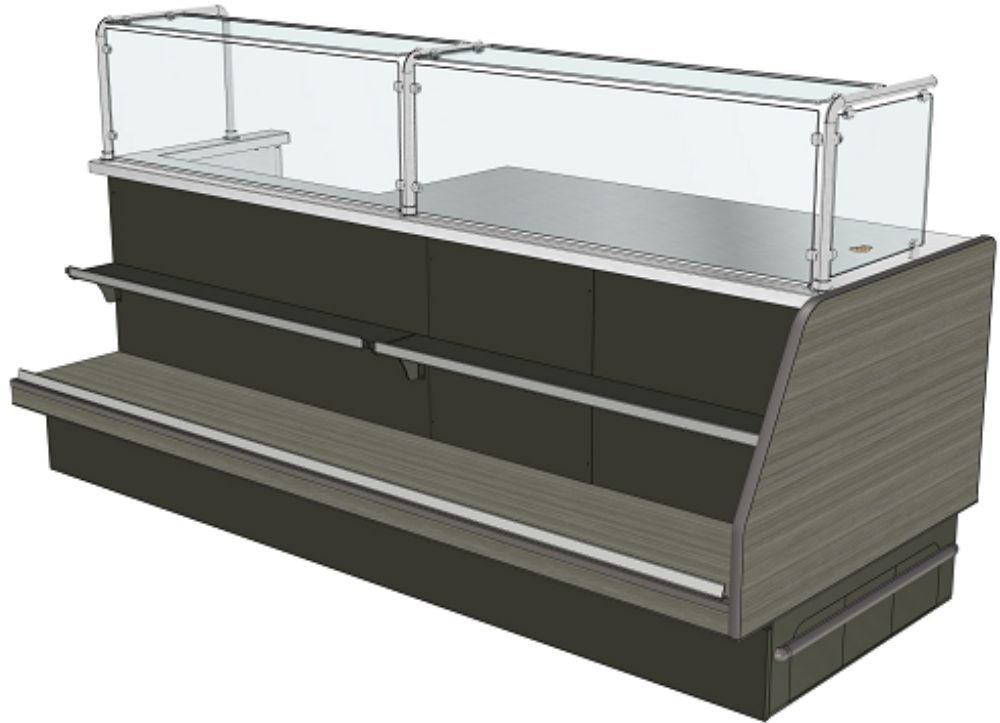


Front Facing - Dry Bakery Display - 8.5' Wide - Stainless Top - Slicer LH - Breadwall - Portico Teak/BZP

Models

WSP100BSLH.7819



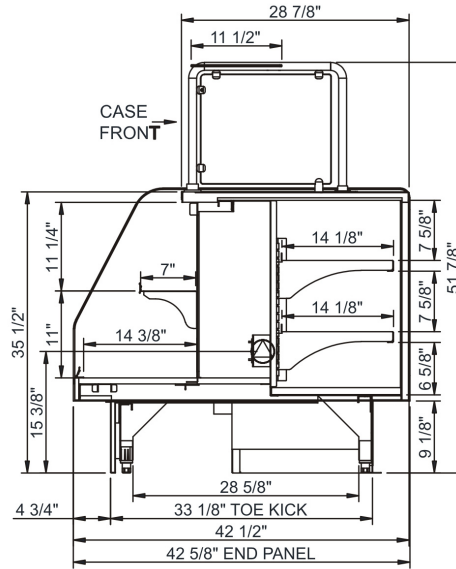
Features	Standard	Options
EXTERIOR COLOR	<input type="checkbox"/> Laminated (Portico Teak)	
INTERIOR COLOR	<input type="checkbox"/> Painted (Bronze Pearlescent)	
LOWER FRONT PANEL COLOR	<input type="checkbox"/> Painted (Bronze Pearlescent)	
BASE SUPPORT	<input type="checkbox"/> Levelers	
BUMPER END	<input type="checkbox"/> 1" bumper on end (#239 Storm Gray)	
BUMPER FRONT	<input type="checkbox"/> Rail bumper on upper front panel	
TOP	<input type="checkbox"/> Stainless steel	
UPPER FRONT PANEL	<input type="checkbox"/> Laminated (Portico Teak)	
SHELVING	<input type="checkbox"/> Solid shelves, non-lighted (1 level)	
SNEEZE GUARD	<input type="checkbox"/> Clear sneeze guard glass w/ stainless steel posts	
ELECTRICAL CONNECT	<input type="checkbox"/> Empty electrical box (wiring supplied by others) (requires separate circuit)	

Applications

- Non-refrigerated end w/ shelving for Inline modules.

Front Facing Dry Bakery Display - 8.5' Wide - Stainless Top - Slicer LH - Breadwall - Portico Teak/BZP

Model	L x D x H (Lengths include end panels)
WSP100BSLH.7819*	101-1/4"L x 42-5/8"D x 51-7/8"H



IMPORTANT NOTES:

- 1) Units must be shimmed during installation to ensure the unit is level and plumb.

⚠️ WARNING

This product can expose you to chemicals including Urethane (Ethyl Carbamate), which are known to the State of California to cause cancer and birth defects or other reproductive harm. For more information go to www.P65Warnings.ca.gov.

INTENDED ENVIRONMENT

Designed to operate in ambient conditions of 75°F with 55% relative humidity.

WARMEST AVG PRODUCT TEMP

Zone	Temp (°F)
1	Ambient

INTENDED USE OF DISPLAY AREAS

Zone	Intended Use
1	Packaged / unpackaged non-refrigerated products

* Additional lead-time required
 INFORMATION IS SUBJECT TO CHANGE WITHOUT NOTICE. Visit www.structuralconcepts.com for the most current specs.

Front Facing - Dry Bakery Display - 8.5' Wide - Stainless Top - Slicer LH - Breadwall - Portico Teak/BZP

DIMENSIONS / SHIPPING				
Model	L"	L1"	L2"	Est Wt (lbs)
WSP100BSLH.7819	N/A	101.250	0.000	N/A

ELECTRICAL													
Model	System Circuit Volts	Ph	Frq	Rated Load Amps	Min Cir Amps	Max OCP Amps	Watts	Wires	NEMA Plug	Amps Lights	Amps Fans	Amps Anti-Sweats	Amps Misc/Refrig/Heat
WSP100BSLH.7819	N/A	CONTACT FACTORY FOR UPDATED INFORMATION											

REFRIGERATION															
Model	Zone	Section	System	Envt	REMOTE REFRIGERATION					GLYCOL / R744 REFRIGERATION					
					SST (°F)	Conv. Rack BTUH	Para. Rack BTUH	Defrost Interval (Hrs)	Defrost Duration (Mins)	Total GPM	Pressure Drop (psi)	Concent (%)	Liquid Temp (°F)		
WSP100BSLH.7819					CONTACT FACTORY FOR UPDATED INFORMATION										

INTENDED ENVIRONMENT
Type I - Designed to operate in ambient conditions of 75°F with 55% relative humidity unless noted otherwise under Envt above.

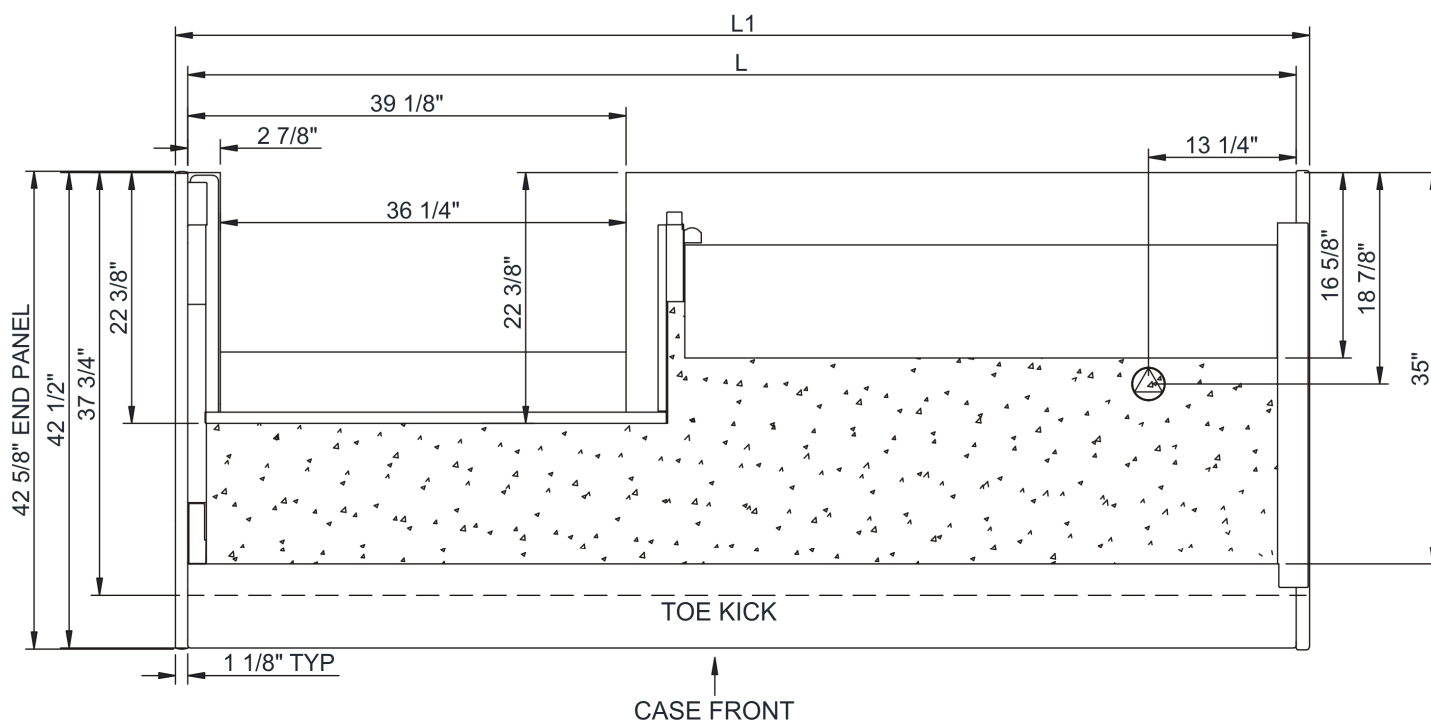
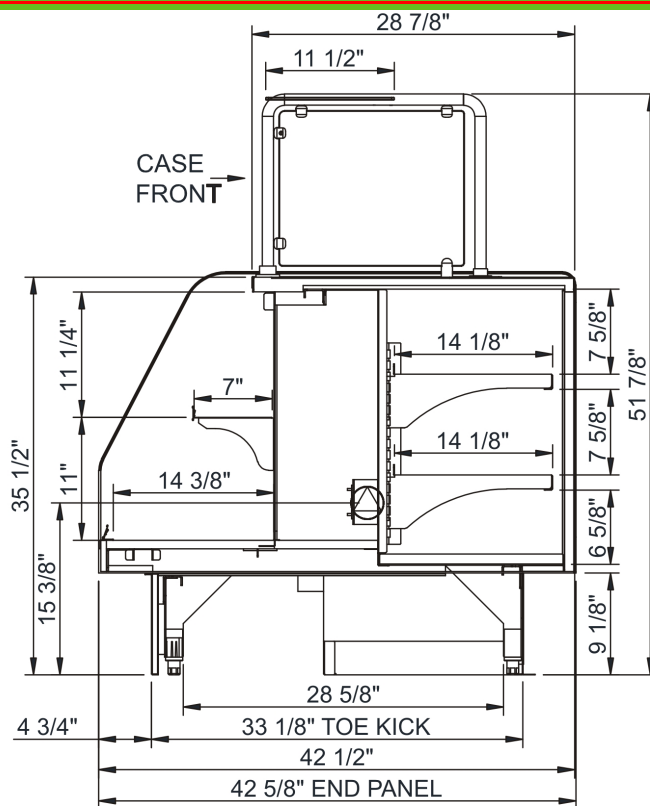
IMPORTANT NOTES
1) Units must be shimmed during installation to ensure the unit is level and plumb.

WARMEST AVERAGE PRODUCT TEMP & INTENDED USE OF ZONES		
Zone	Temp (°F)	Intended Use
1	Ambient	Packaged / unpackaged non-refrigerated products

REGULATORY
None



Front Facing - Dry Bakery Display - 8.5' Wide - Stainless Top - Slicer LH - Breadwall - Portico Teak/BZP



NOTE: ALL DIMENSIONS APPROXIMATE

- ⊗ ELECTRICAL JUNCTION BOX (SUPPLIED WITH 6" LEADS OR POWER CORD).
- ⊙ LOCATION OF DRAIN TUBE FOR REMOTE REF. ONLY (SUPPLIED WITH 3/4" OR 1 1/2" PVC TUBE).
- ⊕ REFRIGERATION LINE CONNECTION.
- ⊞ REMOTE FLOOR SINK & UTILITIES ACCESS AREA.
- ▨ SELF-CONTAINED CASE SERVICE ACCESS AREA.
- ▩ DRY CASE SERVICE ACCESS AREA.