

Technical Information

Reveal® - Refrigerated Service Case

Structural Concepts®

DELIVERING FRESH. ALWAYS.™

DIMENSIONS / SHIPPING

Model	L"	L1"	L2"	Est Wt (lbs)
NR3640RSV	N/A	35.750	4.125	N/A
NR4840RSV	N/A	47.750	4.125	N/A
NR6040RSV	N/A	59.750	4.125	N/A
NR7240RSV	N/A	71.750	4.125	N/A

ELECTRICAL

Model	System Circuit Volts			Ph	Frq	Rated Load Amps	Min Cir Amps	Max OCP Amps	Watts	Wires	NEMA Plug	Amps Lights	Amps Fans	Amps Anti-Sweats	Amps Misc/Refrig/Heat
NR3640RSV	Remote (DX)	Circuit #1	110-120	1	60	1.08	15	15	32	2+G	Leads Single	0.70	0.30		0.08
	Remote (DX)	Circuit #1	110-120	1	60	1.08	15	15	32	2+G	Leads Single	0.70	0.30		0.08
	Self-Contained (R513A)	Circuit #1	110-120	1	60	9.76	15	15	762	2+G	5-15P or L5-15P	0.70	0.90	3.96	4.20
NR4840RSV	Remote (DX)	Circuit #1	110-120	1	60	1.08	15	15	35	2+G	Leads Single	0.70	0.30		0.08
	Remote (DX)	Circuit #1	110-120	1	60	1.08	15	15	35	2+G	Leads Single	0.70	0.30		0.08
	Self-Contained (R513A)	Circuit #1	110-120	1	60	9.76	15	15	765	2+G	5-15P or L5-15P	0.70	0.90	3.96	4.20
NR6040RSV	Remote (DX)	Circuit #1	110-120	1	60	1.38	15	15	52	2+G	Leads Single	0.70	0.60		0.08
	Remote (DX)	Circuit #1	110-120	1	60	1.38	15	15	52	2+G	Leads Single	0.70	0.60		0.08
	Self-Contained (R513A)	Circuit #1	110-120	1	60	10.06	15	15	782	2+G	5-15P or L5-15P	0.70	1.20	3.96	4.20
NR7240RSV	Remote (DX)	Circuit #1	110-120	1	60	1.38	15	15	55	2+G	Leads Single	0.70	0.60		0.08
	Remote (DX)	Circuit #1	110-120	1	60	1.38	15	15	55	2+G	Leads Single	0.70	0.60		0.08
	Self-Contained (R513A)	Circuit #1	110-120	1	60	9.86	15	15	774	2+G	5-15P or L5-15P	0.70	1.20	3.96	4.00

REFRIGERATION

Model	Zone	Section	System	Env't	REMOTE REFRIGERATION					GLYCOL / R744 REFRIGERATION			
					SST (°F)	Conv. Rack BTUH	Para. Rack BTUH	Defrost Interval (Hrs)	Defrost Duration	Total GPM	Pressure Drop (psi)	Concent (%)	Liquid Temp (°F)
NR3640RSV	All	Refrigerator	Remote-DX	Type II	24	864	800	4.00	30.00	N/A	N/A	N/A	N/A
	All	Main	Self-Contained-R513A	Type II	N/A	N/A	N/A	N/A	N/A	N/A	N/A	N/A	N/A
	All	Refrigerator	Remote-DX	Type I	24	778	720	4.00	30.00	N/A	N/A	N/A	N/A
NR4840RSV	All	Refrigerator	Remote-DX	Type II	24	1,123	1,040	4.00	30.00	N/A	N/A	N/A	N/A
	All	Main	Self-Contained-R513A	Type II	N/A	N/A	N/A	N/A	N/A	N/A	N/A	N/A	N/A
	All	Refrigerator	Remote-DX	Type I	24	994	920	4.00	30.00	N/A	N/A	N/A	N/A
NR6040RSV	All	Refrigerator	Remote-DX	Type II	20	1,382	1,280	4.00	25.00	N/A	N/A	N/A	N/A
	All	Main	Self-Contained-R513A	Type II	N/A	N/A	N/A	N/A	N/A	N/A	N/A	N/A	N/A
	All	Refrigerator	Remote-DX	Type I	20	1,231	1,140	4.00	25.00	N/A	N/A	N/A	N/A
NR7240RSV	All	Refrigerator	Remote-DX	Type II	20	1,642	1,520	4.00	30.00	N/A	N/A	N/A	N/A
	All	Main	Self-Contained-R513A	Type II	N/A	N/A	N/A	N/A	N/A	N/A	N/A	N/A	N/A
	All	Refrigerator	Remote-DX	Type I	20	1,469	1,360	4.00	30.00	N/A	N/A	N/A	N/A

INTENDED ENVIRONMENT

Type II - Designed to operate in ambient conditions of 80°F and 55% relative humidity unless noted otherwise under Env't above.

WARMEST AVERAGE PRODUCT TEMP & INTENDED USE OF ZONES

Zone	Temp (°F)	Intended Use
1	40	Unpackaged refrigerated products

IMPORTANT NOTES

- 1) ELECTRICAL NOTE: If GFCI is required, a GFCI breaker MUST be used in lieu of a GFCI receptacle
- 2) Back side of counter must be open or vented the full length of the unit to allow proper ventilation for the refrigeration system.
- 3) Glass warranty only applicable to first point of delivery.

REGULATORY

All Models
 Accordance with AHRI Std 1200
 ETL Listed to UL 471
 ETL Listed to CAN/CSA 22.2 No. 120
 ETL Sanitation to NSF/ANSI 7



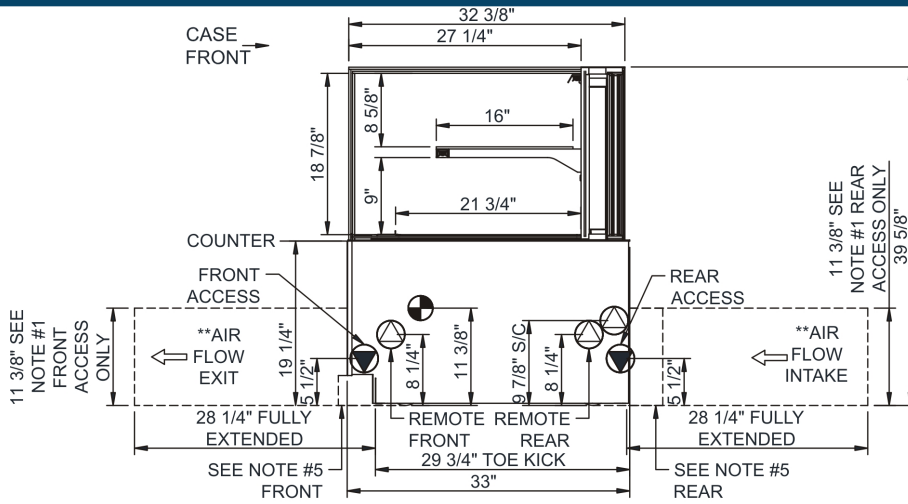
In Accordance with
AHRI Std 1200

Technical Information

Reveal® - Refrigerated Service Case

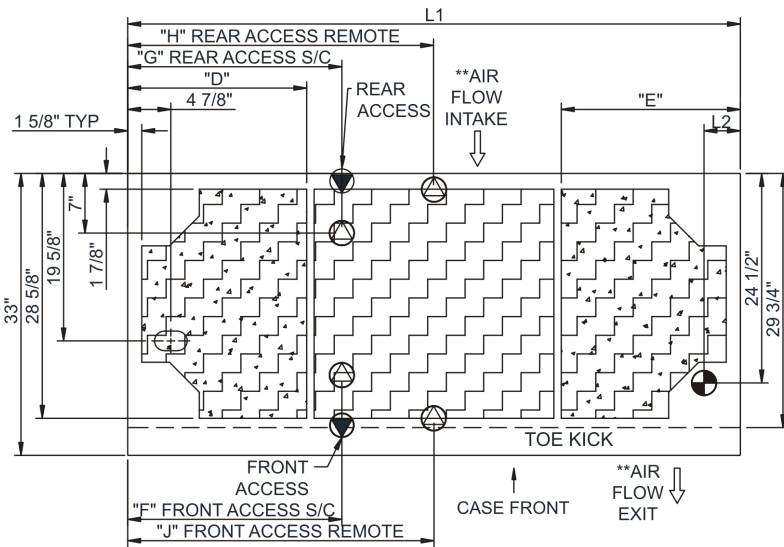
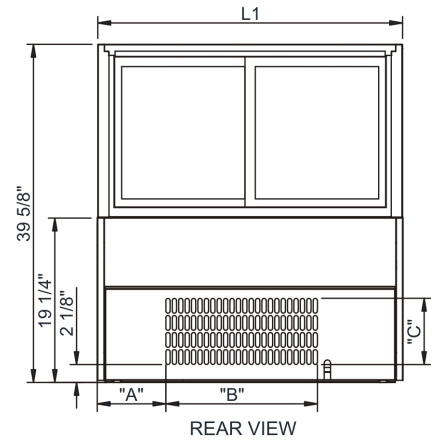
Structural Concepts®

DELIVERING FRESH. ALWAYS.™



NOTES:

1. 11 3/8" TALL, FULL WIDTH OF CASE OPENING IN CABINET OR COUNTER IS REQUIRED TO PULL OUT REFRIGERATION SYSTEM.
2. BACK OF COUNTER / CABINET MUST BE VENTED PROPERLY FOR ADEQUATE AIRFLOW TO CONDENSER.
3. **REPRESENTS REAR PULLOUT REFRIGERATION. AIR FLOW INTAKE AND EXIT DETAILS ARE REVERSED WITH FRONT PULLOUT REFRIGERATION OPTION.
4. SELF-CONTAINED ACCESS ONLY BY PULLING OUT CONDENSER UNIT.
5. 4" OPEN AREA CLEARANCE REQUIRED FOR AIR FLOW FRONT AND REAR OF CASE.



	"A"	"B"	"C"
NR3640RSV	8"	17 3/4"	7 3/4"
NR4840RSV	14"	17 3/4"	7 3/4"
NR6040RSV	26"	17 3/4"	7 3/4"
NR7240RSV	26"	17 3/4"	7 3/4"

	"D"	"E"	"F"	"G"	"H"	"J"
NR3640RSV	N/A	N/A	7"	7"	17 7/8"	17 7/8"
NR4840RSV	9"	9"	12 3/4"	12 3/4"	23 7/8"	23 7/8"
NR6040RSV	9"	21"	12 3/4"	24 3/4"	29 7/8"	29 7/8"
NR7240RSV	21"	21"	25 1/8"	25 1/8"	35 7/8"	35 7/8"

NOTE: ALL DIMENSIONS APPROXIMATE

- ELECTRICAL JUNCTION BOX (SUPPLIED WITH 6" LEADS OR POWER CORD).
- REFRIGERATION LINE CONNECTION.
- SELF-CONTAINED CASE SERVICE ACCESS AREA.
- REMOTE FLOOR SINK & UTILITIES ACCESS AREA.
- DRY CASE SERVICE ACCESS AREA.