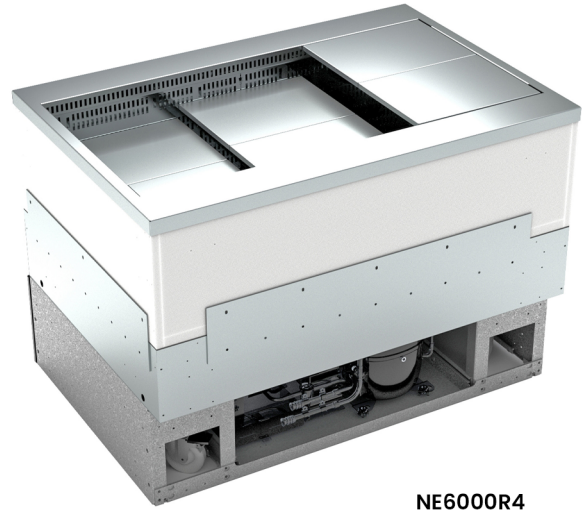


- **NE4800R3** 46-1/4"L x 31-7/8"D x 32-1/2"H
- **NE6000R4** 58-1/4"L x 31-7/8"D x 32-1/2"H
- **NE7200R5** 70-1/4"L x 31-7/8"D x 32-1/2"H

Included

- Breeze~E (Type-II) self-contained refrigeration
- Adjustable decks
- Compressor air intake from rear and out front panel at toe kick. Front panel cannot be blocked.
- Integrated average product temperature of 40°F or less
- NOTE: Pans not supplied with case.
- One year parts & labor; 5 year compressor warranty
- Stainless steel interior

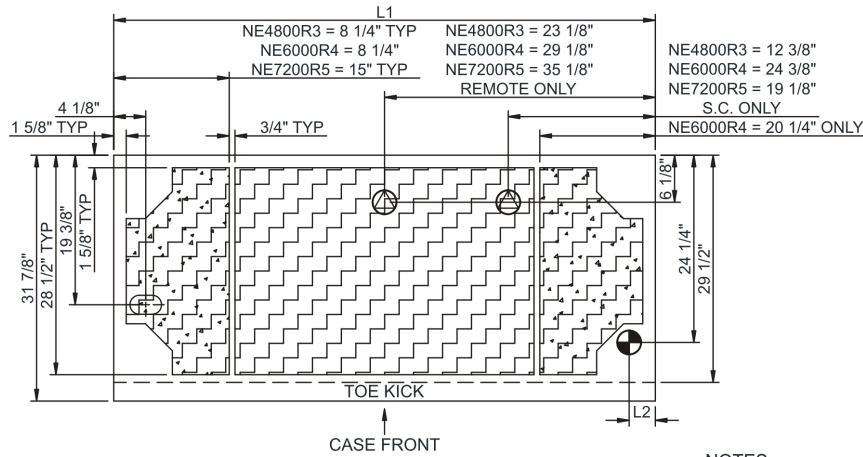


NE6000R4

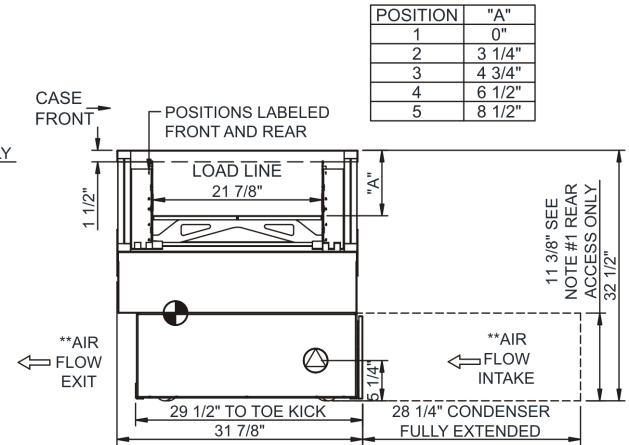
Specify	Standard Features	Additional Options
REAR EXTERIOR COLOR	• None	• Powder coated (stock/non-stock colors) • Powder coated Silversan Black • Stainless steel
BASE SUPPORT	• Adjustable, locking casters	• Shims (remote)
LOWER REAR PANEL	• Powder coated Silversan Black	• Powder coated (stock colors, specify RAL#) • Stainless steel
ELECTRICAL CONNECTION	• 10' Straight blade power cord (self-cont.)	• 10' Locking power cord (self-cont.) • Electrical leads (remote)
REFRIGERATION	• Breeze~E (Type-II) self-contained refrigeration (rear access)	• Note: Remote doesn't incl Conds unit. Floor drain reqd. • Remote w/thermostat, solenoid & TXV
MISCELLANEOUS		• Second year parts & labor warranty (excludes compressor)
ACCESSORIES		• Clean Sweep® coil cleaner (self-cont.)

Intended Environment: Type II - Designed to operate in ambient conditions of 80°F and 55% relative humidity unless noted otherwise in system information below.		
Zone	Intended Product To Be Displayed	Warmest Avg Prod Temp ° F
1	Packaged refrigerated products	40

PLAN VIEW



SIDE VIEW



POSITION	"A"
1	0"
2	3 1/4"
3	4 3/4"
4	6 1/2"
5	8 1/2"

NOTES:
 1. 11 3/8" TALL, FULL WIDTH OF CASE OPENING IN CABINET OR COUNTER IS REQUIRED TO PULL OUT REFRIGERATION SYSTEM.
 2. SEE "COUNTER INSTALLATION GUIDE" FOR AIR FLOW REQUIREMENTS.

NOTE: ALL DIMENSIONS APPROXIMATE

- ELECTRICAL JUNCTION BOX (SUPPLIED WITH 6" LEADS OR POWER CORD).
- LOCATION OF DRAIN TUBE FOR REMOTE REF. ONLY (SUPPLIED WITH 3/4" OR 1 1/2" PVC TUBE).

- REFRIGERATION LINE CONNECTION.
- REMOTE FLOOR SINK & UTILITIES ACCESS AREA.

- SELF-CONTAINED CASE SERVICE ACCESS AREA.
- DRY CASE SERVICE ACCESS AREA.

Model Technical Specifications																
Model	L"	L1"	L2"	System Circuit Volts			Phs	Freq	Amps ***	Watts	Wires	NEMA Plug	SST	Conv. Rack BTUH	Para. Rack BTUH	Est Wt
NE4800R3	N/A	46.25	3.38	Remote (DX)	Circuit #1	110-120	1	60	0.96	92	2+G	Leads Single	20.00	1296	1200	900
				Self-Contained (R513A)	Circuit #1	110-120	1	60	9.46	825	2+G	5-15P or L5-15P	N/A	N/A	N/A	
NE6000R4	N/A	58.25	3.38	Remote (DX)	Circuit #1	110-120	1	60	0.92	86	2+G	Leads Single	20.00	1598	1480	1,000
				Self-Contained (R513A)	Circuit #1	110-120	1	60	13.60	1,059	2+G	5-20P or L5-20P	N/A	N/A	N/A	
NE7200R5	N/A	70.25	3.38	Remote (DX)	Circuit #1	110-120	1	60	0.96	92	2+G	Leads Single	20.00	1901	1760	1,150
				Self-Contained (R513A)	Circuit #1	110-120	1	60	13.64	1,065	2+G	5-20P or L5-20P	N/A	N/A	N/A	

*** Does not include electric defrost on freezer models.

Regulatory Approvals:

All Models
 Accordance with AHRI Std 1200
 ETL Listed to UL 471
 ETL Listed to CAN/CSA 22.2 No. 120
 ETL Sanitation to NSF/ANSI 7



In Accordance with
AHRI Std 1200

DOE 2017
 Energy Efficiency
 Compliant

Important Notes:

- ELECTRICAL NOTE: If GFCI is required, a GFCI breaker MUST be used in lieu of a GFCI receptacle.
- Back side of counter must be open or vented the full length of the unit to allow proper ventilation for the refrigeration system.
- A vent in the front of the counter recommended to help dissipate compressor heat.
- Rear Access Standard - Counter must be configured to allow air to be drawn in the rear and discharged out the front.
- Front Access Option - Counter must be configured to allow air to be drawn in the front and discharged out the rear.
- Unit can intake and discharge from rear with optional rear vented panel.

⚠ WARNING: This product can expose you to chemicals, including Urethane (Ethyl Carbamate), which are known to the State of California to cause cancer and birth defects or other reproductive harm. For more information go to www.P65Warnings.ca.gov.