

Technical Information

Harmony - Refrigerated Self-Service Case

Structural Concepts®

DELIVERING FRESH. ALWAYS.™

DIMENSIONS / SHIPPING				
Model	L"	L1"	L2"	Est Wt (lbs)
HMO2653R	24.750	26.750	4.875	650
HMO3953R	36.750	38.750	4.875	800
HMO5153R	48.750	50.750	4.875	900
HMO6353R	60.625	62.625	4.875	1,100

ELECTRICAL																
Model	System Circuit Volts				Ph	Frq	Rated Load Amps	Min Cir Amps	Max OCP Amps	Watts	Wires	NEMA Plug	Amps Lights	Amps Fans	Amps Anti-Sweats	Amps Misc/Refr/Heat
HMO2653R	Remote (DX)	Circuit #1	110-120	1	60	1.11	15	15	116	2+G	Leads Multiple	0.53	0.30	0.28	N/A	
	Self-Contained (R513A)	Circuit #1	110-120	1	60	14.84	20	20	1,234	2+G	5-20P or L5-20P	0.70	1.80	4.24	8.10	
HMO3953R	Remote (DX)	Circuit #1	110-120	1	60	1.20	15	15	131	2+G	Leads Multiple	0.76	0.30	0.14	N/A	
	Self-Contained (R449A)	Circuit #1	110-120	1	60	14.56	20	20	1,273	2+G	5-20P or L5-20P	N/A	0.90	3.96	9.70	
HMO5153R	Remote (DX)	Circuit #1	110-120	1	60	2.03	15	15	210	2+G	Leads Multiple	0.99	0.60	0.36	0.08	
	Self-Contained (R449A)	Circuit #1	110-120	1	60	16.00	20	20	1,639	2+G	5-20P or L5-20P	0.70	2.60	4.32	9.50	
HMO6353R	Remote (DX)	Circuit #1	110-120	1	60	1.90	15	15	110	2+G	Leads Multiple	0.70	0.90	0.22	0.08	
	Self-Contained (R449A)	Circuit #1	208-240	1	60	12.00	15	15	1,920	2+G	6-15P	0.72	0.90	3.52	7.00	

REFRIGERATION														
Model	Zone	Section	System	Envt	REMOTE REFRIGERATION					GLYCOL / R744 REFRIGERATION				
					SST (°F)	Conv. Rack BTUH	Para. Rack BTUH	Defrost Interval (Hrs)	Defrost Duration	Total GPM	Pressure Drop (psi)	Concent (%)	Liquid Temp (°F)	
HMO2653R	All	Main	Remote-DX	Type I	24	2,566	2,376	4.00	25.00	N/A	N/A	N/A	N/A	
	All	Main	Self-Contained-R513A	Type I	N/A	N/A	N/A	N/A	N/A	N/A	N/A	N/A	N/A	
HMO3953R	All	Main	Remote-DX	Type I	24	3,758	3,480	4.00	25.00	N/A	N/A	N/A	N/A	
	All	Main	Self-Contained-R449A	Type I	N/A	N/A	N/A	N/A	N/A	N/A	N/A	N/A	N/A	
HMO5153R	All	Main	Remote-DX	Type I	24	4,730	4,380	4.00	30.00	N/A	N/A	N/A	N/A	
	All	Main	Self-Contained-R449A	Type I	N/A	N/A	N/A	N/A	N/A	N/A	N/A	N/A	N/A	
HMO6353R	All	Main	Remote-DX	Type I	20	5,702	5,280	4.00	30.00	N/A	N/A	N/A	N/A	
	All	Main	Self-Contained-R449A	Type I	N/A	N/A	N/A	N/A	N/A	N/A	N/A	N/A	N/A	

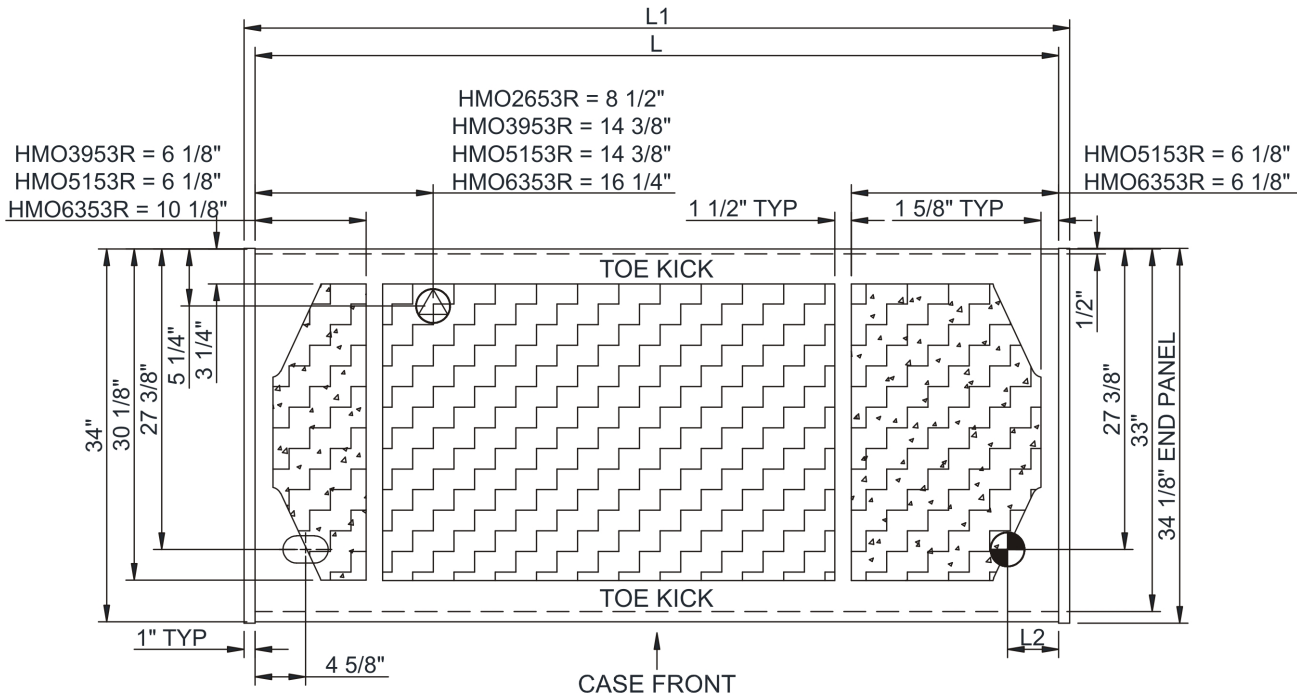
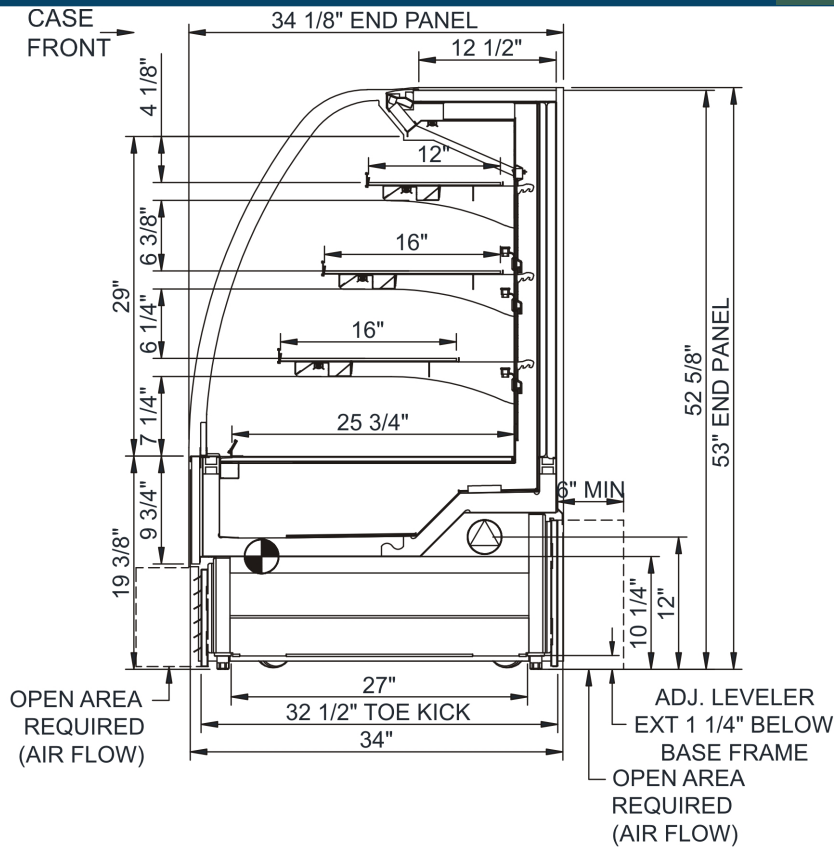
INTENDED ENVIRONMENT		
Type I - Designed to operate in ambient conditions of 75°F with 55% relative humidity unless noted otherwise under Envt above.		
WARMEST AVERAGE PRODUCT TEMP & INTENDED USE OF ZONES		
Zone	Temp (°F)	Intended Use
1	40	Packaged refrigerated products

IMPORTANT NOTES
1) ELECTRICAL NOTE: If GFCI is required, a GFCI breaker MUST be used in lieu of a GFCI receptacle
2) Units are supplied with levelers. They must be adjusted during installation to ensure the unit is level and plum.
3) 35" Minimum door entry clearance required (without shipping skid).







REGULATORY	
All Models	Accordance with AHRI Std 1200 ETL Listed to UL 471 ETL Listed to CAN/CSA 22.2 No. 120 ETL Sanitation to NSF/ANSI 7



In Accordance with
AHRI Std 1200



NOTE: ALL DIMENSIONS APPROXIMATE

-  ELECTRICAL JUNCTION BOX (SUPPLIED WITH 6" LEADS OR POWER CORD).
-  REFRIGERATION LINE CONNECTION.
-  SELF-CONTAINED CASE SERVICE ACCESS AREA.
-  LOCATION OF DRAIN TUBE FOR REMOTE REF. ONLY (SUPPLIED WITH 3/4" OR 1 1/2" PVC TUBE).
-  REMOTE FLOOR SINK & UTILITIES ACCESS AREA.
-  DRY CASE SERVICE ACCESS AREA.