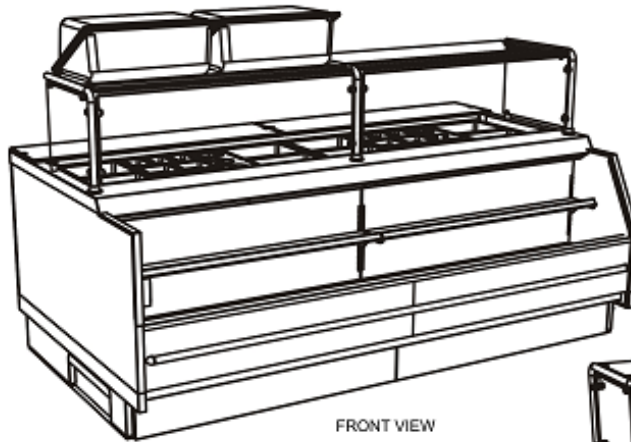


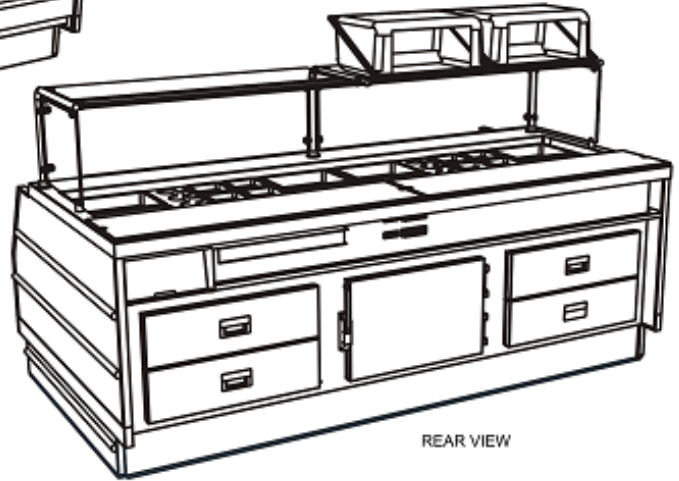
Salad/Sandwich Prep - GP Combination Preparation Case - 8ft - Remote DX - Laminated

Models

GP835RRLB.5718



FRONT VIEW



REAR VIEW

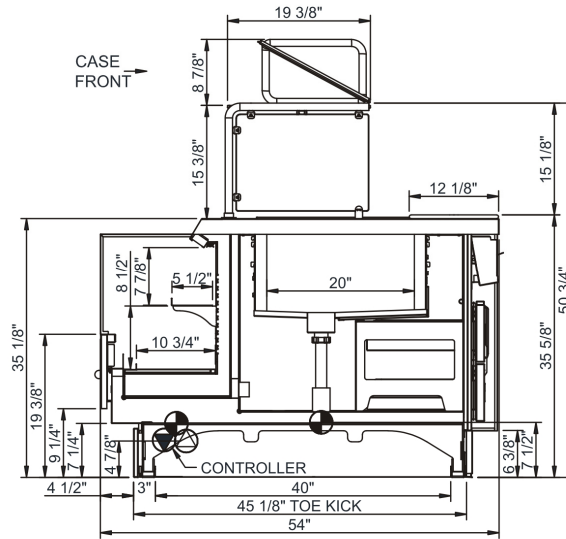
Features	Standard	Options
EXTERIOR COLOR	<input type="checkbox"/> Laminated (Xanadu)	
INTERIOR COLOR	<input type="checkbox"/> Stainless steel	
BASE SUPPORT	<input type="checkbox"/> Rail system for shims	
BUMPER END	<input type="checkbox"/> None	<input type="checkbox"/> 1" bumper (black) (3 rows)
BUMPER FRONT	<input type="checkbox"/> 1" bumper (black)	
END PANELS	<input type="checkbox"/> Full with mirror	
LOWER FRONT PANEL	<input type="checkbox"/> Publix matte black (4-3/8"D)	
REAR STORAGE	<input type="checkbox"/> Refrigerated rear storage w/drawers	
REAR WORK SURFACE	<input type="checkbox"/> White poly	
BINS	<input type="checkbox"/> Acrylic sub roll bin(s) w/o door(s)	
LOWER DISPLAY	<input type="checkbox"/> Solid shelf, non-lighted	
PANS	<input type="checkbox"/> Black pans, (8) 1/2 size, (8) 1/6 size, (6) 1/9 size, (6) Full size & (2) Dressing holders	
SNEEZE GUARD	<input type="checkbox"/> Clear sneeze guard glass w/ stainless steel posts	
LIGHTS	<input type="checkbox"/> LED sneeze guard, top & nose lights	
ELECTRICAL CONNECT	<input type="checkbox"/> Leads	
REFRIGERATION	<input type="checkbox"/> Remote DX refrigeration	

Applications

- Combination Prep merchandiser for packaged / unpackaged refrigerated deli items
- Models used in Prepared Foods & Salad/Sandwich Prep

Salad/Sandwich Prep GP Combination Preparation Case - 8ft - Remote DX - Laminated

Model	L x D x H (Lengths include end panels)
GP835RRLB.5718	96"L x 54"D x 50-3/4"H



IMPORTANT NOTES:

1) Units must be shimmed during installation to ensure unit is level and plumb.

⚠️ WARNING

This product can expose you to chemicals including Urethane (Ethyl Carbamate), which are known to the State of California to cause cancer and birth defects or other reproductive harm. For more information go to www.P65Warnings.ca.gov.

INTENDED ENVIRONMENT

Designed to operate in ambient conditions of 75°F with 55% relative humidity.

WARMEST AVG PRODUCT TEMP

Zone	Temp (°F)
1	38

INTENDED USE OF DISPLAY AREAS

Zone	Intended Use
1	Packaged / unpackaged refrigerated products

Salad/Sandwich Prep - GP Combination Preparation Case - 8ft - Remote DX - Laminated

DIMENSIONS / SHIPPING				
Model	L"	L1"	L2"	Est Wt (lbs)
GP835RRLB.5718	N/A	96.000	3.000	N/A

ELECTRICAL															
Model	System Circuit Volts			Ph	Frq	Rated Load Amps	Min Cir Amps	Max OCP Amps	Watts	Wires	NEMA Plug	Amps Lights	Amps Fans	Amps Anti-Sweats	Amps Misc/Refrig/Heat
GP835RRLB.5718	Remote(N/A)	Circuit #1	110-120	1	60	3.31	15	15	181	2+G	Leads Single	0.70	1.40	1.21	N/A

REFRIGERATION													
Model	Zone	Section	System	Envt	REMOTE REFRIGERATION					GLYCOL / R744 REFRIGERATION			
					SST (°F)	Conv. Rack BTUH	Para. Rack BTUH	Defrost Interval (Hrs)	Defrost Duration (Mins)	Total GPM	Pressure Drop (psi)	Concent (%)	Liquid Temp (°F)
GP835RRLB.5718	All	Main	Remote-N/A	Type I	20	6,480	6,000	4.00	30.00	N/A	N/A	N/A	N/A

INTENDED ENVIRONMENT
 Type I - Designed to operate in ambient conditions of 75°F with 55% relative humidity unless noted otherwise under Envt above.

IMPORTANT NOTES
 1) Units must be shimmed during installation to ensure unit is level and plumb.

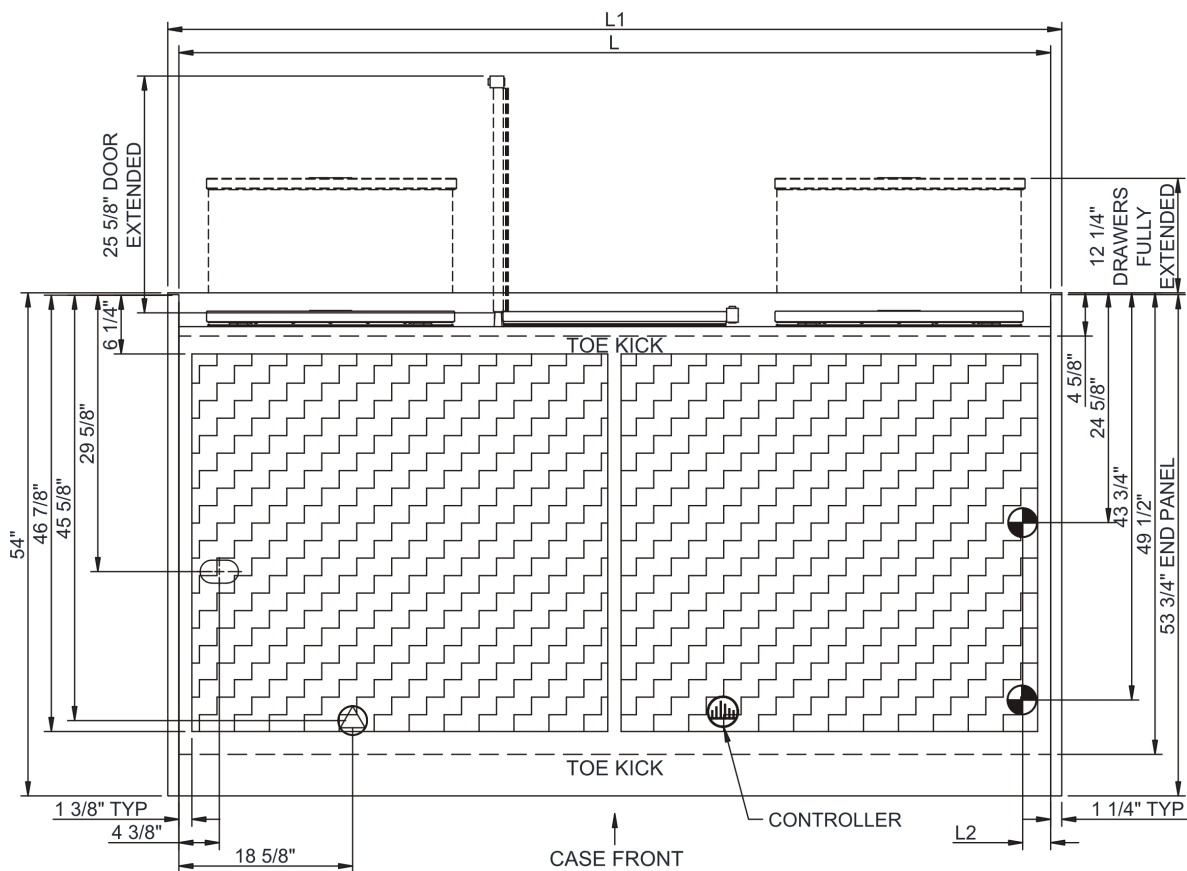
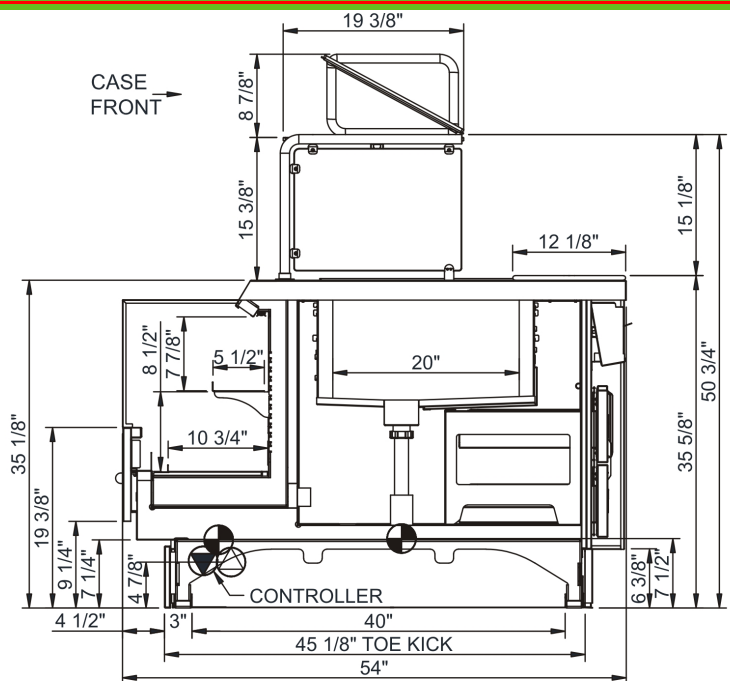
WARMEST AVERAGE PRODUCT TEMP & INTENDED USE OF ZONES		
Zone	Temp (°F)	Intended Use
1	38	Packaged / unpackaged refrigerated products

REGULATORY	
All Models	Accordance with AHRI Std 1200 ETL Listed to UL 471 ETL Listed to CAN/CSA 22.2 No. 120 ETL Sanitation to NSF 7



In Accordance with
AHRI Std 1200

Salad/Sandwich Prep - GP Combination Preparation Case - 8ft - Remote DX - Laminated



NOTE: ALL DIMENSIONS APPROXIMATE

- ⊗ ELECTRICAL JUNCTION BOX (SUPPLIED WITH 6" LEADS OR POWER CORD).
- ⊕ REFRIGERATION LINE CONNECTION.
- ⊙ LOCATION OF DRAIN TUBE FOR REMOTE REF. ONLY (SUPPLIED WITH 3/4" OR 1 1/2" PVC TUBE).
- ⊞ REMOTE FLOOR SINK & UTILITIES ACCESS AREA.
- ⊠ SELF-CONTAINED CASE SERVICE ACCESS AREA.
- ⊡ DRY CASE SERVICE ACCESS AREA.