

# Technical Information

Fusion - GP Combination Prep Case

Structural Concepts®

DELIVERING FRESH. ALWAYS.™

| DIMENSIONS / SHIPPING |        |        |       |              |
|-----------------------|--------|--------|-------|--------------|
| Model                 | L"     | L1"    | L2"   | Est Wt (lbs) |
| GP441RR               | 48.750 | 51.000 | 3.500 | 1,200        |
| GP641RR               | 73.125 | 75.375 | 3.500 | 1,600        |
| GP841RR               | 97.500 | 99.750 | 3.500 | 1,700        |

| ELECTRICAL |                        |            |          |   |    |       |                 |              |              |       |                   |           |             |           |                  |                       |
|------------|------------------------|------------|----------|---|----|-------|-----------------|--------------|--------------|-------|-------------------|-----------|-------------|-----------|------------------|-----------------------|
| Model      | System Circuit Volts   |            |          |   | Ph | Frq   | Rated Load Amps | Min Cir Amps | Max OCP Amps | Watts | Wires             | NEMA Plug | Amps Lights | Amps Fans | Amps Anti-Sweats | Amps Misc/Refrig/Heat |
|            | Remote (DX)            | Circuit #1 | 110-120  | 1 |    |       |                 |              |              |       |                   |           |             |           |                  |                       |
| GP441RR    | Remote (GLYCOL)        | Circuit #1 | 110-120  | 1 | 60 | 3.45  | 15              | 15           | 288          | 2+G   | Leads Multiple    | 1.27      | 1.40        | 0.78      | N/A              |                       |
|            | Self-Contained (R449A) | Circuit #1 | 120/230V | 1 | 60 | 12.00 | 20              | 20           | 2,219        | 3+G   | 14-20P or L14-20P | 0.72      | 2.10        | 4.19      | 6.10             |                       |
|            | Remote (DX)            | Circuit #1 | 110-120  | 1 | 60 | 6.37  | 15              | 15           | 557          | 2+G   | Leads Multiple    | 1.93      | 2.20        | 2.24      | N/A              |                       |
| GP641RR    | Remote (GLYCOL)        | Circuit #1 | 110-120  | 1 | 60 | 5.57  | 15              | 15           | 552          | 2+G   | Leads Multiple    | 1.93      | 1.40        | 2.24      | N/A              |                       |
|            | Self-Contained (R449A) | Circuit #1 | 120/230V | 1 | 60 | 14.74 | 20              | 20           | 2,195        | 3+G   | 14-20P or L14-20P | 0.72      | 3.46        | 4.56      | 6.00             |                       |
|            | Remote (DX)            | Circuit #1 | 110-120  | 1 | 60 | 5.86  | 15              | 15           | 656          | 2+G   | Leads Multiple    | 2.51      | 1.90        | 1.45      | N/A              |                       |
| GP841RR    | Remote (DX)            | Circuit #1 | 110-120  | 1 | 60 | 7.52  | 15              | 15           | 568          | 2+G   | Leads Multiple    | 2.51      | 1.90        | 3.03      | 0.08             |                       |
|            | Self-Contained (R449A) | Circuit #1 | 120/230V | 1 | 60 | 15.55 | 20              | 20           | 2,712        | 3+G   | 14-20P or L14-20P | 2.10      | 2.69        | 4.86      | 8.00             |                       |
|            | Remote (DX)            | Circuit #1 | 110-120  | 1 | 60 | 5.86  | 15              | 15           | 656          | 2+G   | Leads Multiple    | 2.51      | 1.90        | 1.45      | N/A              |                       |

| REFRIGERATION |      |         |                      |        |                      |                 |                 |                        |                  |                             |                     |             |                  |     |  |
|---------------|------|---------|----------------------|--------|----------------------|-----------------|-----------------|------------------------|------------------|-----------------------------|---------------------|-------------|------------------|-----|--|
| Model         | Zone | Section | System               | Envt   | REMOTE REFRIGERATION |                 |                 |                        |                  | GLYCOL / R744 REFRIGERATION |                     |             |                  |     |  |
|               |      |         |                      |        | SST (°F)             | Conv. Rack BTUH | Para. Rack BTUH | Defrost Interval (Hrs) | Defrost Duration | Total GPM                   | Pressure Drop (psi) | Concent (%) | Liquid Temp (°F) |     |  |
| GP441RR       | All  | Main    | Remote-DX            | Type I | 20                   | 4,450           | 4,120           | 4.00                   | 30.00            | N/A                         | N/A                 | N/A         | N/A              | N/A |  |
|               | All  | Main    | Remote-Glycol        | Type I | N/A                  | 4,450           | 4,120           | 4.00                   | 30.00            | 1.50                        | 3.25                | 35%         | 20.00            |     |  |
|               | All  | Main    | Self-Contained-R449A | Type I | N/A                  | N/A             | N/A             | N/A                    | N/A              | N/A                         | N/A                 | N/A         | N/A              |     |  |
| GP641RR       | All  | Main    | Remote-DX            | Type I | 20                   | 5,486           | 5,080           | 4.00                   | 25.00            | N/A                         | N/A                 | N/A         | N/A              |     |  |
|               | All  | Main    | Remote-Glycol        | Type I | N/A                  | 5,486           | 5,080           | 4.00                   | 30.00            | 1.50                        | 7.00                | 35%         | 20.00            |     |  |
|               | All  | Main    | Self-Contained-R449A | Type I | N/A                  | N/A             | N/A             | N/A                    | N/A              | N/A                         | N/A                 | N/A         | N/A              |     |  |
| GP841RR       | All  | Main    | Remote-DX            | Type I | 20                   | 7,690           | 7,120           | 4.00                   | 25.00            | N/A                         | N/A                 | N/A         | N/A              |     |  |
|               | All  | Main    | Remote-DX            | Type I | 20                   | 7,690           | 7,120           | 4.00                   | 25.00            | N/A                         | N/A                 | N/A         | N/A              |     |  |
|               | All  | Main    | Self-Contained-R449A | Type I | N/A                  | N/A             | N/A             | N/A                    | N/A              | N/A                         | N/A                 | N/A         | N/A              |     |  |

| INTENDED ENVIRONMENT   |           |   |
|--|-----------|---|
| Type I - Designed to operate in ambient conditions of 75°F with 55% relative humidity unless noted otherwise under Envt above. |           |   |
| WARMEST AVERAGE PRODUCT TEMP & INTENDED USE OF ZONES   |           |   |
| Zone   | Temp (°F) | Intended Use                                |
| 1  | 40        | Packaged / unpackaged refrigerated products |

| IMPORTANT NOTES   |
|---|
| 1) ELECTRICAL NOTE: If GFCI is required, a GFCI breaker MUST be used in lieu of a GFCI receptacle |
| 2) 55" minimum door entry clearance required (without shipping skid).                             |
| 3) Units must be shimmed during installation to ensure the unit is level and plumb.               |

| REGULATORY |   |
|------------|---|
| All Models | Accordance with AHRI Std 1200<br>ETL Listed to UL 471<br>ETL Listed to CAN/CSA 22.2 No. 120<br>ETL Sanitation to NSF/ANSI 7 |



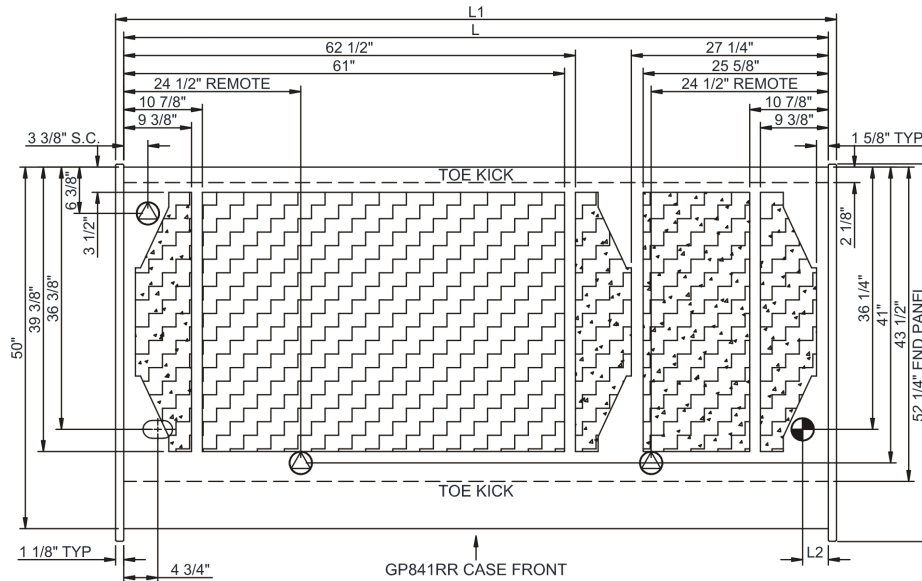
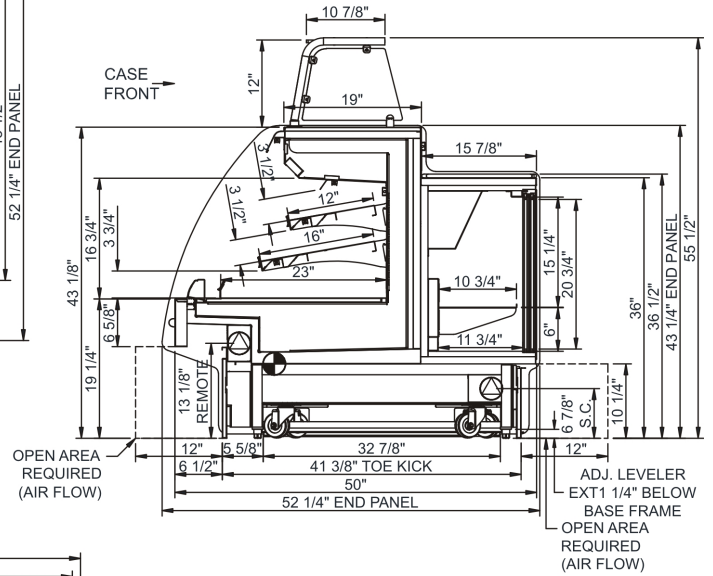
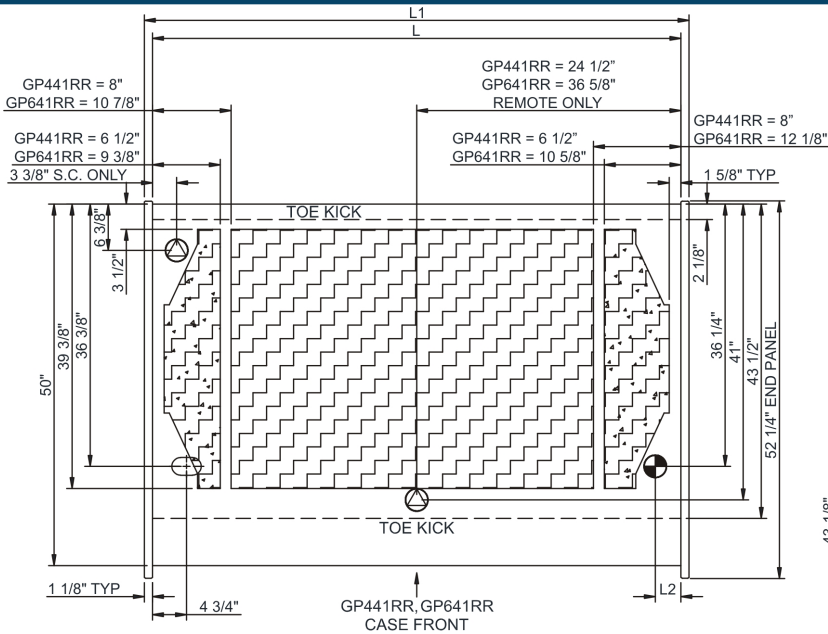
In Accordance with  
**AHRI Std 1200**

# Technical Information

Fusion - GP Combination Prep Case

## Structural Concepts®

DELIVERING FRESH. ALWAYS.™



NOTE: ALL DIMENSIONS APPROXIMATE

-  ELECTRICAL JUNCTION BOX (SUPPLIED WITH 6" LEADS OR POWER CORD).
-  REFRIGERATION LINE CONNECTION.
-  SELF-CONTAINED CASE SERVICE ACCESS AREA.
-  LOCATION OF DRAIN TUBE FOR REMOTE REF. ONLY (SUPPLIED WITH 3/4" OR 1 1/2" PVC TUBE).
-  REMOTE FLOOR SINK & UTILITIES ACCESS AREA.
-  DRY CASE SERVICE ACCESS AREA.