

Fusion

GHSSEH 52"H Refrigerated High-Capacity Self-Service Case - Self-Contained

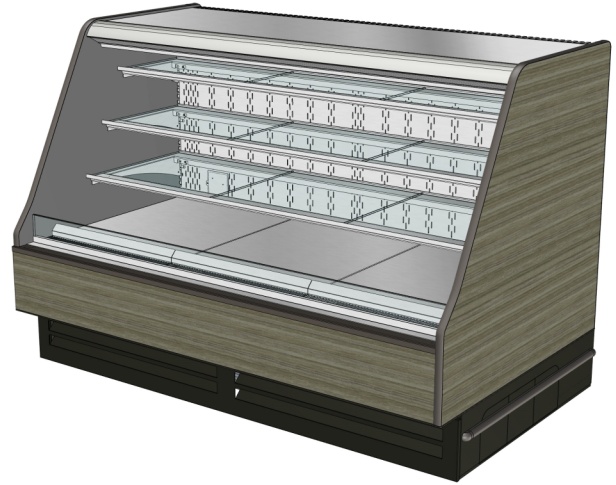
Structural Concepts®

DELIVERING FRESH. ALWAYS.™

- GHSSEH452RSC.7819 51"L x 44-5/8"D x 51-3/4"H
- GHSSEH652RSC.7819 75-3/8"L x 44-5/8"D x 51-3/4"H

Included

- Hydrocarbon refrigerant (R290)
- LED lights



GHSSEH652RSC.7819

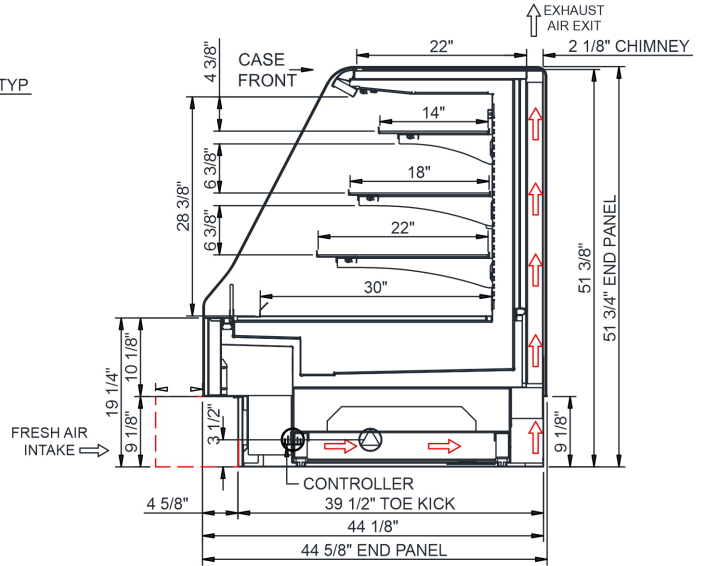
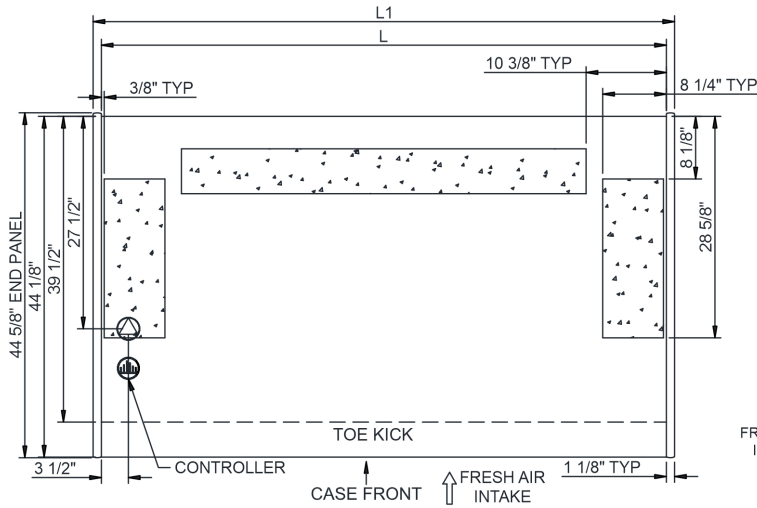
Specify	Standard Features	Additional Options
EXTERIOR COLOR	• Laminated (confirm pattern/grain direction)	
INTERIOR COLOR	• Stainless steel	
BASE SUPPORT	• Levelers	
BUMPER END	• None	• 1" Boston bumper (1 row) (specify color)
BUMPER FRONT	• None	
END PANELS	• Full end panel w/stainless mirrored interior	
LOWER FRONT PANEL	• Painted (stock colors, specify RAL#)	
TOP BOARD	• Stainless steel	
UPPER FRONT PANEL	• Laminated (confirm pattern/grain direction)	
UPPER REAR	• Stainless steel	
PRICE TAG MOLDING	• Price tag molding for deck and shelving	
SHELVING	• Clear glass shelves, lighted	
LIGHTS	• LED top & shelf lights	
ELECTRICAL CONNECTION	• 10' Straight blade power cord (self-cont.)	
REFRIGERATION	• Breeze s/c refrigeration	

Intended Environment: Type I - Designed to operate in ambient conditions of 75°F with 55% relative humidity unless noted otherwise in system information below.

Zone	Intended Product To Be Displayed	Warmest Avg Prod Temp ° F
1	Packaged refrigerated products	40

PLAN VIEW

SIDE VIEW



NOTE: FRESH AIR IN THROUGH LOWER FRONT PANEL AND EXHAUST OUT TOP OF CHIMNEY

NOTE: ALL DIMENSIONS APPROXIMATE

- ELECTRICAL JUNCTION BOX (SUPPLIED WITH 6" LEADS OR POWER CORD).
- LOCATION OF DRAIN TUBE FOR REMOTE REF. ONLY (SUPPLIED WITH 3/4" OR 1 1/2" PVC TUBE).

- REFRIGERATION LINE CONNECTION.
- REMOTE FLOOR SINK & UTILITIES ACCESS AREA.

- SELF-CONTAINED CASE SERVICE ACCESS AREA.
- DRY CASE SERVICE ACCESS AREA.

Model Technical Specifications

Model	L"	L1"	L2"	System Circuit Volts	Circuit #1	Phs	Freq	Amps ***	Watts	Wires	NEMA Plug	SST	Conv. Rack BTUH	Para. Rack BTUH	Est Wt
GHSSEH452RSC.7819	48.75	51.00	.00	Self-Contained (R290)	Circuit #1	1	60	14.79	1,542	2+G	5-20P or L5-20P	N/A	N/A	N/A	N/A
GHSSEH652RSC.7819	73.13	75.38	.00	Self-Contained (R290)	Circuit #1	1	60	16.00	2,830	2+G	6-20P or L6-20P	N/A	N/A	N/A	N/A

*** Does not include electric defrost on freezer models.

Regulatory Approvals:

All Models
 Accordance with AHRI Std 1200
 ETL Listed to UL 471
 ETL Listed to CAN/CSA 22.2 No. 120
 ETL Sanitation to NSF/ANSI 7



In Accordance with
AHRI Std 1200

DOE 2017
Energy Efficiency
Compliant

Important Notes:

1) Units must be shimmed during installation to ensure the unit is level and plumb.

⚠ WARNING: This product can expose you to chemicals, including Urethane (Ethyl Carbamate), which are known to the State of California to cause cancer and birth defects or other reproductive harm. For more information go to www.P65Warnings.ca.gov.