

# Front Facing - GHS 52"H Refrigerated High-Capacity Service Case - BZP

## Models

GHSEH352R.7723  
GHSEH452R.7723



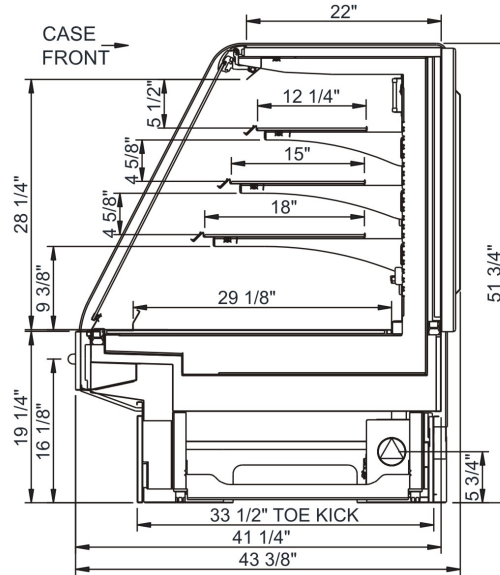
Features	Standard	Options
<b>EXTERIOR COLOR</b>	<input type="checkbox"/> Painted (Bronze Pearlescent)	
<b>INTERIOR COLOR</b>	<input type="checkbox"/> Stainless steel interior	
<b>TRIM COLOR</b>	<input type="checkbox"/> Silver	
<b>END PANELS</b>	<input type="checkbox"/> Full with mirror	
<b>FRONT GLASS</b>	<input type="checkbox"/> Flat angled single pane, lift-up	
<b>UPPER REAR DOORS</b>	<input type="checkbox"/> Reflective glass rear sliding doors	
<b>SHELVING</b>	<input type="checkbox"/> Clear glass shelves (3), lighted	
<b>LIGHTS</b>	<input type="checkbox"/> LED top & shelf lights	
<b>ELECTRICAL CONNECT</b>	<input type="checkbox"/> 6' power cord	
<b>REFRIGERATION</b>	<input type="checkbox"/> Breeze™ w/EnergyWise s/c refrigeration	
<b>MISCELLANEOUS</b>		<input type="checkbox"/> 1" bumper on upper front panel <input type="checkbox"/> Price tag molding for deck and shelving

## Applications

- High-capacity refrigerated service merchandiser for bakery items.

# Front Facing GHS 52"H Refrigerated High-Capacity Service Case - BZP

Model	L x D x H (Lengths include end panels)
GHSEH352R.7723	39"L x 43-3/8"D x 51-3/4"H
GHSEH452R.7723	51"L x 43-3/8"D x 51-3/4"H



## IMPORTANT NOTES:

1) Units must be shimmed during installation to ensure the unit is level and plumb.

### WARNING:

This product can expose you to chemicals, including Urethane (Ethyl Carbamate), which are known to the state of California to cause cancer and birth defects or other reproductive harm. For more information go to [www.P65Warnings.ca.gov](http://www.P65Warnings.ca.gov).

## INTENDED ENVIRONMENT

Designed to operate in ambient conditions of 75°F with 55% relative humidity.

## WARMEST AVG PRODUCT TEMP

Zone	Temp (°F)
1	38

## INTENDED USE OF DISPLAY AREAS

Zone	Intended Use
1	Unpackaged refrigerated products