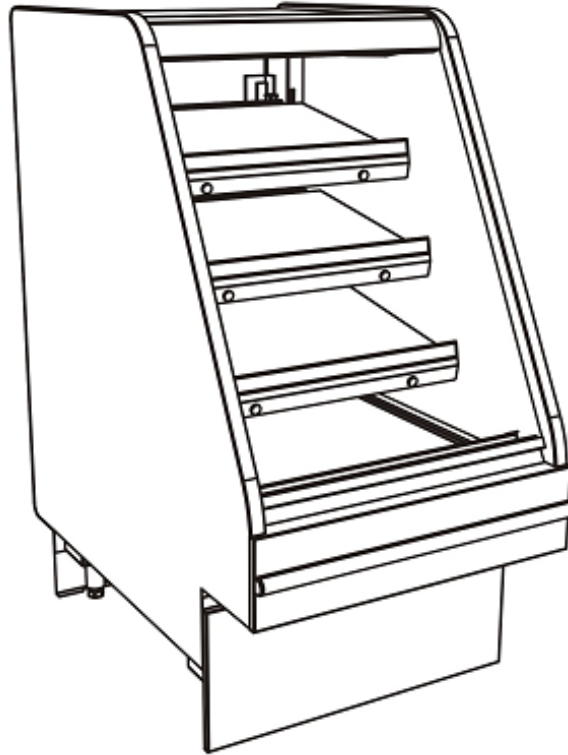


Front Facing - GHS 52"H Heated High-Capacity Service Case

Models

GHSEH252W.7763



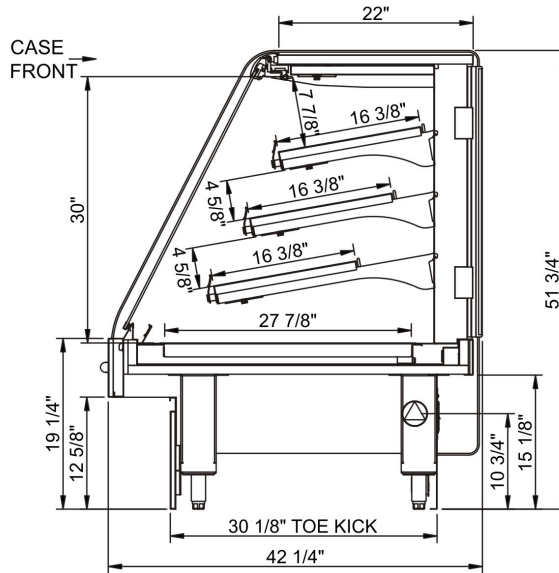
Features	Standard	Options
EXTERIOR COLOR	<input type="checkbox"/> Blue Atlantis	
INTERIOR COLOR	<input type="checkbox"/> Stainless steel	
TRIM COLOR	<input type="checkbox"/> Silver	
BASE SUPPORT	<input type="checkbox"/> Levelers	
BUMPER FRONT	<input type="checkbox"/> 1" bumper	
END PANELS	<input type="checkbox"/> Case to case full end	<input type="checkbox"/> Full with mirror
FRONT GLASS	<input type="checkbox"/> Flat angled single pane, lift-up front glass w/o lock	
TOP PANEL	<input type="checkbox"/> Blue Atlantis	
UPPER REAR	<input type="checkbox"/> Clear glass rear swinging doors w/o lock	
PRICE TAG MOLDING	<input type="checkbox"/> Price tag molding	
SHELVING	<input type="checkbox"/> (3) heated shelves and (1) heated deck	
LIGHTS	<input type="checkbox"/> Ceramic Metal Halide lights	
ELECTRICAL ACCESS	<input type="checkbox"/> Rear electrical access	

Applications

- Service merchandiser for heated bread items.

Front Facing GHS 52"H Heated High-Capacity Service Case

Model	L x D x H (Lengths include end panels)
GHSEH252W.7763	27"L x 42-1/4"D x 51-3/4"H



IMPORTANT NOTES:

- Units are supplied with levelers which must be adjusted during installation to ensure the unit is level and plumb.

INTENDED ENVIRONMENT

Designed to operate in ambient conditions of 75°F with 55% relative humidity.

WARMEST AVG PRODUCT TEMP

Zone	Temp (°F)
All	Ambient

INTENDED USE OF DISPLAY AREAS

Zone	Intended Use
All	Unpackaged non-refrigerated products

INFORMATION IS SUBJECT TO CHANGE WITHOUT NOTICE. Visit www.structuralconcepts.com for the most current specs.



Front Facing - GHS 52"H Heated High-Capacity Service Case

DIMENSIONS / SHIPPING				
Model	L"	L1"	L2"	Est Wt (lbs)
GHSEH252W.7763	N/A	27.000	0.000	N/A

ELECTRICAL																
Model	System Circuit Volts				Ph	Frq	Rated Load Amps	Min Cir Amps	Max OCP Amps	Watts	Wires	NEMA Plug	Amps Lights	Amps Fans	Amps Anti-Sweats	Amps Misc/Refrig/Heat
GHSEH252W.7763	Heat	Circuit #1	110-120	1	60	12.43	20	20	1,480	2+G	Leads Single	0.76	N/A	N/A	11.67	

REFRIGERATION															
Model	Zone	Section	System	Envt	REMOTE REFRIGERATION				GLYCOL / R744 REFRIGERATION						
					SST (°F)	BTUH	Defrost Interval (Hrs)	Defrost Duration (Mins)	Total GPM	Pressure Drop (psi)	Concent (%)	Liquid Temp (°F)			

INTENDED ENVIRONMENT
Type I - Designed to operate in ambient conditions of 75°F with 55% relative humidity unless noted otherwise under Envt above.

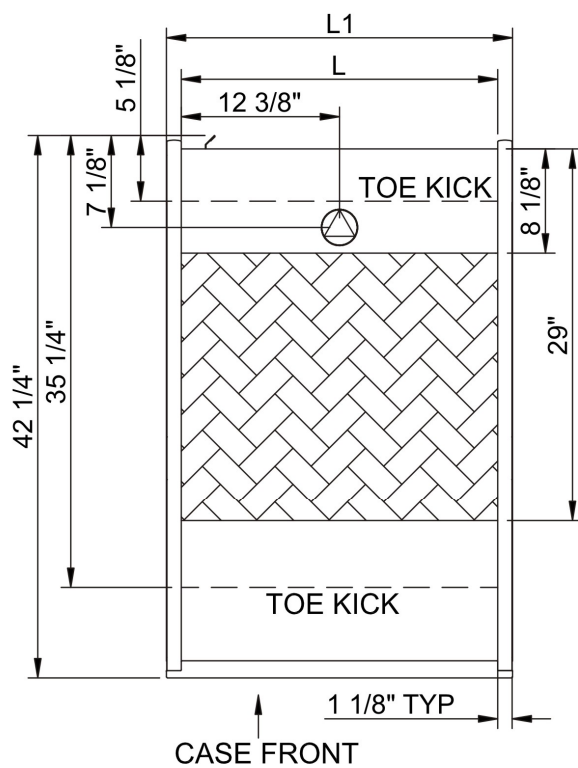
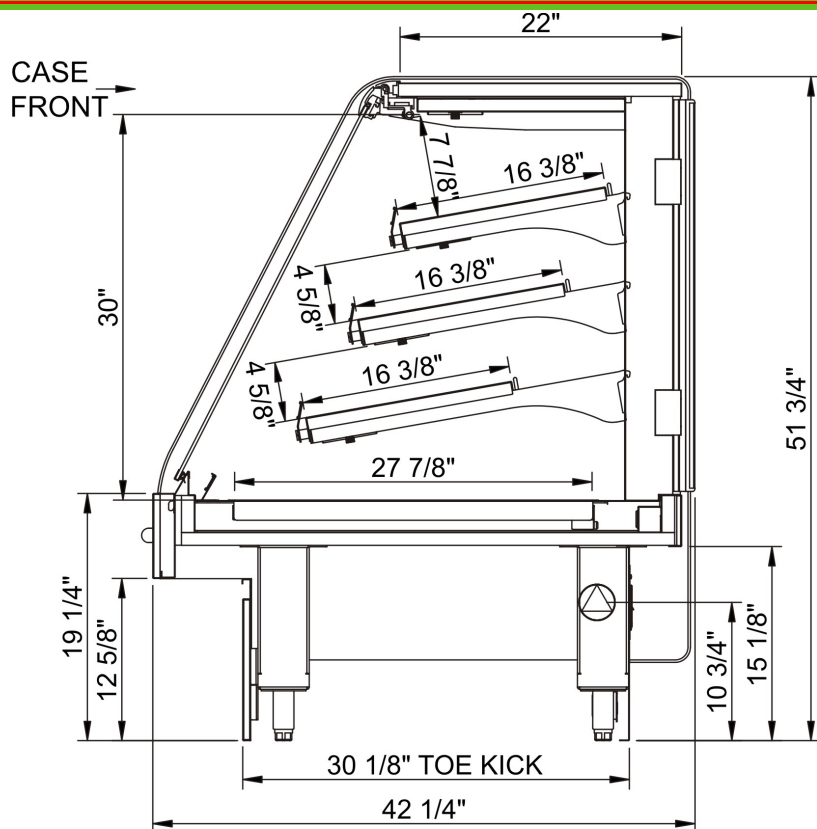
IMPORTANT NOTES
1) Units are supplied with levelers which must be adjusted during installation to ensure the unit is level and plumb.

WARMEST AVERAGE PRODUCT TEMP & INTENDED USE OF ZONES		
Zone	Temp (°F)	Intended Use
All	Ambient	Unpackaged non-refrigerated products

REGULATORY	
All Models	ETL Listed to UL 197 ETL Listed to CAN/CSA 22.2 No. 109 ETL Sanitation to NSF 4



Front Facing - GHS 52"H Heated High-Capacity Service Case



NOTE: ALL DIMENSIONS APPROXIMATE

- ⊗ ELECTRICAL JUNCTION BOX (SUPPLIED WITH 6" LEADS OR POWER CORD).
- ⊙ LOCATION OF DRAIN TUBE FOR REMOTE REF. ONLY (SUPPLIED WITH 3/4" OR 1 1/2" PVC TUBE).

- ⊕ REFRIGERATION LINE CONNECTION.
- ⊞ REMOTE FLOOR SINK & UTILITIES ACCESS AREA.

- ▨ SELF-CONTAINED CASE SERVICE ACCESS AREA.
- ▩ DRY CASE SERVICE ACCESS AREA.