

Technical Information

Oasis - FSIB Refrigerated Self-Service Produce Case

Structural Concepts®

DELIVERING FRESH. ALWAYS.™

DIMENSIONS / SHIPPING

Model	L"	L1"	L2"	Est Wt (lbs)
FSIB4R	48.625	50.875	24.375	N/A
FSIB8R	95.875	98.125	37.500	N/A

ELECTRICAL

Model	System Circuit Volts			Ph	Frq	Rated Load Amps	Min Cir Amps	Max OCP Amps	Watts	Wires	NEMA Plug	Amps Lights	Amps Fans	Amps Anti-Sweats	Amps Misc/Refrig/Heat
FSIB4R	Remote (R404A)	Circuit #1	110-120	1	60	0.80	15	15	64	2+G	Leads Single		0.62	0.18	N/A
	Self-Contained (R449A)	Circuit #1	208-240	1	60	6.96	15	15	1,221	2+G	6-15P	N/A	0.86	4.14	6.10
FSIB8R	Remote (R404A)	Circuit #1	110-120	1	60	1.60	15	15	128	2+G	Leads Single		1.24	0.36	N/A
	Self-Contained (R449A)	Circuit #1	208	3	60	12.00	20	20	2,776	3+G	L15-20P	N/A	1.16	3.59	8.70

REFRIGERATION

Model	Zone	Section	System	Env't	REMOTE REFRIGERATION					GLYCOL / R744 REFRIGERATION			
					SST (°F)	Conv. Rack BTUH	Para. Rack BTUH	Defrost Interval (Hrs)	Defrost Duration	Total GPM	Pressure Drop (psi)	Concent (%)	Liquid Temp (°F)
FSIB4R	All	Main	Self-Contained-R449A	Type I	N/A	N/A	N/A	N/A	N/A	N/A	N/A	N/A	N/A
	All	Main	Remote-R404A	Type I	20	3,110	2,880	4.00	30.00	N/A	N/A	N/A	N/A
FSIB8R	All	Main	Remote-R404A	Type I	20	8,078	7,480	4.00	30.00	N/A	N/A	N/A	N/A
	All	Main	Self-Contained-R449A	Type I	N/A	N/A	N/A	N/A	N/A	N/A	N/A	N/A	N/A

INTENDED ENVIRONMENT

Type I - Designed to operate in ambient conditions of 75°F with 55% relative humidity unless noted otherwise under Env't above.

WARMEST AVERAGE PRODUCT TEMP & INTENDED USE OF ZONES

Zone	Temp (°F)	Intended Use
1	40	Packaged / unpackaged refrigerated products

IMPORTANT NOTES

- 1) ELECTRICAL NOTE: If GFCI is required, a GFCI breaker MUST be used in lieu of a GFCI receptacle.
- 2) 60" Minimum door entry clearance required (Without shipping skid) for Remote unit & 64" for Self-Contained.
- 3) Remote units are supplied with levelers which must be adjusted during installation to ensure the unit is level and plumb.

REGULATORY

All Models	Accordance with AHRI Std 1200 ETL Listed to UL 471 ETL Listed to CAN/CSA 22.2 No. 120 ETL Sanitation to NSF/ANSI 7
------------	---



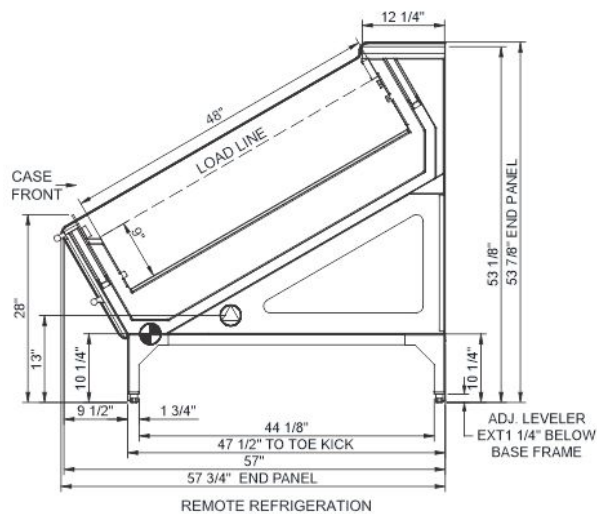
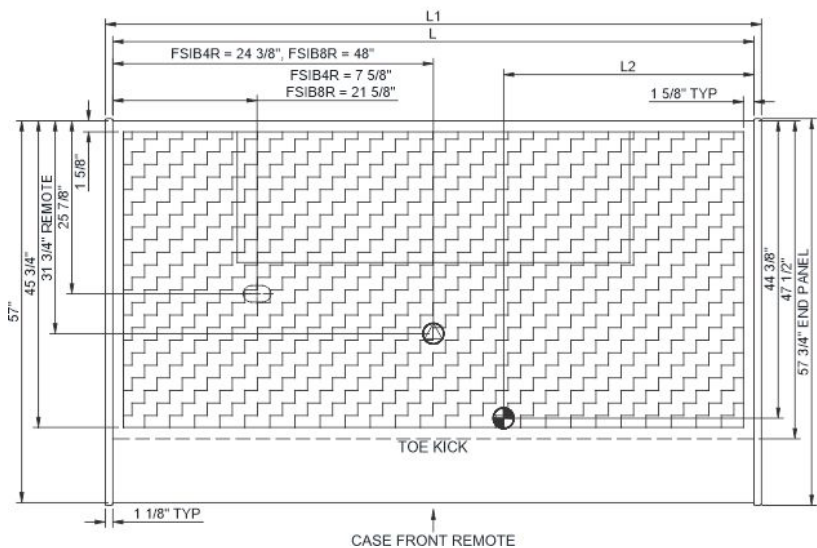
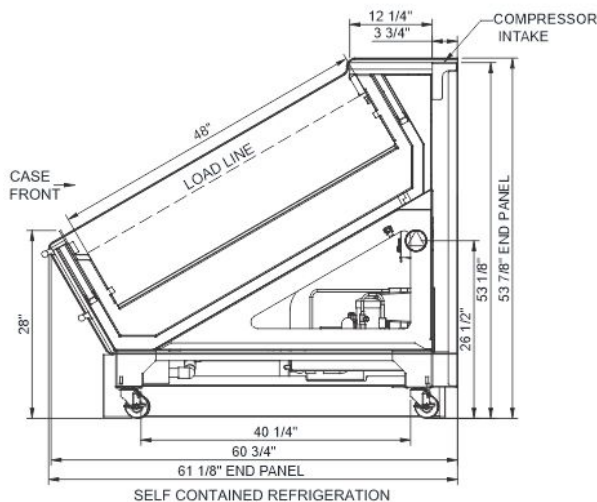
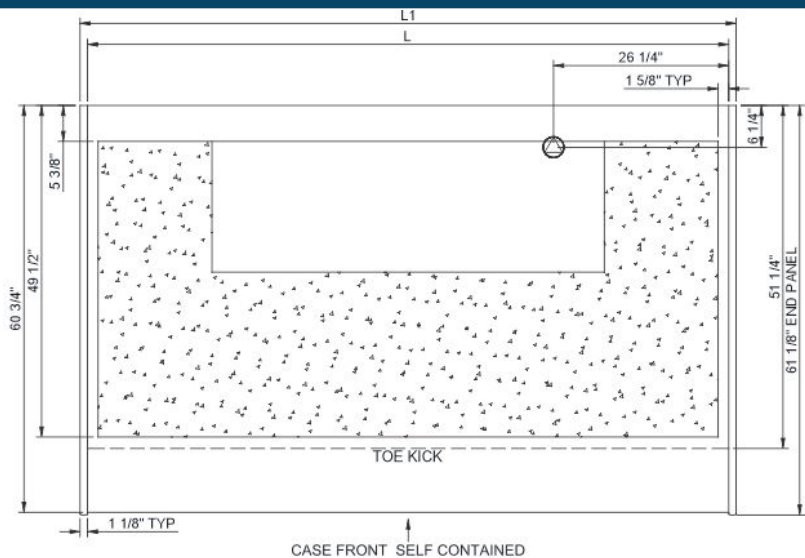
In Accordance with
AHRI Std 1200

Technical Information

Oasis - FSIB Refrigerated Self-Service Produce Case

Structural Concepts®

DELIVERING FRESH. ALWAYS.™



NOTE: ALL DIMENSIONS APPROXIMATE

- ELECTRICAL JUNCTION BOX (SUPPLIED WITH 6" LEADS OR POWER CORD).
- LOCATION OF DRAIN TUBE FOR REMOTE REF. ONLY (SUPPLIED WITH 3/4" OR 1 1/2" PVC TUBE).

- REFRIGERATION LINE CONNECTION.
- REMOTE FLOOR SINK & UTILITIES ACCESS AREA.

- SELF-CONTAINED CASE SERVICE ACCESS AREA.
- DRY CASE SERVICE ACCESS AREA.