

Floral - FR Straight Open Upright Case w/ Convertible Shelves - Remote DX w/ Controller & LED

DIMENSIONS / SHIPPING				
Model	L"	L1"	L2"	Est Wt (lbs)
FR6C.6527	N/A	74.250	3.000	N/A
FR8C.6527	N/A	93.125	3.000	N/A

ELECTRICAL															
Model	System Circuit Volts			Ph	Frq	Rated Load Amps	Min Cir Amps	Max OCP Amps	Watts	Wires	NEMA Plug	Amps Lights	Amps Fans	Amps Anti-Sweats	Amps Misc/Refrig/Heat
FR6C.6527	Remote(DX)	Circuit #1	110-120	1	60	2.14	15	15	136	2+G	Leads Multiple	0.70	0.90	0.54	N/A
FR8C.6527	Remote(DX)	Circuit #1	110-120	1	60	2.96	15	15	123	2+G	Leads Single	1.40	1.20	0.36	N/A

REFRIGERATION													
Model	Zone	Section	System	Envt	REMOTE REFRIGERATION					GLYCOL / R744 REFRIGERATION			
					SST (°F)	Conv. Rack BTUH	Para. Rack BTUH	Defrost Interval (Hrs)	Defrost Duration	Total GPM	Pressure Drop (psi)	Concent (%)	Liquid Temp (°F)
FR6C.6527	All	Refrigerator	Remote-DX	Type I	26	10,368	9,600	4.00	30.00	N/A	N/A	N/A	N/A
FR8C.6527	All	Refrigerator	Remote-DX	Type I	26	14,170	13,120	3.00	25.00	N/A	N/A	N/A	N/A

INTENDED ENVIRONMENT		
Type I - Designed to operate in ambient conditions of 75°F with 55% relative humidity unless noted otherwise under Envt above.		
WARMEST AVERAGE PRODUCT TEMP & INTENDED USE OF ZONES		
Zone	Temp (°F)	Intended Use
1	38	Floral products

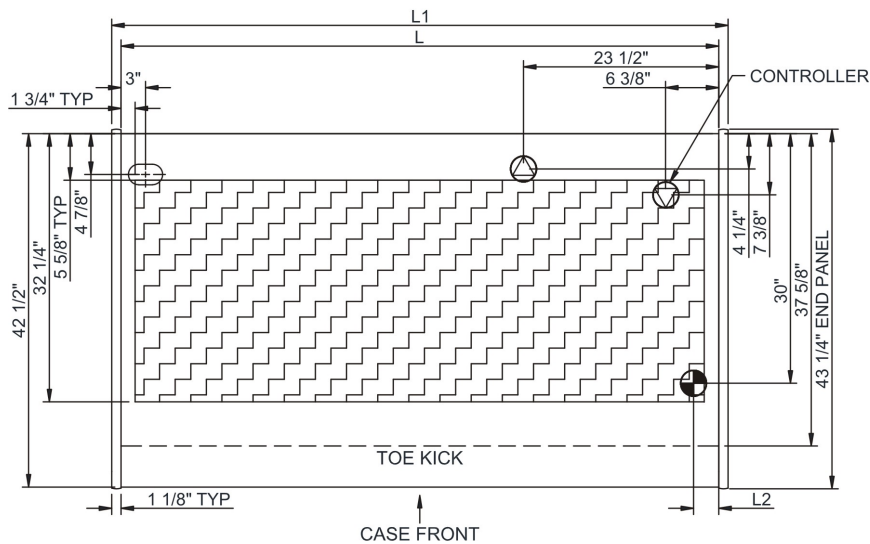
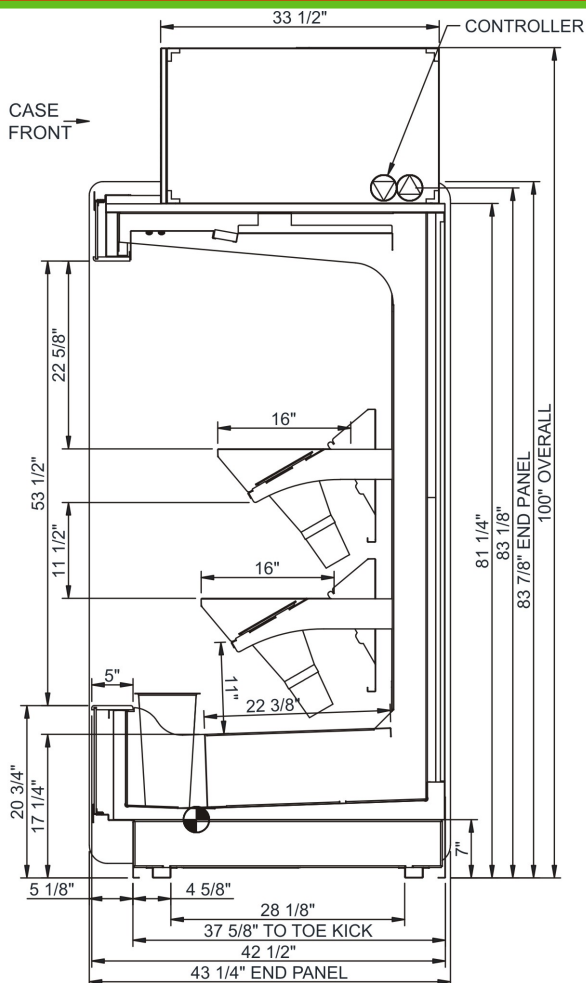
IMPORTANT NOTES

REGULATORY	
All Models	Accordance with AHRI Std 1200 ETL Listed to UL 471 ETL Listed to CAN/CSA 22.2 No. 120



In Accordance with
AHRI Std 1200

Floral - FR Straight Open Upright Case w/ Convertible Shelves - Remote DX w/ Controller & LED



NOTE: ALL DIMENSIONS APPROXIMATE

-  ELECTRICAL JUNCTION BOX (SUPPLIED WITH 6" LEADS OR POWER CORD).
-  REFRIGERATION LINE CONNECTION.
-  SELF-CONTAINED CASE SERVICE ACCESS AREA.
-  LOCATION OF DRAIN TUBE FOR REMOTE REF. ONLY (SUPPLIED WITH 3/4" OR 1 1/2" PVC TUBE).
-  REMOTE FLOOR SINK & UTILITIES ACCESS AREA.
-  DRY CASE SERVICE ACCESS AREA.