

Floral - FLP Straight Outside RH Wrap Open Low Profile Case - Remote DX w/ Dixell Controller

| DIMENSIONS / SHIPPING | | | | |
|-----------------------|-----|---------|--------|--------------|
| Model | L" | L1" | L2" | Est Wt (lbs) |
| FLP6OWR.5589.6527 | N/A | 111.750 | 18.000 | N/A |

| ELECTRICAL | | | | | | | | | | | | | | | | |
|-------------------|-----------------------|------------|---------|---|----|------|-----------------|--------------|--------------|-------|----------------|-----------|-------------|-----------|------------------|-----------------------|
| Model | System Circuit Volts | | | | Ph | Frq | Rated Load Amps | Min Cir Amps | Max OCP Amps | Watts | Wires | NEMA Plug | Amps Lights | Amps Fans | Amps Anti-Sweats | Amps Misc/Refrig/Heat |
| FLP6OWR.5589.6527 | Remote(DX)-Type I Env | Circuit #1 | 110-120 | 1 | 60 | 1.84 | 15 | 15 | 173 | 2+G | Leads Multiple | | 1.40 | 0.44 | N/A | |

| REFRIGERATION | | | | | | | | | | | | | | |
|-------------------|------|---------|----------------------|--------|----------------------|-----------------|-----------------|------------------------|------------------|-----------------------------|---------------------|-------------|------------------|--|
| Model | Zone | Section | System | Envt | REMOTE REFRIGERATION | | | | | GLYCOL / R744 REFRIGERATION | | | | |
| | | | | | SST (°F) | Conv. Rack BTUH | Para. Rack BTUH | Defrost Interval (Hrs) | Defrost Duration | Total GPM | Pressure Drop (psi) | Concent (%) | Liquid Temp (°F) | |
| FLP6OWR.5589.6527 | All | Front | Remote-DX-Type I Env | Type I | 26 | 10,519 | 9,740 | 4.00 | 30.00 | N/A | N/A | N/A | N/A | |

| INTENDED ENVIRONMENT | | |
|--|-----------|-----------------|
| WARMEST AVERAGE PRODUCT TEMP & INTENDED USE OF ZONES | | |
| Zone | Temp (°F) | Intended Use |
| 1 | 38 | Floral products |

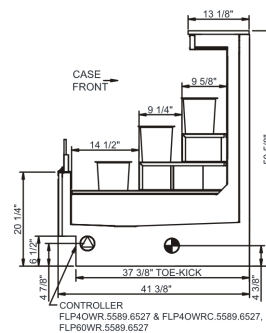
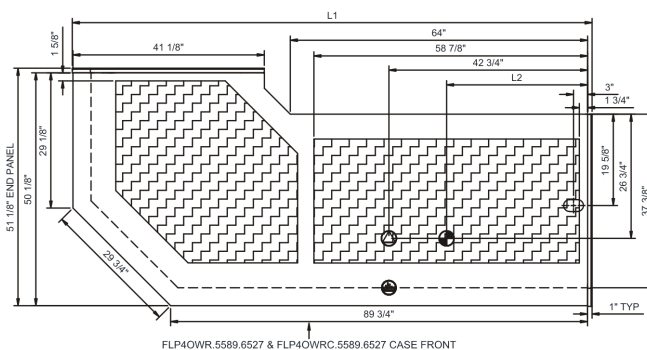
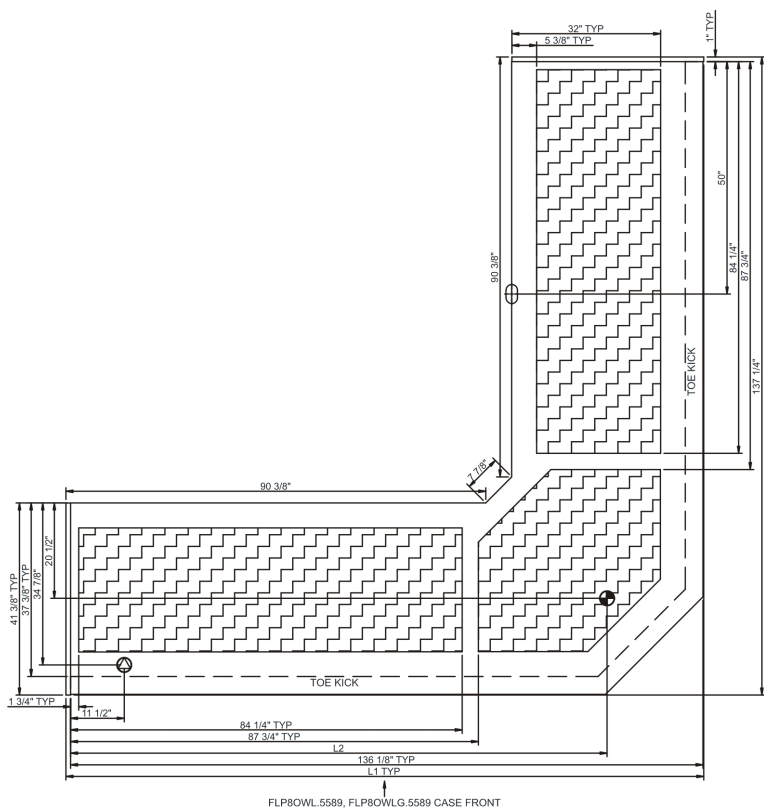
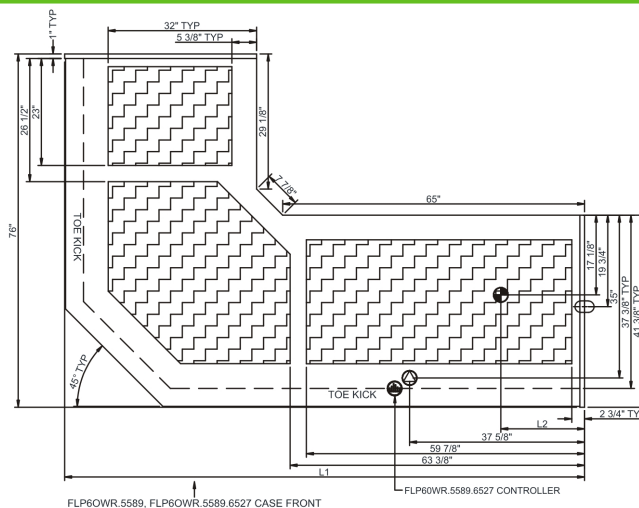
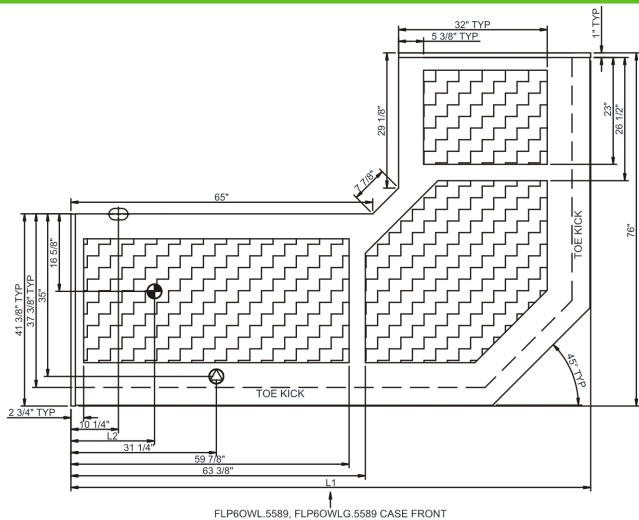
| IMPORTANT NOTES |
|---|
| 1) Units must be leveled during installation to ensure the unit is level and plumb. |

| REGULATORY | |
|------------|---|
| All Models | Accordance with AHRI Std 1200 ETL Listed to UL 471 ETL Listed to CAN/CSA 22.2 No. 120 |



In Accordance with
AHRI Std 1200

Floral - FLP Straight Outside RH Wrap Open Low Profile Case - Remote DX w/ Dixell Controller



NOTE: ALL DIMENSIONS APPROXIMATE

-  ELECTRICAL JUNCTION BOX (SUPPLIED WITH 6" LEADS OR POWER CORD).
-  REFRIGERATION LINE CONNECTION.
-  SELF-CONTAINED CASE SERVICE ACCESS AREA.
-  LOCATION OF DRAIN TUBE FOR REMOTE REF. ONLY (SUPPLIED WITH 3/4" OR 1 1/2" PVC TUBE).
-  REMOTE FLOOR SINK & UTILITIES ACCESS AREA.
-  DRY CASE SERVICE ACCESS AREA.