

Technical Information

Allure - FLP Straight Inside Wrap Open Low Profile LH or RH Case - Remote CO2

Structural Concepts®

DELIVERING FRESH. ALWAYS.™

DIMENSIONS / SHIPPING				
Model	L"	L1"	L2"	Est Wt (lbs)
FLP10WRC.5589.7716	N/A	115.250	0.000	N/A

ELECTRICAL															
Model	System Circuit Volts			Ph	Frq	Rated Load Amps	Min Cir Amps	Max OCP Amps	Watts	Wires	NEMA Plug	Amps Lights	Amps Fans	Amps Anti-Sweats	Amps Misc/Refrig/Heat
FLP10WRC.5589.7716	Remote (R744 T)	Circuit #1	110-120	1	60	2.05	15	15	199	2+G	Leads Single		1.40	0.65	N/A

REFRIGERATION													
Model	Zone	Section	System	Envt	REMOTE REFRIGERATION					GLYCOL / R744 REFRIGERATION			
					SST (°F)	Conv. Rack BTUH	Para. Rack BTUH	Defrost Interval (Hrs)	Defrost Duration	Total GPM	Pressure Drop (psi)	Concent (%)	Liquid Temp (°F)
FLP10WRC.5589.7716	All	Main	Remote-R744 TRANSCRITICAL	Type I	26	8,843	8,188	3.00	25.00	N/A	N/A	N/A	N/A

INTENDED ENVIRONMENT	
Type I - Designed to operate in ambient conditions of 75°F with 55% relative humidity unless noted otherwise under Envt above.	

IMPORTANT NOTES
1) Units must be leveled during installation to ensure the unit is level and plumb.

WARMEST AVERAGE PRODUCT TEMP & INTENDED USE OF ZONES		
Zone	Temp (°F)	Intended Use
1	38	Floral products

REGULATORY	
All Models	Accordance with AHRI Std 1200 ETL Listed to UL 471 ETL Listed to CAN/CSA 22.2 No. 120



In Accordance with
AHRI Std 1200

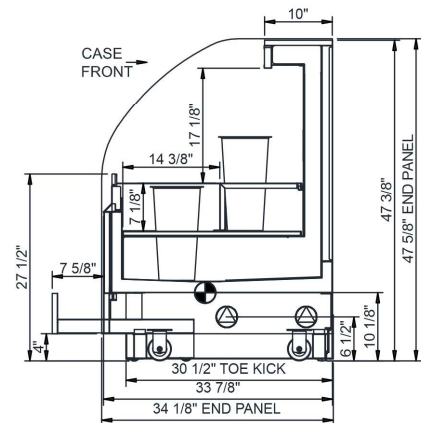
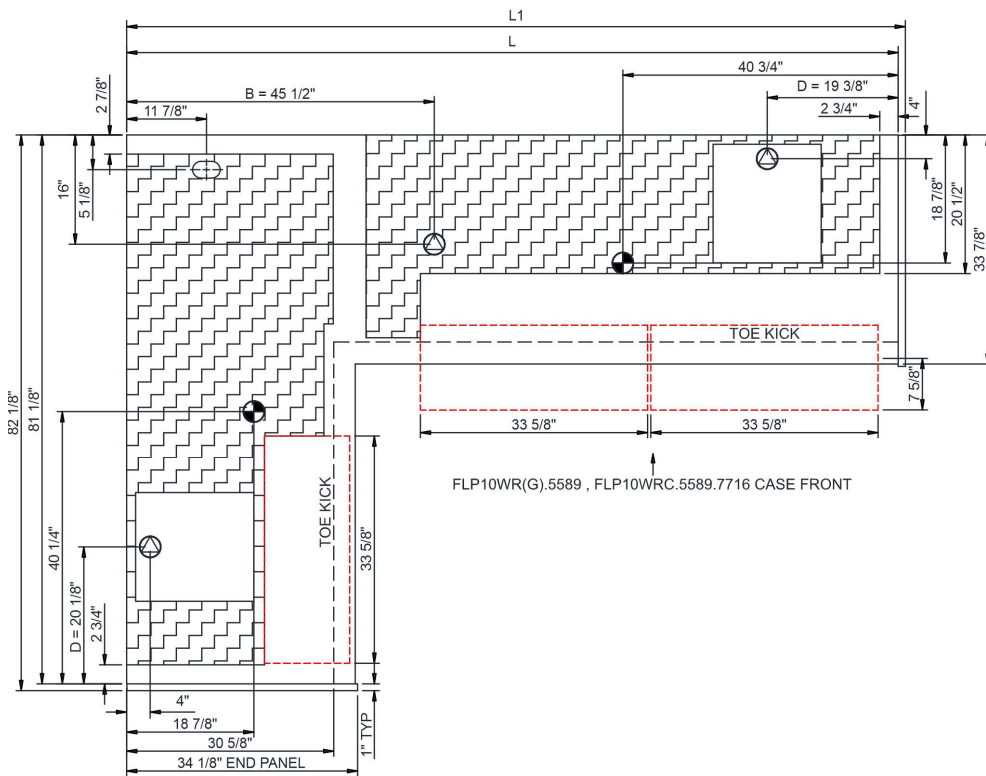
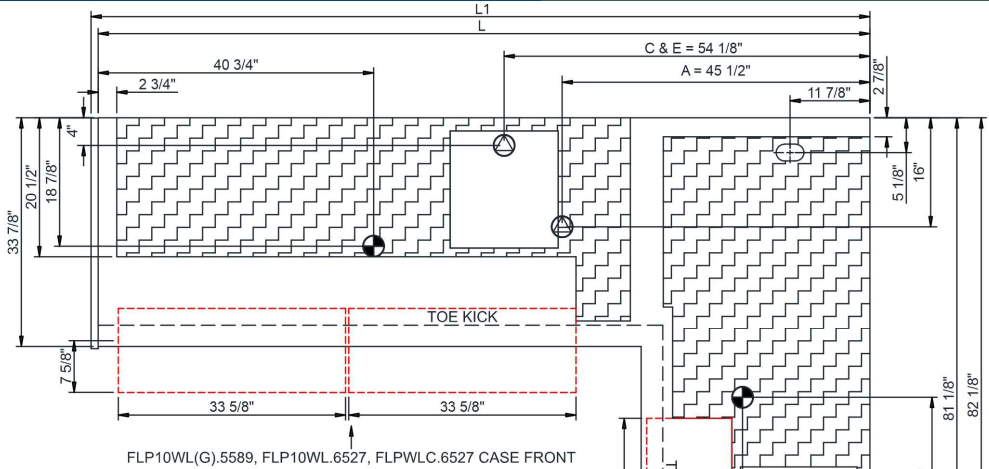
Technical Information

Allure - FLP Straight Inside Wrap Open Low Profile LH or RH Case - Remote CO2

Structural Concepts®

DELIVERING FRESH. ALWAYS.™

	MODEL	CONTROLLER
A	FLP10WL(G).5589	N/A
B	FLP10WR(G).5589	N/A
C	FLP10WL.6527	Dixell XM679
D	FLP10WRC.5589.7716	DANFOSS AK-CC55
E	FLP10WLC.6527	Dixell XM670



NOTE: ALL DIMENSIONS APPROXIMATE

⊗ ELECTRICAL JUNCTION BOX (SUPPLIED WITH 6" LEADS OR POWER CORD).
 ○ LOCATION OF DRAIN TUBE FOR REMOTE REF. ONLY (SUPPLIED WITH 3/4" OR 1 1/2" PVC TUBE).

⊕ REFRIGERATION LINE CONNECTION.
 □ REMOTE FLOOR SINK & UTILITIES ACCESS AREA.

▨ SELF-CONTAINED CASE SERVICE ACCESS AREA.
 ⊞ DRY CASE SERVICE ACCESS AREA.