

• **FLP10WRC.5589.7716** 115-1/4"L x 34-1/8"D x 47-5/8"H

Included

- Remote CO2 refrigeration



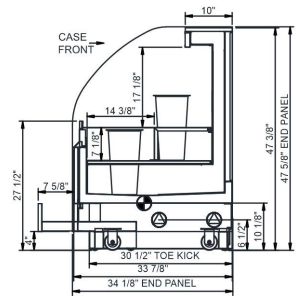
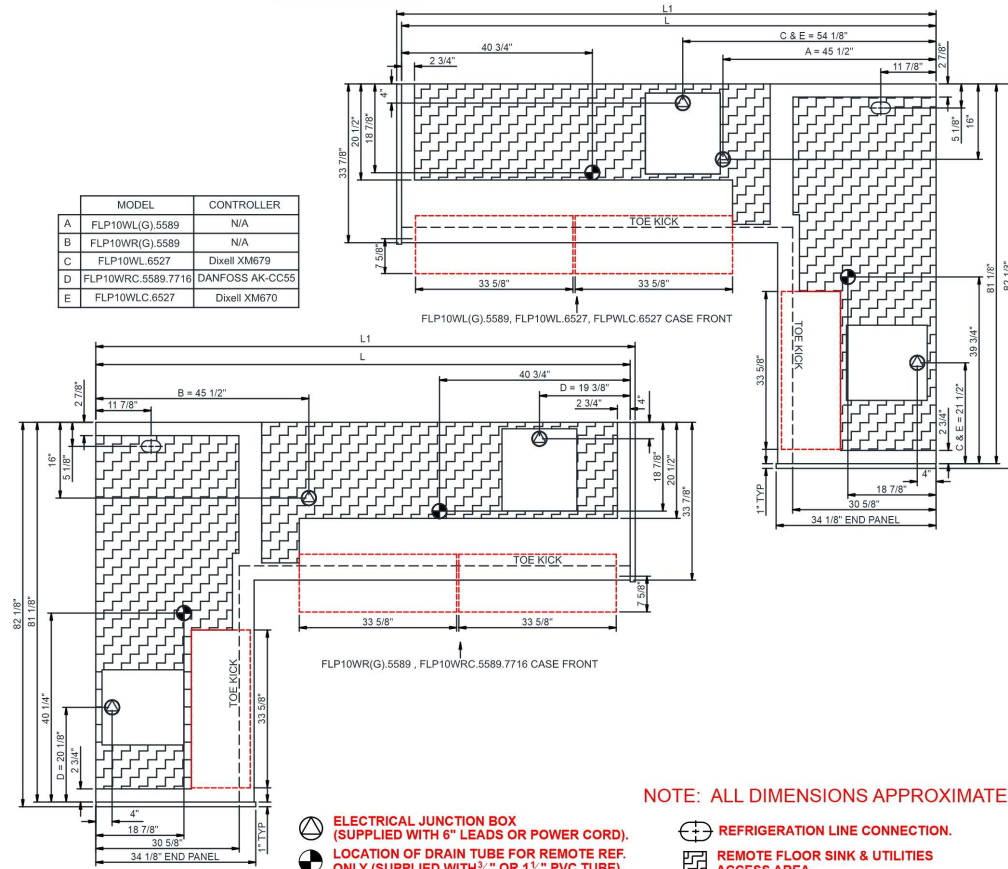
FLP10W(R/L)(x).5589

Specify	Standard Features	Additional Options
EXTERIOR COLOR	• Laminated (Kensington Maple)	• Laminated (Portico Teak)
INTERIOR COLOR	• Bronze Pearlescent	• Pearl Mouse Gray
BASE SUPPORT	• Casters w/ levelers	
END PANELS	• Cutaway w/ glass	• Full with mirror
FRONT	• Open reach-in front	
LWR ROW PULL-OUT DRWS	• Laminated (Kensington Maple)	• Laminated (Portico Teak)
REAR	• Solid back panel, black	
BUCKETS	• 8-1/2"Dia x 13"H Marco buckets	
SHELVING	• 13" bucket support shelves (3 levels)	
ELECTRICAL ACCESS	• Front electrical access	
ELECTRICAL CONNECTION	• Leads	
REFRIGERATION	• Remote CO2 refrigeration (specify type) w/ Danfoss controller	

Intended Environment: Type I - Designed to operate in ambient conditions of 75°F with 55% relative humidity unless noted otherwise in system information below.		
Zone	Intended Product To Be Displayed	Warmest Avg Prod Temp ° F
1	Floral products	38

PLAN VIEW

SIDE VIEW



NOTE: ALL DIMENSIONS APPROXIMATE

Model Technical Specifications																
Model	L"	L1"	L2"	System Circuit Volts		Phs	Freq	Amps ***	Watts	Wires	NEMA Plug	SST	Conv. Rack BTUH	Para. Rack BTUH	Est Wt	
FLP10WRC.5589.7716	N/A	115.25	.00	Remote (R744 TRANSCF	Circuit #1	110-120	1	60	2.05	199	2+G	Leads Single		8843	8188	N/A

*** Does not include electric defrost on freezer models.

Regulatory Approvals:

All Models: Accordance with AHRI Std 1200
ETL Listed to UL 471
ETL Listed to CAN/CSA 22.2 No. 120

In Accordance with **AHRI Std 1200**

DOE 2017 Energy Efficiency Compliant

Important Notes:

- Units must be leveled during installation to ensure the unit is level and plumb.
- ⚠ WARNING:** This product can expose you to chemicals, including Urethane (Ethyl Carbamate), which are known to the State of California to cause cancer and birth defects or other reproductive harm. For more information go to www.P65Warnings.ca.gov.