

DIMENSIONS / SHIPPING				
Model	L"	L1"	L2"	Est Wt (lbs)
FC2DRG.5969L	N/A	50.750	24.250	N/A
FC3DRG.5969L	N/A	74.250	36.000	N/A
FC4DRG.5969L	N/A	98.250	48.000	N/A

ELECTRICAL															
Model	System Circuit Volts			Ph	Frq	Rated Load Amps	Min Cir Amps	Max OCP Amps	Watts	Wires	NEMA Plug	Amps Lights	Amps Fans	Amps Anti-Sweats	Amps Misc/Refrig/Heat
FC2DRG.5969L	Remote (GLYCOL)	Circuit #1	110-120	1	60	1.30	15	15	45	2+G	Leads Single	0.70	0.60		N/A
FC3DRG.5969L	Remote (GLYCOL)	Circuit #1	110-120	1	60	1.60	15	15	68	2+G	Leads Single	0.70	0.90		N/A
FC4DRG.5969L	Remote (GLYCOL)	Circuit #1	110-120	1	60	1.90	15	15	89	2+G	Leads Single	0.70	1.20		N/A

REFRIGERATION														
Model	Zone	Section	System	Envt	REMOTE REFRIGERATION					GLYCOL / R744 REFRIGERATION				
					SST (°F)	Conv. Rack BTUH	Para. Rack BTUH	Defrost Interval (Hrs)	Defrost Duration	Total GPM	Pressure Drop (psi)	Concent (%)	Liquid Temp (°F)	
FC2DRG.5969L	All	Main	Remote-Glycol	Type I	N/A	3,974	3,680	4.00	45.00	2.00	6.18	35%	26.00	
FC3DRG.5969L	All	Main	Remote-Glycol	Type I	N/A	5,664	5,245	4.00	45.00	1.50	2.40	35%	26.00	
FC4DRG.5969L	All	Main	Remote-Glycol	Type I	N/A	9,094	8,420	4.00	30.00	3.30	6.20	35%	26.00	

INTENDED ENVIRONMENT	
Type I - Designed to operate in ambient conditions of 75°F with 55% relative humidity unless noted otherwise under Envt above.	

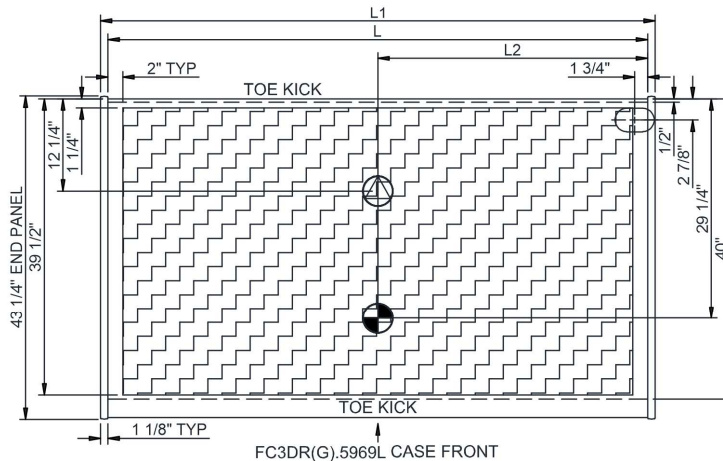
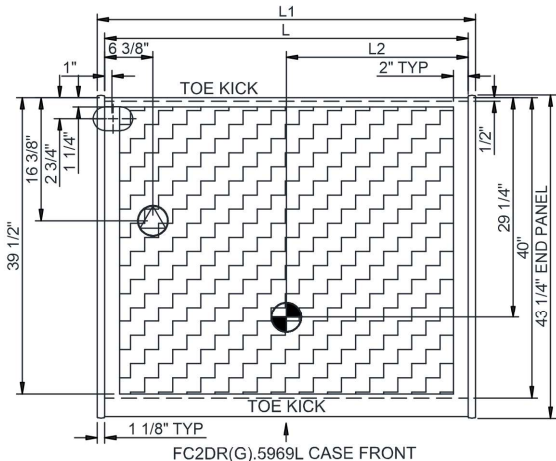
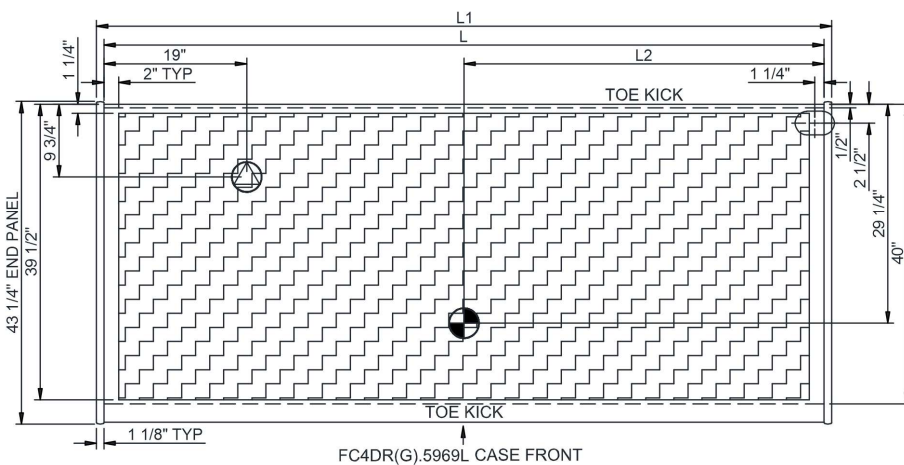
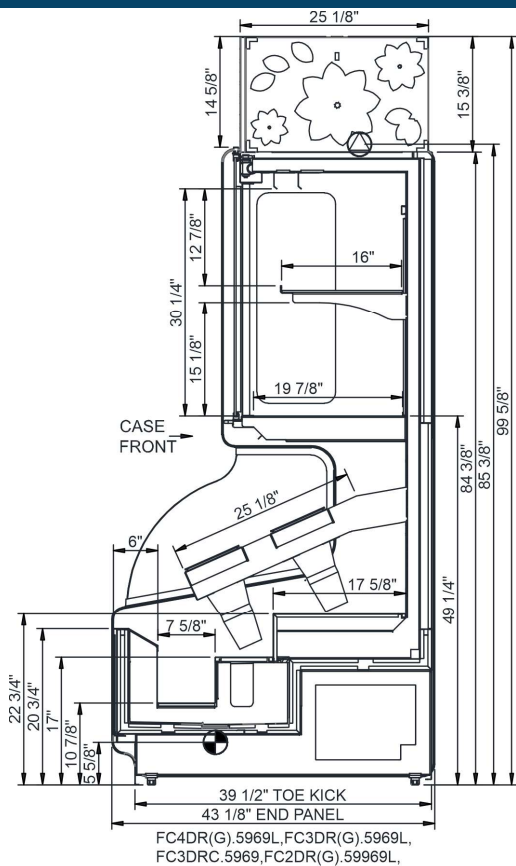
WARMEST AVERAGE PRODUCT TEMP & INTENDED USE OF ZONES		
Zone	Temp (°F)	Intended Use
1	38	Floral products

REGULATORY	
All Models	Accordance with AHRI Std 1200 ETL Listed to UL 471 ETL Listed to CAN/CSA 22.2 No. 120

IMPORTANT NOTES



In Accordance with
AHRI Std 1200



NOTE: ALL DIMENSIONS APPROXIMATE

⊗ ELECTRICAL JUNCTION BOX (SUPPLIED WITH 6\"/>

⊙ LOCATION OF DRAIN TUBE FOR REMOTE REF. ONLY (SUPPLIED WITH 3/4\"/>

⊕ REFRIGERATION LINE CONNECTION.

⊞ REMOTE FLOOR SINK & UTILITIES ACCESS AREA.

⊞ SELF-CONTAINED CASE SERVICE ACCESS AREA.

⊞ DRY CASE SERVICE ACCESS AREA.