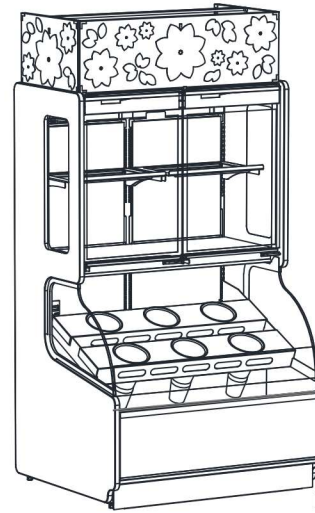


- **FC2DRG.5969L**      50-3/4"L x 43-1/8"D x 99-5/8"H
- **FC3DRG.5969L**      74-1/4"L x 43-1/8"D x 99-5/8"H
- **FC4DRG.5969L**      98-1/4"L x 43-1/8"D x 99-5/8"H



**FC2DR(x).(x)**

### Included

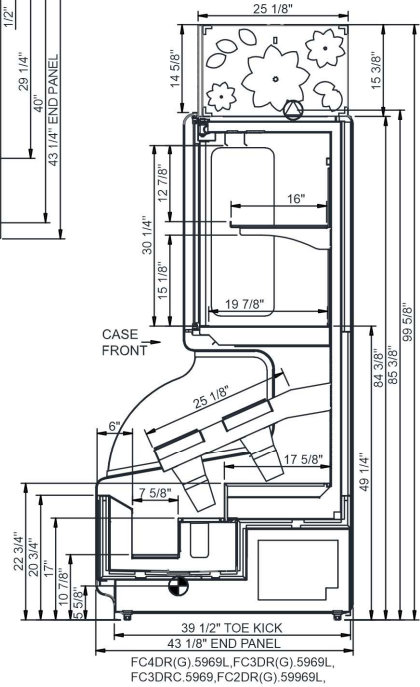
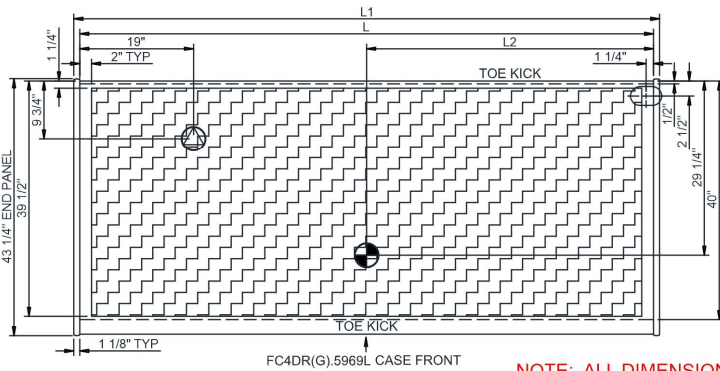
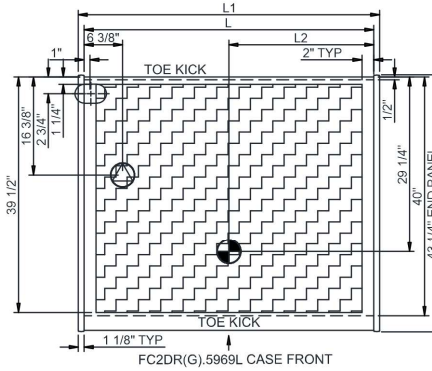
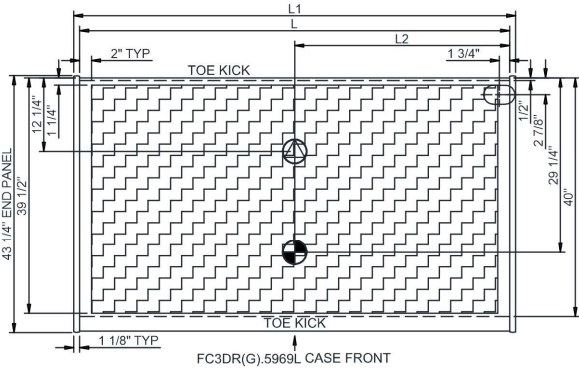
- One year parts & labor warranty
- Remote Glycol refrigeration

Specify	Standard Features	Additional Options
<b>EXTERIOR COLOR</b>	• Powder coated Silversan Black	• Bronze Pearlescent
<b>INTERIOR COLOR</b>	• Powder coated Silversan Black	• Bronze Pearlescent
<b>BASE SUPPORT</b>	• Levelers	
<b>END PANELS</b>	• Cutaway w/ glass	• Full with mirror
<b>FRONT PANEL</b>	• Non-glass front panel (laminated)	• Non-glass front panel (painted)
<b>HEADER</b>	• Decorative header	
<b>LOWER FRONT PANEL</b>	• Powder coated Silversan Black	• Bronze Pearlescent
<b>UPPER REAR</b>	• Solid back panel, mirror	
<b>LOWER DISPLAY</b>	• 13" buckets	
<b>UPPER DISPLAY</b>	• Clear glass shelves, non-lighted	
<b>LIGHTS</b>	• LED top light(s)	
<b>ELECTRICAL ACCESS</b>	• Top electrical access	
<b>REFRIGERATION</b>	• Remote Glycol refrigeration	

<b>Intended Environment:</b> Type I - Designed to operate in ambient conditions of 75°F with 55% relative humidity unless noted otherwise in system information below.		
<b>Zone</b>	<b>Intended Product To Be Displayed</b>	<b>Warmest Avg Prod Temp ° F</b>
1	Floral products	38

### PLAN VIEW

### SIDE VIEW



**NOTE: ALL DIMENSIONS APPROXIMATE**

- ELECTRICAL JUNCTION BOX (SUPPLIED WITH 6\"/>**
- LOCATION OF DRAIN TUBE FOR REMOTE REF. ONLY (SUPPLIED WITH 3/4\"/>**

- REFRIGERATION LINE CONNECTION.**
- REMOTE FLOOR SINK & UTILITIES ACCESS AREA.**

- SELF-CONTAINED CASE SERVICE ACCESS AREA.**
- DRY CASE SERVICE ACCESS AREA.**

#### Model Technical Specifications

Model	L"	L1"	L2"	System Circuit Volts		Phs	Freq	Amps ***	Watts	Wires	NEMA Plug	SST	Conv. Rack BTUH	Para. Rack BTUH	Est Wt	
FC2DRG.5969L	N/A	50.75	24.25	Remote (GLYCOL 35%)	Circuit #1	110-120	1	60	1.30	45	2+G	Leads Single	26.00	3974	3680	N/A
FC3DRG.5969L	N/A	74.25	36.00	Remote (GLYCOL 35%)	Circuit #1	110-120	1	60	1.60	68	2+G	Leads Single	26.00	5664	5245	N/A
FC4DRG.5969L	N/A	98.25	48.00	Remote (GLYCOL 35%)	Circuit #1	110-120	1	60	1.90	89	2+G	Leads Single	26.00	9094	8420	N/A

\*\*\* Does not include electric defrost on freezer models.

#### Regulatory Approvals:

All Models  
 Accordance with AHRI Std 1200  
 ETL Listed to UL 471  
 ETL Listed to CAN/CSA 22.2 No. 120



In Accordance with  
**AHRI Std 1200**

**DOE 2017**  
Energy Efficiency  
Compliant

#### Important Notes:

**⚠ WARNING:** This product can expose you to chemicals, including Urethane (Ethyl Carbamate), which are known to the State of California to cause cancer and birth defects or other reproductive harm. For most information go to [www.P65Warnings.ca.gov](http://www.P65Warnings.ca.gov).