

Technical Information

Allure - FC2DRC Doored Combination Case - CO2 w/ Controller

Structural Concepts®

DELIVERING FRESH. ALWAYS.™

DIMENSIONS / SHIPPING				
Model	L"	L1"	L2"	Est Wt (lbs)
FC2DRC.5969.6527	N/A	50.625	24.250	N/A
FC3DRC.5969.6527	N/A	74.000	36.000	N/A
FC4DRC.5969.6527	N/A	98.000	48.000	N/A

ELECTRICAL															
Model	System Circuit Volts			Ph	Frq	Rated Load Amps	Min Cir Amps	Max OCP Amps	Watts	Wires	NEMA Plug	Amps Lights	Amps Fans	Amps Anti-Sweats	Amps Misc/Refrig/Heat
FC2DRC.5969.6527	Remote (R744 L)	Circuit #1	110-120	1	60	1.38	15	15	66	2+G	Leads Single	0.70	0.60		0.08
FC3DRC.5969.6527	Remote (R744 L)	Circuit #1	110-120	1	60	1.68	15	15	78	2+G	Leads Single	0.70	0.90		0.08
FC4DRC.5969.6527	CONTACT FACTORY FOR UPDATED INFORMATION														

REFRIGERATION													
Model	Zone	Section	System	Envt	REMOTE REFRIGERATION					GLYCOL / R744 REFRIGERATION			
					SST (°F)	Conv. Rack BTUH	Para. Rack BTUH	Defrost Interval (Hrs)	Defrost Duration	Total GPM	Pressure Drop (psi)	Concent (%)	Liquid Temp (°F)
FC2DRC.5969.6527	All	Main	Remote-R744 LIQ OVERFEED	Type I		3,974	3,680	4.00	30.00	0.38	0.82	N/A	26.00
FC3DRC.5969.6527	All	Main	Remote-R744 LIQ OVERFEED	Type I		5,664	5,245	4.00	30.00	0.61	0.42	N/A	26.00
FC4DRC.5969.6527	CONTACT FACTORY FOR UPDATED INFORMATION												

INTENDED ENVIRONMENT	
Type I - Designed to operate in ambient conditions of 75°F with 55% relative humidity unless noted otherwise under Envt above.	

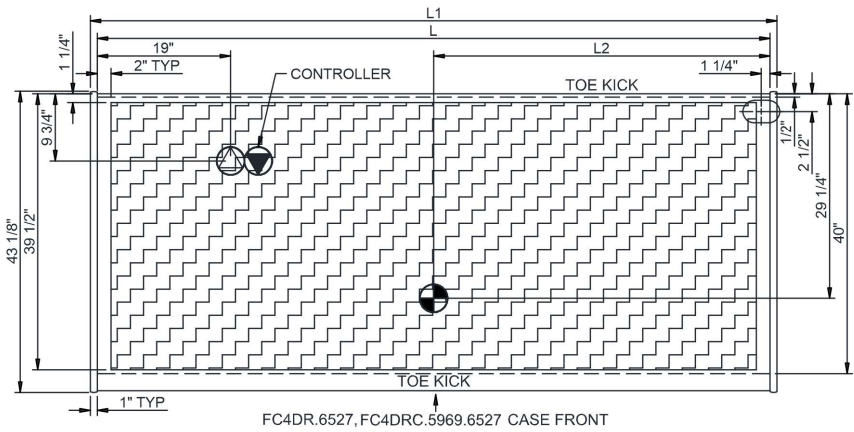
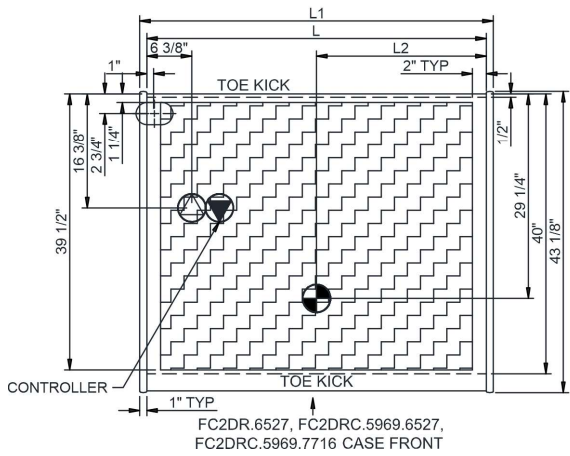
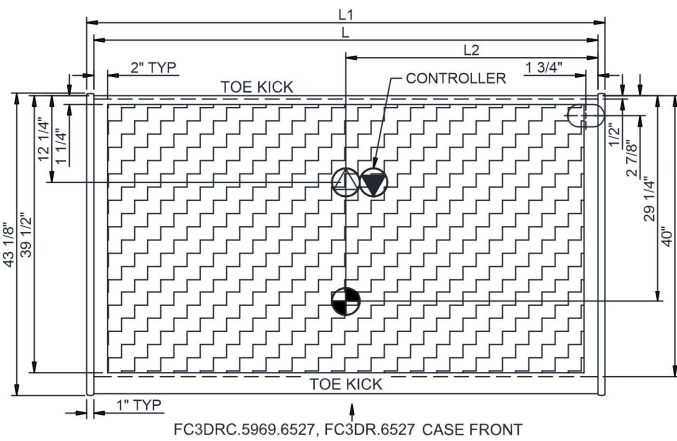
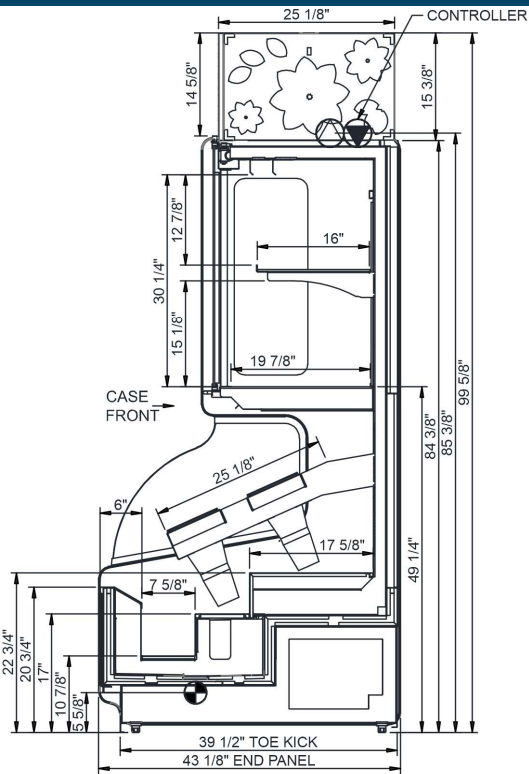
WARMEST AVERAGE PRODUCT TEMP & INTENDED USE OF ZONES		
Zone	Temp (°F)	Intended Use
1	38	Floral products

REGULATORY	
All Models	Accordance with AHRI Std 1200 ETL Listed to UL 471 ETL Listed to CAN/CSA 22.2 No. 120

IMPORTANT NOTES



In Accordance with
AHRI Std 1200



NOTE: ALL DIMENSIONS APPROXIMATE

⊗ ELECTRICAL JUNCTION BOX (SUPPLIED WITH 6" LEADS OR POWER CORD).
 ⊙ LOCATION OF DRAIN TUBE FOR REMOTE REF. ONLY (SUPPLIED WITH 3/4" OR 1 1/2" PVC TUBE).

⊕ REFRIGERATION LINE CONNECTION.
 ⊞ REMOTE FLOOR SINK & UTILITIES ACCESS AREA.

⊞ SELF-CONTAINED CASE SERVICE ACCESS AREA.
 ⊞ DRY CASE SERVICE ACCESS AREA.