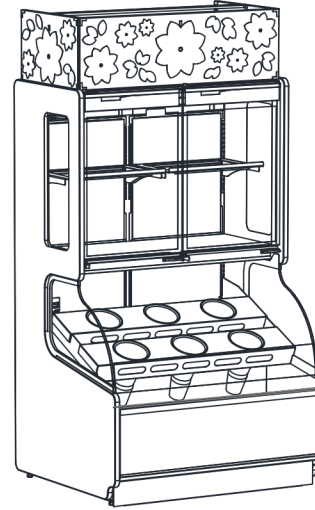


- **FC2DRC.5969.6527** 50-5/8"L x 43-1/8"D x 99-5/8"H
- **FC3DRC.5969.6527** 74"L x 43-1/8"D x 99-5/8"H

Included

- One year parts & labor warranty
- Remote CO2 refrigeration

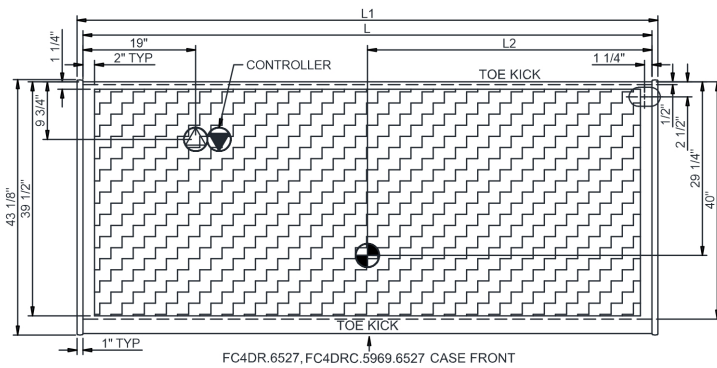
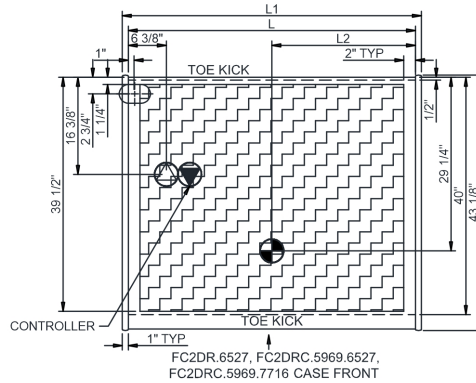
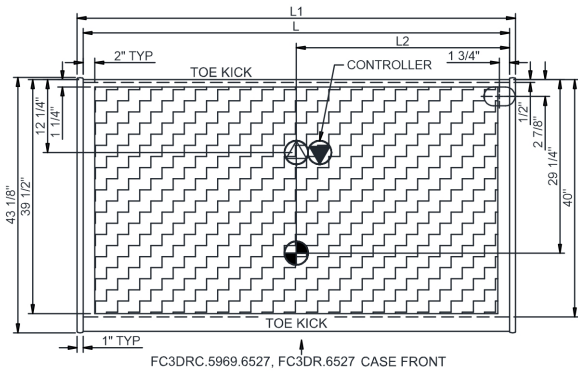


FC2DR(x).(x)

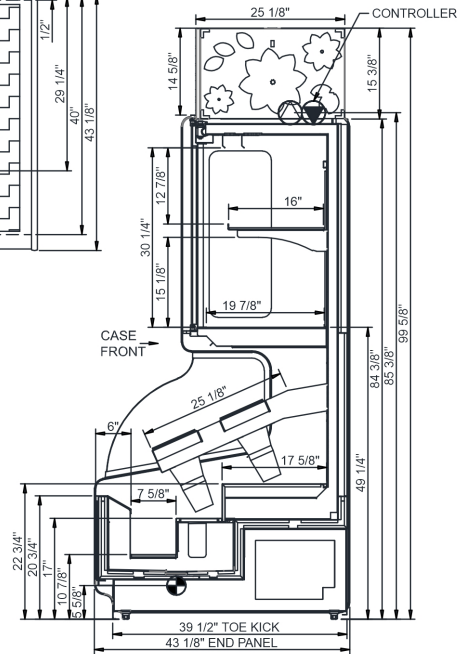
Specify	Standard Features	Additional Options
EXTERIOR COLOR	• Powder coated Silversan Black	• Bronze Pearlescent
INTERIOR COLOR	• Powder coated Silversan Black	• Bronze Pearlescent
BASE SUPPORT	• Levelers	
END PANELS	• Cutaway w/ glass	• Full with mirror
FRONT PANEL	• Non-glass front panel (laminated)	• Non-glass front panel (painted)
HEADER	• Decorative header	
LOWER FRONT PANEL	• Powder coated Silversan Black	• Bronze Pearlescent
UPPER REAR	• Solid back panel, mirror	
LOWER DISPLAY	• 13" buckets	
UPPER DISPLAY	• Clear glass shelves, non-lighted	
LIGHTS	• LED top light(s)	
ELECTRICAL ACCESS	• Top electrical access	
REFRIGERATION	• Remote CO2 refrigeration (specify type) w/ controller	

Intended Environment: Type I - Designed to operate in ambient conditions of 75°F with 55% relative humidity unless noted otherwise in system information below.		
Zone	Intended Product To Be Displayed	Warmest Avg Prod Temp ° F
1	Floral products	38

PLAN VIEW



SIDE VIEW



NOTE: ALL DIMENSIONS APPROXIMATE

- ELECTRICAL JUNCTION BOX (SUPPLIED WITH 6" LEADS OR POWER CORD).
- LOCATION OF DRAIN TUBE FOR REMOTE REF. ONLY (SUPPLIED WITH 3/4" OR 1 1/2" PVC TUBE).

- REFRIGERATION LINE CONNECTION.
- REMOTE FLOOR SINK & UTILITIES ACCESS AREA.

- SELF-CONTAINED CASE SERVICE ACCESS AREA.
- DRY CASE SERVICE ACCESS AREA.

Model Technical Specifications																
Model	L"	L1"	L2"	System Circuit Volts			Phs	Freq	Amps ***	Watts	Wires	NEMA Plug	SST	Conv. Rack BTUH	Para. Rack RTI/H	Est Wt
FC2DRC.5969.6527	N/A	50.63	24.25	Remote (R744 LIQ OVERFE	Circuit #1	110-120	1	60	1.38	66	2+G	Leads Single		3974	3680	N/A
FC3DRC.5969.6527	N/A	74.00	36.00	Remote (R744 LIQ OVERFE	Circuit #1	110-120	1	60	1.68	78	2+G	Leads Single		5664	5245	N/A

*** Does not include electric defrost on freezer models.

Regulatory Approvals:	
All Models	Accordance with AHRI Std 1200 ETL Listed to UL 471 ETL Listed to CAN/CSA 22.2 No. 120



In Accordance with
AHRI Std 1200

DOE 2017
Energy Efficiency
Compliant

Important Notes:

⚠ WARNING: This product can expose you to chemicals, including Urethane (Ethyl Carbamate), which are known to the State of California to cause cancer and birth defects or other reproductive harm. For more information go to www.P65Warnings.ca.gov.