

Technical Information

Allure - FC2DRC Doored Combination Case - Remote CO2 w/ Danfoss Controller

Structural Concepts®

DELIVERING FRESH. ALWAYS.™

| DIMENSIONS / SHIPPING | | | | |
|-----------------------|-----|--------|--------|--------------|
| Model | L" | L1" | L2" | Est Wt (lbs) |
| FC2DRC.5969.7716 | N/A | 50.625 | 24.250 | N/A |
| FC3DRC.5969.7716 | N/A | 74.000 | 36.000 | N/A |
| FC4DRC.5969.7716 | N/A | 98.000 | 48.000 | N/A |

| ELECTRICAL | | | | | | | | | | | | | | | |
|------------------|---|------------|---------|----|-----|-----------------|--------------|--------------|-------|-------|----------------|-------------|-----------|------------------|-----------------------|
| Model | System Circuit Volts | | | Ph | Frq | Rated Load Amps | Min Cir Amps | Max OCP Amps | Watts | Wires | NEMA Plug | Amps Lights | Amps Fans | Amps Anti-Sweats | Amps Misc/Refrig/Heat |
| FC2DRC.5969.7716 | Remote (R744 T) | Circuit #1 | 110-120 | 1 | 60 | 1.30 | 15 | 15 | 45 | 2+G | Leads Single | 0.70 | 0.60 | | N/A |
| FC3DRC.5969.7716 | Remote (R744 T) | Circuit #1 | 110-120 | 1 | 60 | 1.63 | 15 | 15 | 89 | 2+G | Leads Multiple | 0.70 | 0.93 | | N/A |
| FC4DRC.5969.7716 | CONTACT FACTORY FOR UPDATED INFORMATION | | | | | | | | | | | | | | |

| REFRIGERATION | | | | | | | | | | | | | |
|------------------|---|--------------|---------------------------|--------|----------------------|-----------------|-----------------|------------------------|------------------|-----------------------------|---------------------|-------------|------------------|
| Model | Zone | Section | System | Envt | REMOTE REFRIGERATION | | | | | GLYCOL / R744 REFRIGERATION | | | |
| | | | | | SST (°F) | Conv. Rack BTUH | Para. Rack BTUH | Defrost Interval (Hrs) | Defrost Duration | Total GPM | Pressure Drop (psi) | Concent (%) | Liquid Temp (°F) |
| FC2DRC.5969.7716 | All | Refrigerator | Remote-R744 TRANSCRITICAL | Type I | 26 | 3,974 | 3,680 | 4.00 | 30.00 | N/A | N/A | N/A | N/A |
| FC3DRC.5969.7716 | All | Main | Remote-R744 TRANSCRITICAL | Type I | 26 | 5,664 | 5,245 | 4.00 | 30.00 | N/A | N/A | N/A | N/A |
| FC4DRC.5969.7716 | CONTACT FACTORY FOR UPDATED INFORMATION | | | | | | | | | | | | |

| INTENDED ENVIRONMENT | |
|--|--|
| Type I - Designed to operate in ambient conditions of 75°F with 55% relative humidity unless noted otherwise under Envt above. | |

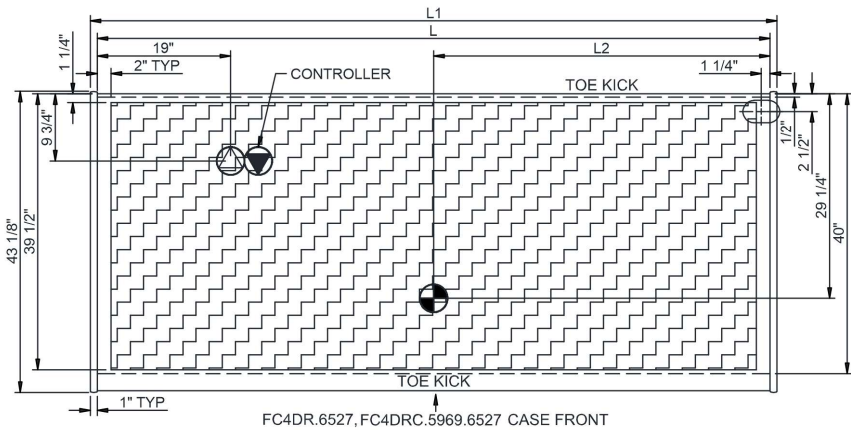
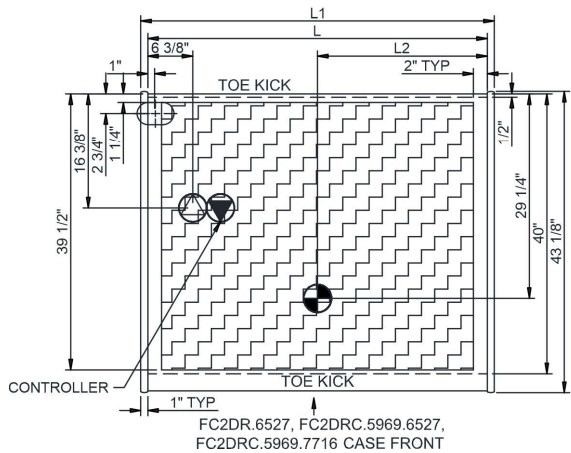
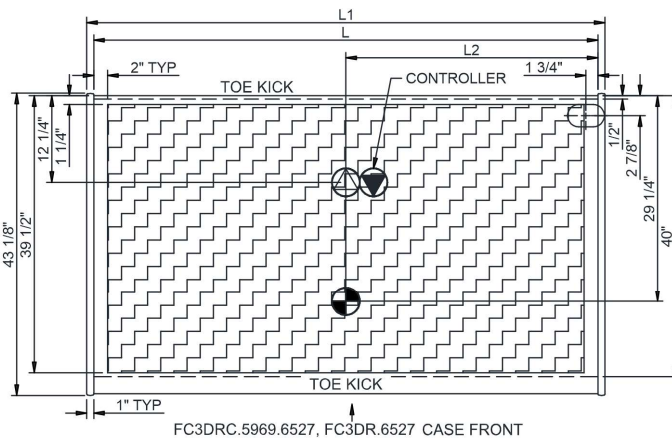
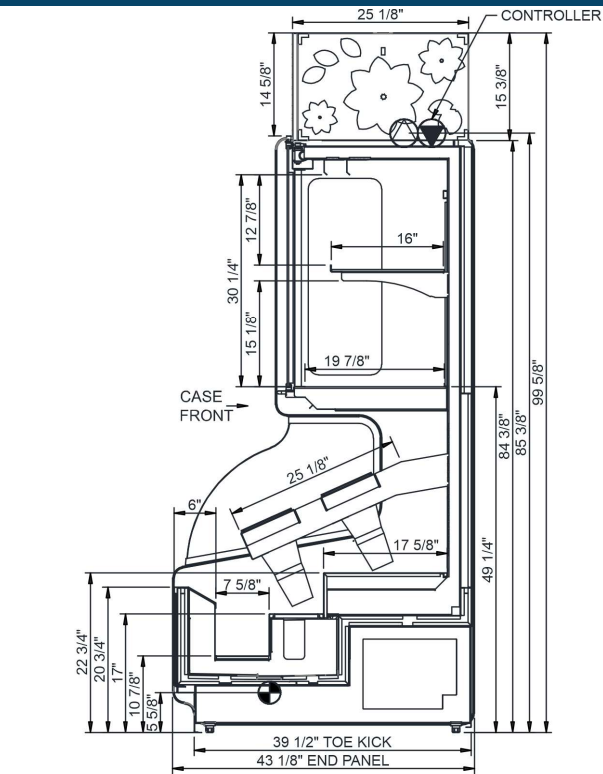
| WARMEST AVERAGE PRODUCT TEMP & INTENDED USE OF ZONES | | |
|--|-----------|-----------------|
| Zone | Temp (°F) | Intended Use |
| 1 | 38 | Floral products |

| REGULATORY | |
|------------|---|
| All Models | Accordance with AHRI Std 1200 ETL Listed to UL 471 ETL Listed to CAN/CSA 22.2 No. 120 |

IMPORTANT NOTES



In Accordance with
AHRI Std 1200



NOTE: ALL DIMENSIONS APPROXIMATE

⊗ ELECTRICAL JUNCTION BOX (SUPPLIED WITH 6" LEADS OR POWER CORD).
⊙ LOCATION OF DRAIN TUBE FOR REMOTE REF. ONLY (SUPPLIED WITH 3/4" OR 1 1/2" PVC TUBE).

⊕ REFRIGERATION LINE CONNECTION.
⊞ REMOTE FLOOR SINK & UTILITIES ACCESS AREA.

⊞ SELF-CONTAINED CASE SERVICE ACCESS AREA.
⊞ DRY CASE SERVICE ACCESS AREA.