

# Technical Information

Allure - FC2DR Doored Combination Case - Remote DX w/ Carel Heos Controller

Structural Concepts®

DELIVERING FRESH. ALWAYS.™

| DIMENSIONS / SHIPPING |     |        |        |              |
|-----------------------|-----|--------|--------|--------------|
| Model                 | L"  | L1"    | L2"    | Est Wt (lbs) |
| FC2DR.5969.8114       | N/A | 50.750 | 24.250 | N/A          |
| FC3DR.5969.8114       | N/A | 74.250 | 36.000 | N/A          |
| FC4DR.5969.8114       | N/A | 98.250 | 48.000 | N/A          |

| ELECTRICAL      |   |            |         |    |     |                 |              |              |       |       |              |             |           |                  |                       |
|-----------------|---|------------|---------|----|-----|-----------------|--------------|--------------|-------|-------|--------------|-------------|-----------|------------------|-----------------------|
| Model           | System Circuit Volts                    |            |         | Ph | Frq | Rated Load Amps | Min Cir Amps | Max OCP Amps | Watts | Wires | NEMA Plug    | Amps Lights | Amps Fans | Amps Anti-Sweats | Amps Misc/Refrig/Heat |
| FC2DR.5969.8114 | Remote (DX)                             | Circuit #1 | 110-120 | 1  | 60  | 1.32            | 15           | 15           | 48    | 2+G   | Leads Single | 0.70        | 0.62      |                  | N/A                   |
| FC3DR.5969.8114 | CONTACT FACTORY FOR UPDATED INFORMATION |            |         |    |     |                 |              |              |       |       |              |             |           |                  |                       |
| FC4DR.5969.8114 | CONTACT FACTORY FOR UPDATED INFORMATION |            |         |    |     |                 |              |              |       |       |              |             |           |                  |                       |

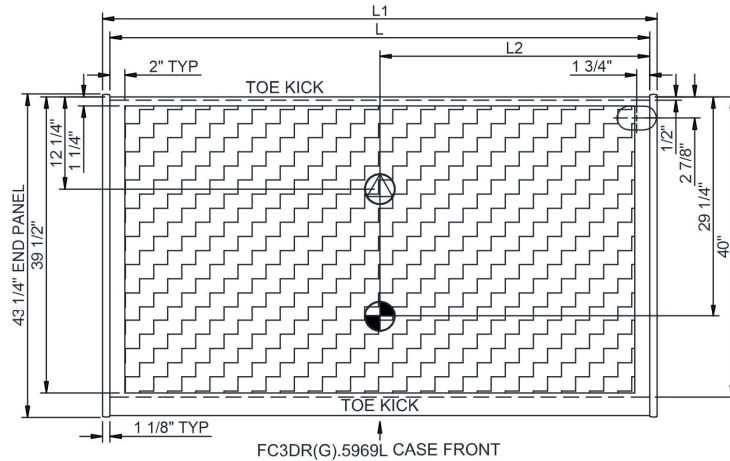
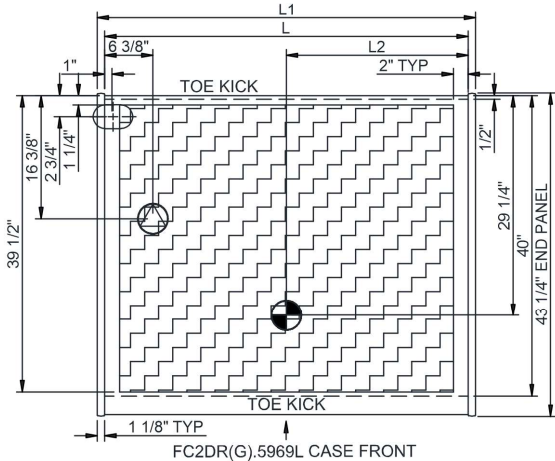
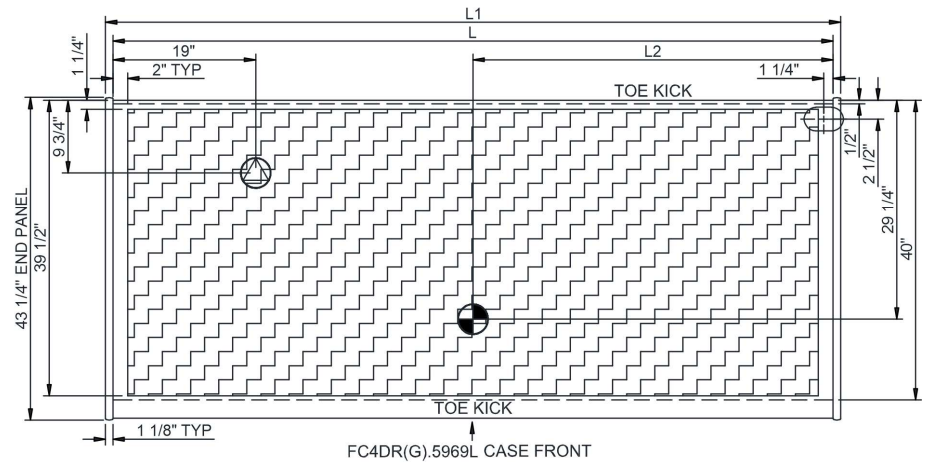
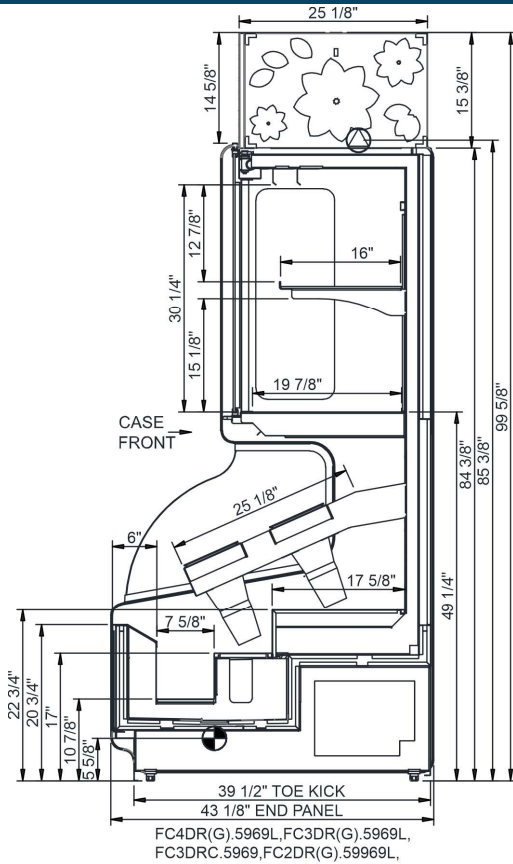
| REFRIGERATION   |   |         |           |        |                      |                 |                 |                        |                  |                             |                     |             |                  |
|-----------------|---|---------|-----------|--------|----------------------|-----------------|-----------------|------------------------|------------------|-----------------------------|---------------------|-------------|------------------|
| Model           | Zone                                    | Section | System    | Envt   | REMOTE REFRIGERATION |                 |                 |                        |                  | GLYCOL / R744 REFRIGERATION |                     |             |                  |
|                 |   |         |           |        | SST (°F)             | Conv. Rack BTUH | Para. Rack BTUH | Defrost Interval (Hrs) | Defrost Duration | Total GPM                   | Pressure Drop (psi) | Concent (%) | Liquid Temp (°F) |
| FC2DR.5969.8114 | All                                     | Main    | Remote-DX | Type I | 26                   | 4,772           | 4,418           | 4.00                   | 30.00            | N/A                         | N/A                 | N/A         | N/A              |
| FC3DR.5969.8114 | CONTACT FACTORY FOR UPDATED INFORMATION |         |           |        |                      |                 |                 |                        |                  |                             |                     |             |                  |
| FC4DR.5969.8114 | CONTACT FACTORY FOR UPDATED INFORMATION |         |           |        |                      |                 |                 |                        |                  |                             |                     |             |                  |

| INTENDED ENVIRONMENT   |           |                 |
|--|-----------|-----------------|
| Type I - Designed to operate in ambient conditions of 75°F with 55% relative humidity unless noted otherwise under Envt above. |           |                 |
| WARMEST AVERAGE PRODUCT TEMP & INTENDED USE OF ZONES   |           |                 |
| Zone   | Temp (°F) | Intended Use    |
| 1  | 38        | Floral products |


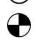
## IMPORTANT NOTES

| REGULATORY |   |
|------------|---|
| All Models | Accordance with AHRI Std 1200<br>ETL Listed to UL 471<br>ETL Listed to CAN/CSA 22.2 No. 120 |





NOTE: ALL DIMENSIONS APPROXIMATE

-  ELECTRICAL JUNCTION BOX (SUPPLIED WITH 6" LEADS OR POWER CORD).
-  REMOTE FLOOR SINK & UTILITIES ACCESS AREA.

-  REFRIGERATION LINE CONNECTION.
-  SELF-CONTAINED CASE SERVICE ACCESS AREA.

-  DRY CASE SERVICE ACCESS AREA.