

DIMENSIONS / SHIPPING				
Model	L"	L1"	L2"	Est Wt (lbs)
FC3DR.6527	N/A	74.000	36.000	N/A
FC4DR.6527	N/A	98.000	48.000	N/A

ELECTRICAL															
Model	System Circuit Volts			Ph	Frq	Rated Load Amps	Min Cir Amps	Max OCP Amps	Watts	Wires	NEMA Plug	Amps Lights	Amps Fans	Amps Anti-Sweats	Amps Misc/Refrig/Heat
FC3DR.6527	Remote (DX)	Circuit #1	110-120	1	60	1.60	15	15	68	2+G	Leads Multiple	0.70	0.90		N/A
FC4DR.6527	Remote (DX)	Circuit #1	110-120	1	60	1.90	15	15	89	2+G	Leads Single	0.70	1.20		N/A

REFRIGERATION													
Model	Zone	Section	System	Envt	REMOTE REFRIGERATION					GLYCOL / R744 REFRIGERATION			
					SST (°F)	Conv. Rack BTUH	Para. Rack BTUH	Defrost Interval (Hrs)	Defrost Duration	Total GPM	Pressure Drop (psi)	Concent (%)	Liquid Temp (°F)
FC3DR.6527	All	Main	Remote-DX	Type I	26	5,664	5,245	4.00	30.00	N/A	N/A	N/A	N/A
FC4DR.6527	All	Main	Remote-DX	Type I	26	9,094	8,420	4.00	30.00	N/A	N/A	N/A	N/A

### INTENDED ENVIRONMENT

Type I - Designed to operate in ambient conditions of 75°F with 55% relative humidity unless noted otherwise under Envt above.

### WARMEST AVERAGE PRODUCT TEMP & INTENDED USE OF ZONES

Zone	Temp (°F)	Intended Use
1	38	Floral products

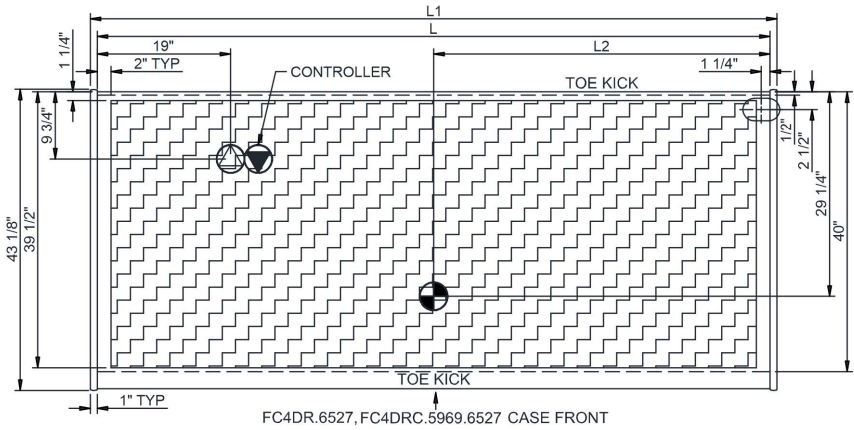
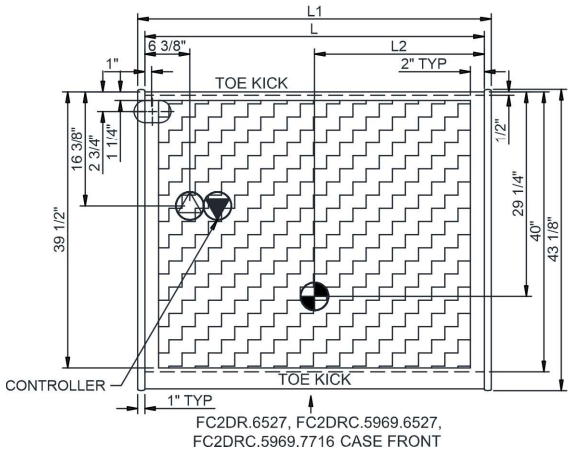
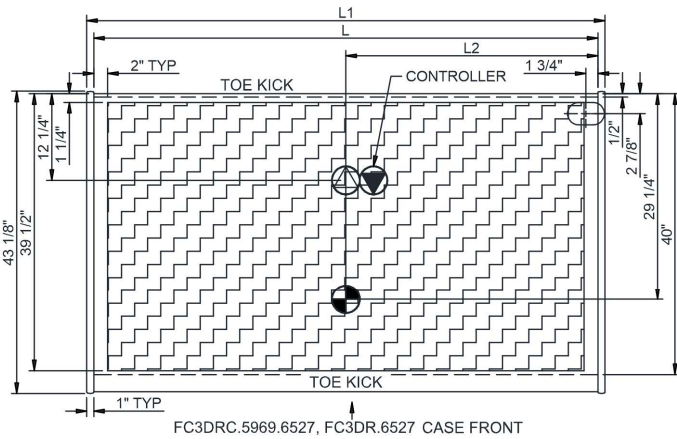
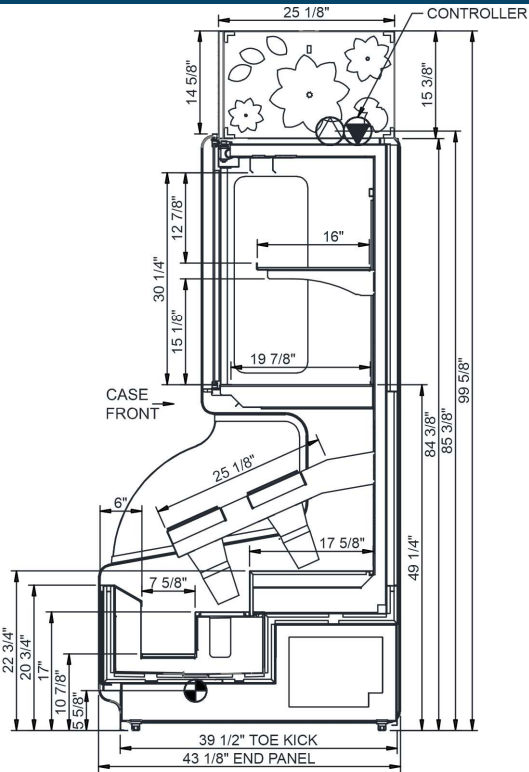
### REGULATORY

All Models	Accordance with AHRI Std 1200 ETL Listed to UL 471 ETL Listed to CAN/CSA 22.2 No. 120
------------	---

### IMPORTANT NOTES



In Accordance with  
**AHRI Std 1200**



NOTE: ALL DIMENSIONS APPROXIMATE

⊗ ELECTRICAL JUNCTION BOX (SUPPLIED WITH 6" LEADS OR POWER CORD).  
 ⊕ LOCATION OF DRAIN TUBE FOR REMOTE REF. ONLY (SUPPLIED WITH 3/4" OR 1 1/2" PVC TUBE).

⊕ REFRIGERATION LINE CONNECTION.  
 ⊕ REMOTE FLOOR SINK & UTILITIES ACCESS AREA.

⊕ SELF-CONTAINED CASE SERVICE ACCESS AREA.  
 ⊕ DRY CASE SERVICE ACCESS AREA.