

- **FC2DR** 50-3/4"L x 43-1/8"D x 87-7/8"H
- **FC3DR** 74-1/4"L x 43-1/8"D x 87-7/8"H

Included

- Levelers
- 8" X 13" Buckets
- Clear glass front swinging doors
- Clear glass shelves
- Digital fahrenheit thermometer
- Non-lighted upper display
- One year parts & labor warranty
- Shelving removable and adjustable on 1" centers



FC2DR

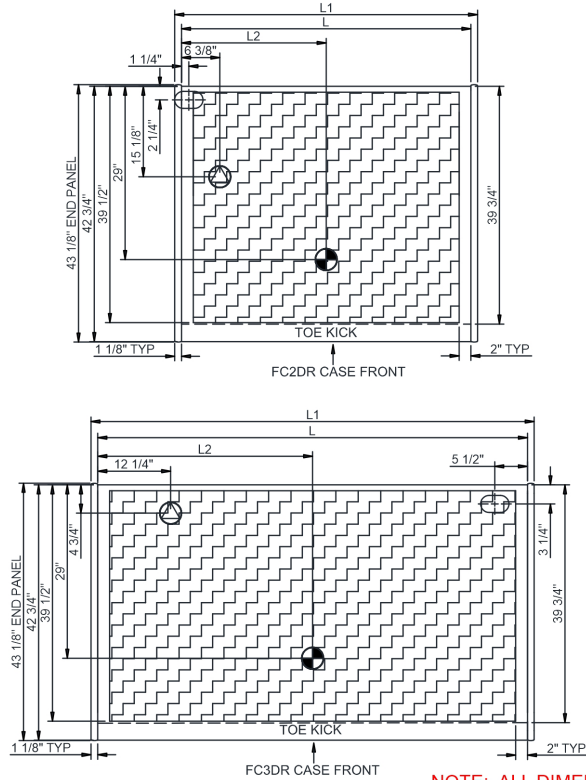
Specify	Standard Features	Additional Options
EXTERIOR COLOR	• Powder coated Silversan Black	• Powder coated (stock/non-stock colors)
INTERIOR COLOR	• Powder coated Silversan Black	• Stainless steel
LOWER FRONT PANEL COLOR	• Powder coated Silversan Black	• Powder coated (stock/non-stock colors)
REAR EXTERIOR COLOR	• Powder coated Silversan Black	• Powder coated (stock/non-stock colors)
END PANELS	• Full end panel	• Cutaway w/ glass
UPPER DOORS	• Glass swinging front doors	
LOWER DISPLAY	¹ • 8" X 13" Buckets	
UPPER DISPLAY	• Clear glass shelves, non-lighted	
ELECTRICAL CONNECTION	• Electrical leads	
REFRIGERATION	² • Remote DX refrigeration	¹ • Remote DX w/thermostat, solenoid & TXV
SENSOR	• None	• CPC discharge air sensor (remote)
MISCELLANEOUS		• Second year parts & labor warranty

Std Notes: 1 - FC2DR = (6), FC3DR = (10)
 2 - Read important notes for remote options

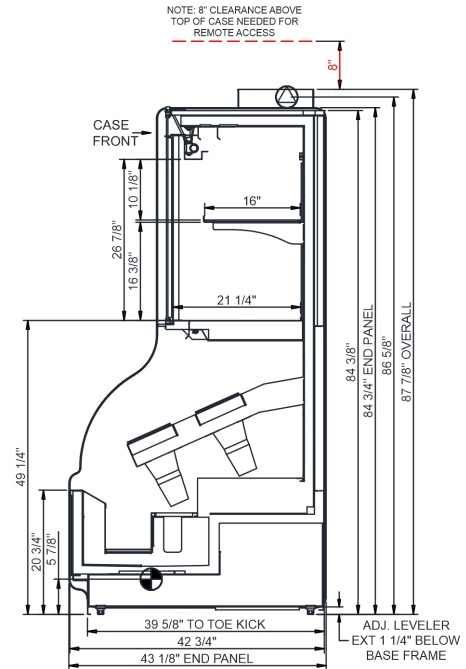
Option Notes: 1 - Read important notes for remote options

Intended Environment: Type I - Designed to operate in ambient conditions of 75°F with 55% relative humidity unless noted otherwise in system information below.		
Zone	Intended Product To Be Displayed	Warmest Avg Prod Temp ° F
1	Floral products	40

PLAN VIEW



SIDE VIEW



NOTE: ALL DIMENSIONS APPROXIMATE

- ELECTRICAL JUNCTION BOX (SUPPLIED WITH 6\"/>
- LOCATION OF DRAIN TUBE FOR REMOTE REF. ONLY (SUPPLIED WITH 3/4\"/>
- REFRIGERATION LINE CONNECTION.
- REMOTE FLOOR SINK & UTILITIES ACCESS AREA.
- SELF-CONTAINED CASE SERVICE ACCESS AREA.
- DRY CASE SERVICE ACCESS AREA.

Model Technical Specifications																
Model	L"	L1"	L2"	System Circuit Volts		Phs	Freq	Amps ***	Watts	Wires	NEMA Plug	SST	Conv. Rack BTUH	Para. Rack BTUH	Est Wt	
FC2DR	48.50	50.75	24.25	Remote (DX)	Circuit #1	110-120	1	60	1.30	47	2+G	Leads Single	26.00	4772	4418	N/A
				Remote (GLYCOL 35%)	Circuit #1	110-120	1	60	1.30	47	2+G	Leads Single	26.00	3974	3680	
				Remote (R744 LIQ OVERFE	Circuit #1	110-120	1	60	1.38	76	2+G	Leads Single		3974	3680	
				Remote (R744 TRANSCRIT	Circuit #1	110-120	1	60	1.30	47	2+G	Leads Single		3974	3680	
FC3DR	72.00	74.25	36.00	Remote (DX)	Circuit #1	110-120	1	60	1.60	71	2+G	Leads Multiple	26.00	5664	5245	N/A
				Remote (GLYCOL 35%)	Circuit #1	110-120	1	60	1.60	71	2+G	Leads Single	26.00	5664	5245	
				Remote (R744 LIQ OVERFE	Circuit #1	110-120	1	60	1.68	81	2+G	Leads Single		5664	5245	
				Remote (R744 TRANSCRIT	Circuit #1	110-120	1	60	1.63	92	2+G	Leads Multiple		5664	5245	

*** Does not include electric defrost on freezer models.

Regulatory Approvals:

All Models	Accordance with AHRI Std 1200 ETL Listed to UL 471 ETL Listed to CAN/CSA 22.2 No. 120
------------	---



Important Notes:

- 1) REMOTE REFRIGERATION NOTE: Condensing unit not included, floor drain required.
- 2) ELECTRICAL NOTE: If GFCI is required, a GFCI breaker MUST be used in lieu of a GFCI receptacle.
- 3) Top electrical access.
- 4) Keep unit at least 15' from exterior doors, 10' from overhead HVAC vents, 5' from exterior windows.
- 5) Units are supplied with levelers which must be adjusted during installation to ensure the unit is level and plumb.
- 6) Performance issues (product temperatures, water on floor, etc) caused by adverse conditions are not covered by warranty.

⚠ WARNING: This product can expose you to chemicals, including Urethane (Ethyl Carbamate), which are known to the State of California to cause cancer and birth defects or other reproductive harm. For more information go to www.P65Warnings.ca.gov.