

Food Bar Island - Refrigerated Self-Service Food Bar Island w/ Lift-up Sneeze Guard - Remote DX w/ Carel Heos Controller

Models

DPI724R.6628.8114

DPI932R.6628.8114



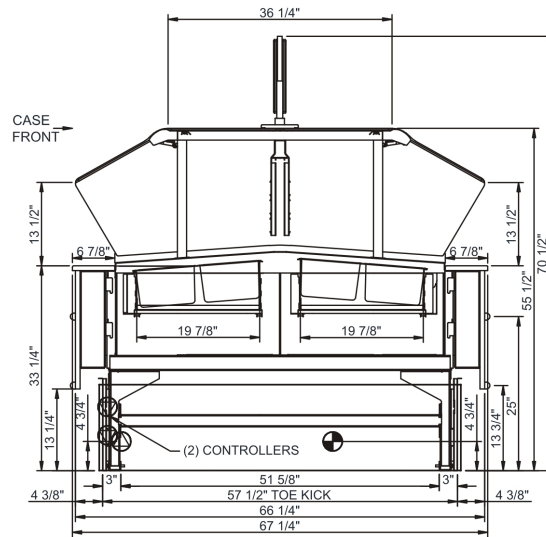
Features	Standard	Options
EXTERIOR COLOR	<input type="checkbox"/> Laminated (Xanadu / Carbon Mesh)	
UPPER FRONT PANEL COLOR	<input type="checkbox"/> Laminated (Xanadu / Carbon Mesh)	
BASE SUPPORT	<input type="checkbox"/> Rail system for shims	
BUMPER END	<input type="checkbox"/> None	<input type="checkbox"/> 1" bumper (black)
BUMPER FRONT	<input type="checkbox"/> 1" bumper (black)	
END PANEL	<input type="checkbox"/> None	<input type="checkbox"/> Full
LOWER FRONT PANEL	<input type="checkbox"/> Stainless steel	<input type="checkbox"/> Publix matte black
TRAY RAIL	<input type="checkbox"/> Kilauea Quartz	
UPPER FRONT PANEL STYLE	<input type="checkbox"/> Flat	
UPPER REAR	<input type="checkbox"/> Mirror back panel	
INTERIOR	<input type="checkbox"/> Stainless steel	
PANS	<input type="checkbox"/> Condiment pan support rails	
SIGN HOLDER	<input type="checkbox"/> Top sign holder	
SNEEZE GUARD	<input type="checkbox"/> Clear lift-up sneeze guard glass w/ stainless steel posts	
TOP LIGHT	<input type="checkbox"/> LED top light(s)	
ELECTRICAL CONNECT	<input type="checkbox"/> Leads	
REFRIGERATION	<input type="checkbox"/> Remote DX refrigeration w/ Carel Heos controller	
MISCELLANEOUS	<input type="checkbox"/> Dressing holder	

Applications

- Two-sided inline cold-well unit for self-service pans.
- Pan capacity =
DPI724R.6628 (12)
Full size
DPI932R.6628 (16)
Full size

Food Bar Island Refrigerated Self-Service Food Bar Island w/ Lift-up Sneeze Guard - Remote DX w/ Carel Heos Controller

Model	L x D x H (Lengths do not include the 3/4" end panel)
DPI724R.6628.8114	85-1/2"L x 67-1/4"D x 55-1/2"H
DPI932R.6628.8114*	111-1/4"L x 67-1/4"D x 55-1/2"H



IMPORTANT NOTES:

1) Refrigerated air flow above and below pans.



WARNING

This product can expose you to chemicals including Urethane (Ethyl Carbamate), which are known to the State of California to cause cancer and birth defects or other reproductive harm. For more information go to www.P65Warnings.ca.gov.

INTENDED ENVIRONMENT

Designed to operate in ambient conditions of 75°F with 55% relative humidity.

WARMEST AVG PRODUCT TEMP

Zone	Temp (°F)
1	38

INTENDED USE OF DISPLAY AREAS

Zone	Intended Use
1	Packaged / unpackaged refrigerated products

* Additional lead-time required
INFORMATION IS SUBJECT TO CHANGE WITHOUT NOTICE. Visit www.structuralconcepts.com for the most current specs.

