

# Technical Information

Structural Concepts®

DELIVERING FRESH. ALWAYS.™

Grocerant - Refrigerated Self-Service Food Bar Island w/ Lift-up Sneeze Guard - Remote DX w/Danfoss Contr.

DIMENSIONS / SHIPPING				
Model	L"	L1"	L2"	Est Wt (lbs)
DPI724R.6628.7716	85.500	86.250	0.000	N/A

ELECTRICAL															
Model	System Circuit Volts			Ph	Frq	Rated Load Amps	Min Cir Amps	Max OCP Amps	Watts	Wires	NEMA Plug	Amps Lights	Amps Fans	Amps Anti-Sweats	Amps Misc/Refrig/Heat
DPI724R.6628.7716	Remote (DX)-Type I Env	Circuit #1	110-120	1	60	2.98	15	15	311	2+G	Leads Multiple	0.70	0.70	1.58	N/A

REFRIGERATION													
Model	Zone	Section	System	Env't	REMOTE REFRIGERATION					GLYCOL / R744 REFRIGERATION			
					SST (°F)	Conv. Rack BTUH	Para. Rack BTUH	Defrost Interval (Hrs)	Defrost Duration	Total GPM	Pressure Drop (psi)	Concent (%)	Liquid Temp (°F)
DPI724R.6628.7716	All	Refrigerator	Remote-DX-Type I Env	Type I	20	3,931	3,640	4.00	30.00	N/A	N/A	N/A	N/A

INTENDED ENVIRONMENT	
Type I - Designed to operate in ambient conditions of 75°F with 55% relative humidity unless noted otherwise under Env't above.	

IMPORTANT NOTES
1) Refrigerated air flow above and below pans.

WARMEST AVERAGE PRODUCT TEMP & INTENDED USE OF ZONES		
Zone	Temp (°F)	Intended Use
1	38	Packaged / unpackaged refrigerated products-Prechilled to Warmest Avg Prod Temp.

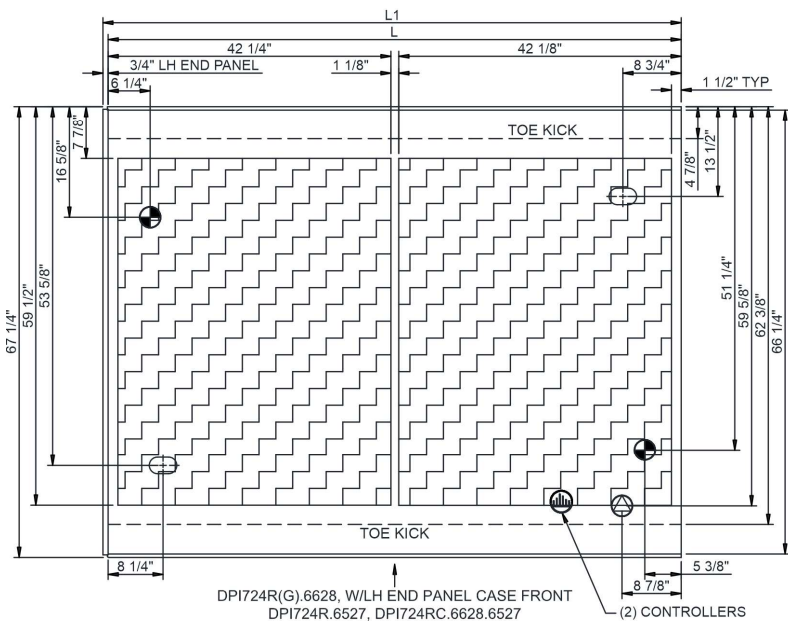
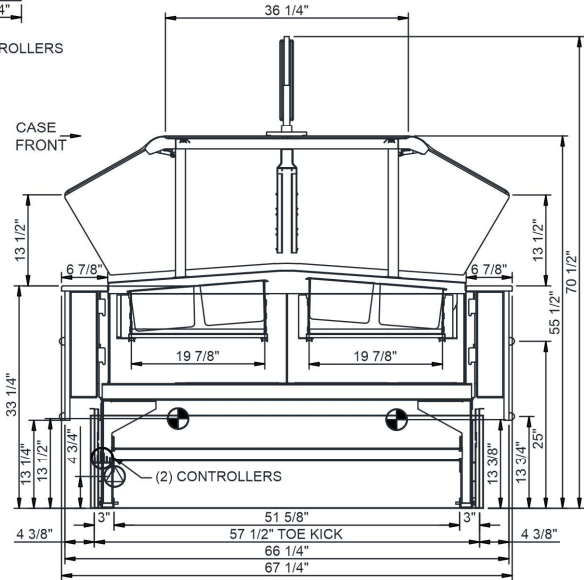
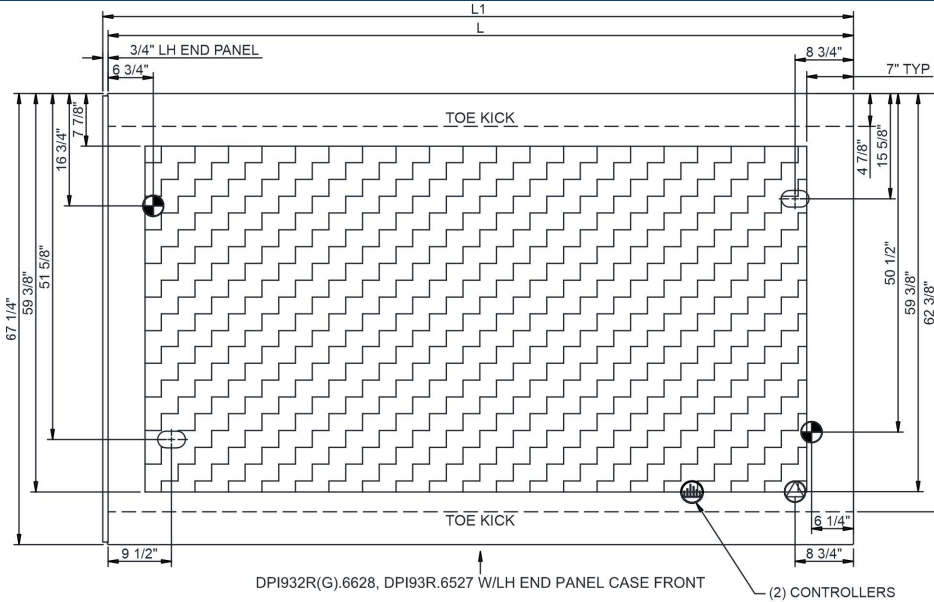
REGULATORY	
All Models	Accordance with AHRI Std 1200 ETL Listed to UL 471 ETL Listed to CAN/CSA 22.2 No. 120 ETL Sanitation to NSF/ANSI 7



In Accordance with  
**AHRI Std 1200**

# Technical Information

Grocerant - Refrigerated Self-Service Food Bar Island w/ Lift-up Sneeze Guard - Remote DX w/Danfoss Contr.



**NOTE: ALL DIMENSIONS APPROXIMATE**

⊕ ELECTRICAL JUNCTION BOX (SUPPLIED WITH 6" LEADS OR POWER CORD).  
○ LOCATION OF DRAIN TUBE FOR REMOTE REF. ONLY (SUPPLIED WITH 3/4" OR 1 1/2" PVC TUBE).

⊕ REFRIGERATION LINE CONNECTION.  
⊕ REMOTE FLOOR SINK & UTILITIES ACCESS AREA.

⊕ SELF-CONTAINED CASE SERVICE ACCESS AREA.  
⊕ DRY CASE SERVICE ACCESS AREA.