

Technical Information

Structural Concepts®

DELIVERING FRESH. ALWAYS.™

Grocerant - Refrigerated Self-Service Modular Food Bar w/ Lift-up Sneeze Guard - Glycol

DIMENSIONS / SHIPPING				
Model	L"	L1"	L2"	Est Wt (lbs)
DP710RG.7174	79.000	80.500	9.500	N/A
DP812RG.7174	92.000	93.500	15.250	N/A

ELECTRICAL															
Model	System Circuit Volts			Ph	Frq	Rated Load Amps	Min Cir Amps	Max OCP Amps	Watts	Wires	NEMA Plug	Amps Lights	Amps Fans	Amps Anti-Sweats	Amps Misc/Refrig/Heat
DP710RG.7174	Remote (GLYCOL)-Type I Env	Circuit #1	110-120	1	60	2.06	15	15	89	2+G	Leads Multiple	0.70	0.70	0.66	N/A
DP812RG.7174	Remote (GLYCOL)-Type I Env	Circuit #1	110-120	1	60	2.19	15	15	105	2+G	Leads Multiple	0.70	0.70	0.79	N/A

REFRIGERATION													
Model	Zone	Section	System	Envt	REMOTE REFRIGERATION					GLYCOL / R744 REFRIGERATION			
					SST (°F)	Conv. Rack BTUH	Para. Rack BTUH	Defrost Interval (Hrs)	Defrost Duration	Total GPM	Pressure Drop (psi)	Concent (%)	Liquid Temp (°F)
DP710RG.7174	All	Wells	Remote-Glycol-Type I Env	Type I	N/A	1,944	1,800	4.00	45.00	0.50	1.02	35%	20.00
DP812RG.7174	All	Wells	Remote-Glycol-Type I Env	Type I	N/A	2,322	2,150	4.00	45.00	1.50	3.00	35%	20.00

INTENDED ENVIRONMENT		
Type I - Designed to operate in ambient conditions of 75°F with 55% relative humidity unless noted otherwise under Envt above.		
WARMEST AVERAGE PRODUCT TEMP & INTENDED USE OF ZONES		
Zone	Temp (°F)	Intended Use
1	38	Unpackaged refrigerated products-Prechilled to Warmest Avg Prod Temp.

IMPORTANT NOTES
1) Refrigerated air flow above and below pans.

REGULATORY	
All Models	Accordance with AHRI Std 1200 ETL Listed to UL 471 ETL Listed to CAN/CSA 22.2 No. 120 ETL Sanitation to NSF/ANSI 7



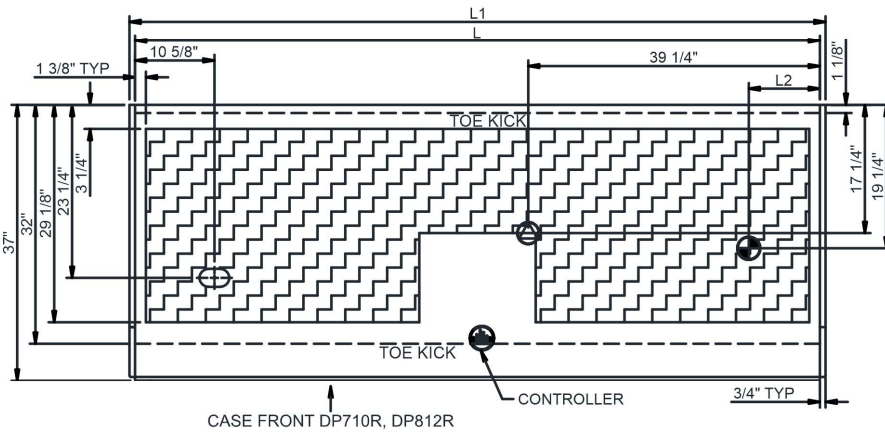
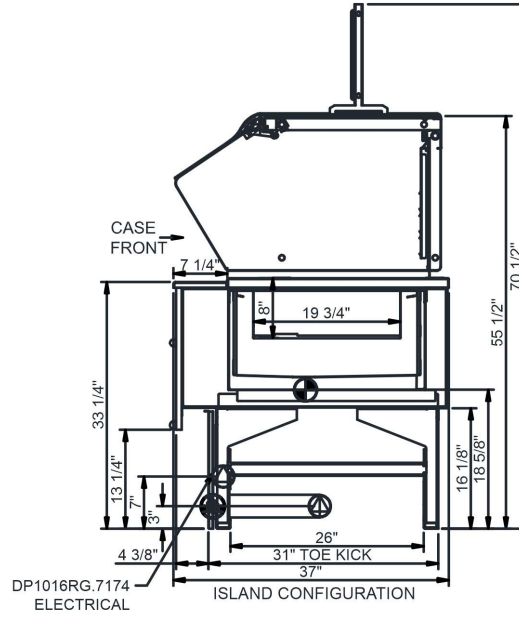
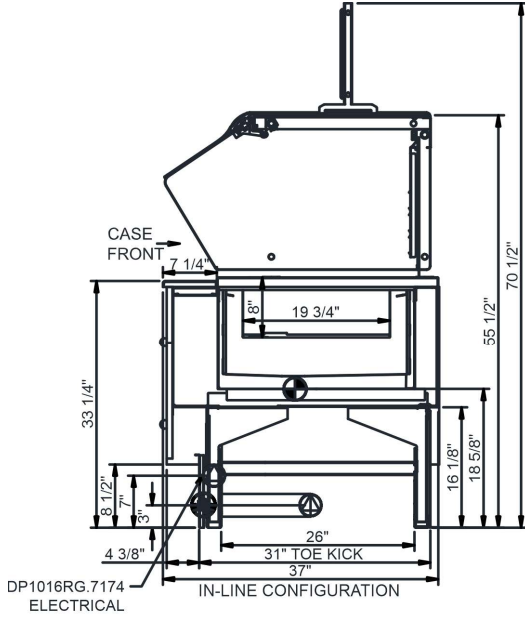
In Accordance with
AHRI Std 1200

Technical Information

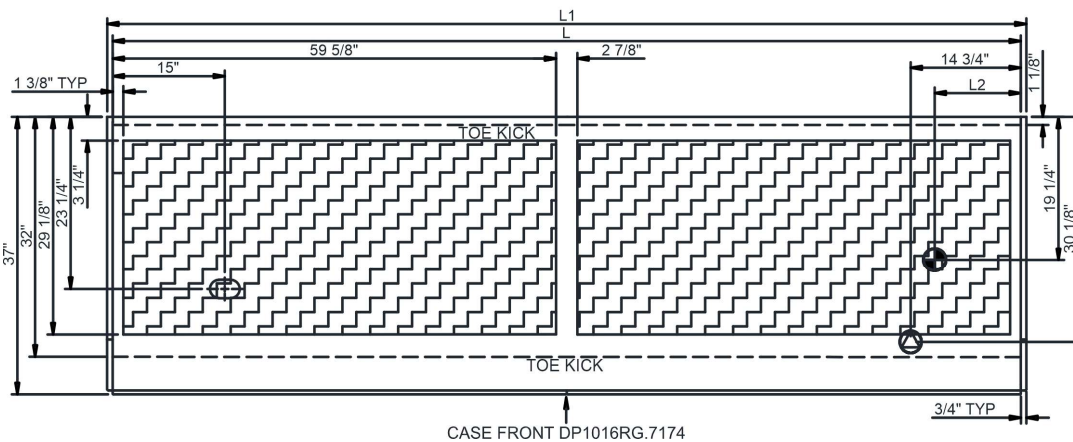
Structural Concepts®

DELIVERING FRESH. ALWAYS.™

Grocerant - Refrigerated Self-Service Modular Food Bar w/ Lift-up Sneeze Guard - Glycol



MODEL	w/ CONTROLLER
DP(L)(X)R.6527	REMOTE DX w/ DIXELL XM670
DP(L)(X)RC.7174.7716	CO2 w/ DANFOSS AK-CC 550A
DP(L)(X)RC.7174.6527	CO2 w/ DIXELL XM670
DP(L)(X)R.7174.7716	REMOTE DX w/ DANFOSS AK-CC 550A
DP(L)(X)R.7174.6527	REMOTE DX w/ DIXELL XM679
MODEL	w/o CONTROLLER
DP(L)(X)R.7174	REMOTE
DP(L)(X)RG.7174	REMOTE GLYCOL



NOTE: ALL DIMENSIONS APPROXIMATE

- ELECTRICAL JUNCTION BOX (SUPPLIED WITH 6" LEADS OR POWER CORD).
- REFRIGERATION LINE CONNECTION.
- REMOTE FLOOR SINK & UTILITIES ACCESS AREA.
- SELF-CONTAINED CASE SERVICE ACCESS AREA.
- DRY CASE SERVICE ACCESS AREA.

- LOCATION OF DRAIN TUBE FOR REMOTE REF. ONLY (SUPPLIED WITH 3/4" OR 1 1/2" PVC TUBE).