

# Olive - Refrigerated 5-Pan Olive Unit Inline - Cherry - Lift-up Sneeze Guard - Remote DX w/ Dixell Controller

## Models

DP610R.5741.6527



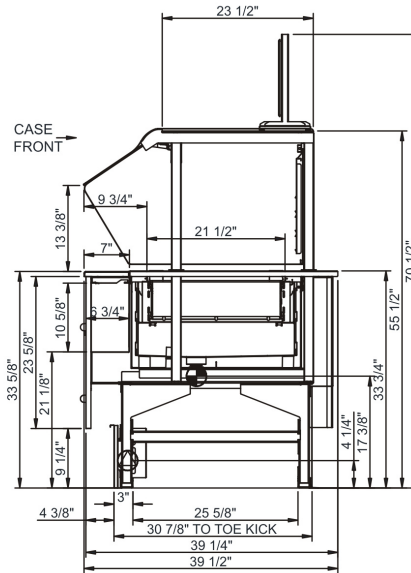
Features	Standard	Options
<b>EXTERIOR COLOR</b>	<input type="checkbox"/> Cherry veneer	
<b>BASE SUPPORT</b>	<input type="checkbox"/> Rail system for shims	
<b>END PANELS</b>	<input type="checkbox"/> Full end panel(s) (Cherry veneer)	<input type="checkbox"/> Stainless steel
<b>LOWER FRONT PANEL</b>	<input type="checkbox"/> Publix matte black	
<b>UPPER FRONT PANEL</b>	<input type="checkbox"/> Cherry veneer	
<b>UPPER REAR</b>	<input type="checkbox"/> Open upper rear	
<b>INTERIOR</b>	<input type="checkbox"/> Stainless steel	
<b>PAN COVERS</b>	<input type="checkbox"/> (15) 1/3 size pan covers & spoons	
<b>PANS</b>	<input type="checkbox"/> (9) 4"D & (9) 2.5"D 1/3 size pans w/ support rails	
<b>SIGN HOLDER</b>	<input type="checkbox"/> Top sign holder	
<b>SNEEZE GUARD</b>	<input type="checkbox"/> Clear lift-up sneeze guard glass w/ stainless steel posts	
<b>ELECTRICAL CONNECT</b>	<input type="checkbox"/> Leads	
<b>REFRIGERATION</b>	<input type="checkbox"/> Remote DX refrigeration w/ Dixell controller	

## Applications

- One-sided Inline cold-well modular unit for self-service pans.
- Accommodates (15) 1/3 size pans.
- Models used in Olive & Prepared Foods.

# Olive Refrigerated 5-Pan Olive Unit Inline - Cherry - Lift-up Sneeze Guard - Remote DX w/ Dixell Controller

Model	L x D x H (Lengths include end panels)
DP610R.5741.6527*	76"L x 39-1/2"D x 70-1/2"H



## IMPORTANT NOTES:

- 1) Units must be shimmed during installation to ensure the unit is level and plumb.
- 2) Refrigeration air flow above and below pans.
- 3) Compressor air front intake, rear discharge.

## WARNING

This product can expose you to chemicals including Urethane (Ethyl Carbamate), which are known to the State of California to cause cancer and birth defects or other reproductive harm. For more information go to [www.P65Warnings.ca.gov](http://www.P65Warnings.ca.gov).

## INTENDED ENVIRONMENT

Designed to operate in ambient conditions of 75°F with 55% relative humidity.

## WARMEST AVG PRODUCT TEMP

Zone	Temp (°F)
1	38

## INTENDED USE OF DISPLAY AREAS

Zone	Intended Use
1	Packaged / unpackaged refrigerated products

\* Additional lead-time required  
 INFORMATION IS SUBJECT TO CHANGE WITHOUT NOTICE. Visit [www.structuralconcepts.com](http://www.structuralconcepts.com) for the most current specs.

