

Salad/Sandwich Prep - Sandwich Prep Case With Refrigerated Rear Storage - CO2 w/ Danfoss Controller

Models

DP46RC.5718A.7716
 DP58RC.5718A.7716
 DP610RC.5718A.7716
 DP812RC.5718A.7716
 DP914RC.5718A.7716



| Features | Standard | Options |
|---------------------------|--|---|
| EXTERIOR COLOR | <input type="checkbox"/> Laminated (Xanadu) | |
| INTERIOR COLOR | <input type="checkbox"/> Stainless steel | |
| BASE SUPPORT | <input type="checkbox"/> Rail system for shims | |
| BUMPER END | <input type="checkbox"/> None | <input type="checkbox"/> 1" bumper on end (black) |
| BUMPER FRONT | <input type="checkbox"/> None | <input type="checkbox"/> 1" bumper on front (black) <input type="checkbox"/> 1" bumper on front (black) (2 rows) |
| END PANEL | <input type="checkbox"/> None | <input type="checkbox"/> Full end panel |
| REAR STORAGE | <input type="checkbox"/> Refrigerated rear storage drawer (4ft, 5ft, 6ft & 8ft models) | <input type="checkbox"/> Non-refrigerated rear storage w/ sliding doors (9ft model) |
| REAR WORK LEDGE | <input type="checkbox"/> White Sanalite® | |
| UPPER FRONT PANEL | <input type="checkbox"/> Laminated (Xanadu) | |
| PANS | <input type="checkbox"/> Condiment pan support rails | <input type="checkbox"/> Black pans |
| SNEEZE GUARD | <input type="checkbox"/> Clear sneeze guard glass w/ stainless steel posts | |
| ELECTRICAL CONNECT | <input type="checkbox"/> Leads | |
| EVAPORATOR COIL | <input type="checkbox"/> E-Coated evaporator coil | |
| REFRIGERATION | <input type="checkbox"/> Remote CO2 refrigeration (specify type) w/ Danfoss controller | |
| MISCELLANEOUS | <input type="checkbox"/> 12 pack FIFO bottles w/ identifier rings | |

Applications

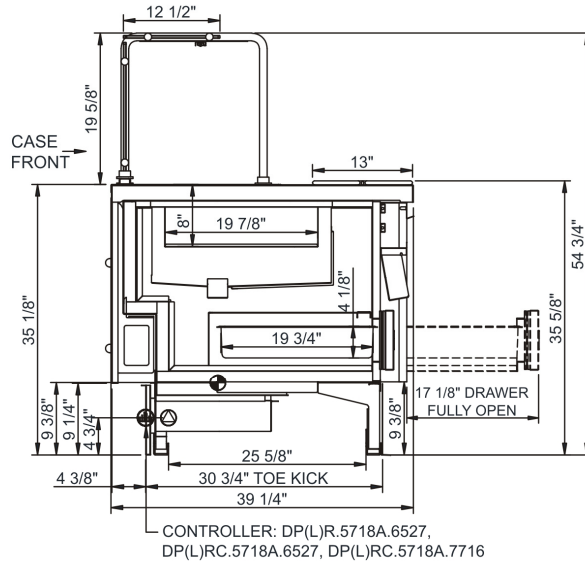
- Upper flat condiment and prep area with lower rear refrigerated storage.

Salad/Sandwich Prep Sandwich Prep Case With Refrigerated Rear Storage - CO2 w/ Danfoss Controller

DRAWER

| Model | L x D x H (Lengths do not include 3/4" end panels) |
|---------------------|---|
| DP46RC.5718A.7716* | 46-1/2"L x 39-1/4"D x 54-3/4"H |
| DP58RC.5718A.7716 | 62-3/4"L x 39-1/4"D x 54-3/4"H |
| DP610RC.5718A.7716 | 76"L x 39-1/4"D x 54-3/4"H |
| DP812RC.5718A.7716* | 88"L x 39-1/4"D x 54-3/4"H |

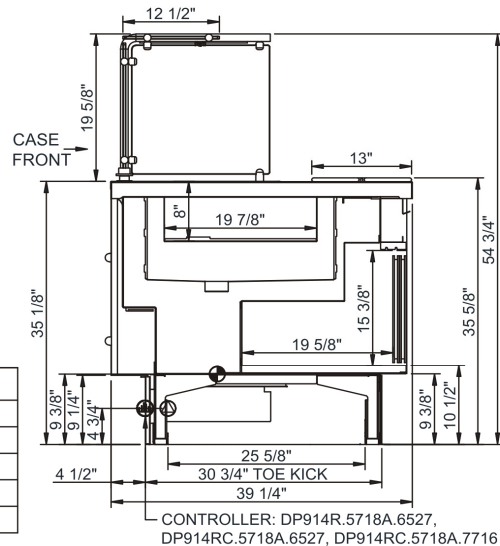
| MODEL | CONTROLLER |
|--------------------|------------------------------|
| DP(L)R.5718A | REMOTE DX w/o CONTROLLER |
| DP(L)RG.5718A | REMOTE GLYCOL w/o CONTROLLER |
| DP(L)R.5718A.6527 | REMOTE DX w/ DIXELL |
| DP(L)RC.5718A.6527 | REMOTE CO2 w/ DIXELL |
| DP(L)RC.5718A.7716 | REMOTE CO2 w/ DANFOSS |



SLIDING DOOR

| Model | L x D x H (Lengths do not include 3/4" end panels) |
|---------------------|---|
| DP914RC.5718A.7716* | 101"L x 39-1/4"D x 54-3/4"H |

| MODEL | CONTROLLER |
|--------------------|------------------------------|
| DP(L)R.5718A | REMOTE DX w/o CONTROLLER |
| DP(L)RG.5718A | REMOTE GLYCOL w/o CONTROLLER |
| DP(L)R.5718A.6527 | REMOTE DX w/ DIXELL |
| DP(L)RC.5718A.6527 | REMOTE CO2 w/ DIXELL |
| DP(L)RC.5718A.7716 | REMOTE CO2 w/ DANFOSS |



IMPORTANT NOTES:

- Units must be shimmed during installation to ensure the unit is level and plumb.

WARNING

This product can expose you to chemicals including Urethane (Ethyl Carbamate), which are known to the State of California to cause cancer and birth defects or other reproductive harm. For more information go to www.P65Warnings.ca.gov.

INTENDED ENVIRONMENT

Designed to operate in ambient conditions of 75°F with 55% relative humidity.

WARMEST AVG PRODUCT TEMP

| Zone | Temp (°F) |
|------|-----------|
| 1 | 38-40 |

INTENDED USE OF DISPLAY AREAS

| Zone | Intended Use |
|------|----------------------------------|
| 1 | Unpackaged refrigerated products |

* Additional lead-time required
 INFORMATION IS SUBJECT TO CHANGE WITHOUT NOTICE. Visit www.structuralconcepts.com for the most current specs.

