

Salad/Sandwich Prep - Sandwich Prep Case With Refrigerated Rear Storage - CO2 w/ Controller

Models

DP46RC.5718A.6527
 DP58RC.5718A.6527
 DP610RC.5718A.6527
 DP812RC.5718A.6527
 DP914RC.5718A.6527



Features	Standard	Options
EXTERIOR COLOR	<input type="checkbox"/> Laminated (Xanadu)	
INTERIOR COLOR	<input type="checkbox"/> Stainless steel	
BASE SUPPORT	<input type="checkbox"/> Rail system for shims	
BUMPER END	<input type="checkbox"/> None	<input type="checkbox"/> 1" bumper on end (black)
BUMPER FRONT	<input type="checkbox"/> None	<input type="checkbox"/> 1" bumper on front (black) <input type="checkbox"/> 1" bumper on front (black) (2 rows)
END PANEL	<input type="checkbox"/> None	<input type="checkbox"/> Full end panel
REAR STORAGE	<input type="checkbox"/> Refrigerated rear storage drawer (4ft, 5ft, 6ft & 8ft models)	<input type="checkbox"/> Non-refrigerated rear storage w/ sliding doors (9ft model)
REAR WORK LEDGE	<input type="checkbox"/> White Sanalite®	
UPPER FRONT PANEL	<input type="checkbox"/> Laminated (Xanadu)	
PANS	<input type="checkbox"/> Condiment pan support rails	<input type="checkbox"/> Black pans
SNEEZE GUARD	<input type="checkbox"/> Clear sneeze guard glass w/ stainless steel posts	
ELECTRICAL CONNECT	<input type="checkbox"/> Leads	
EVAPORATOR COIL	<input type="checkbox"/> E-Coated evaporator coil	
REFRIGERATION	<input type="checkbox"/> Remote CO2 refrigeration (specify type) w/ controller	
MISCELLANEOUS	<input type="checkbox"/> 12 pack FIFO bottles w/ identifier rings	

Applications

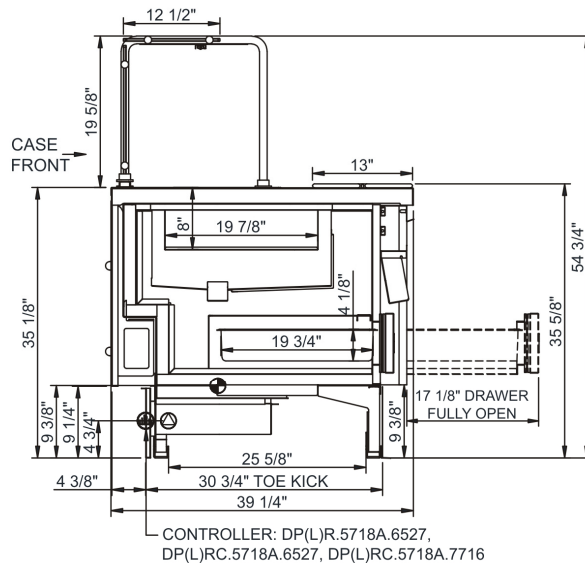
- Upper flat condiment and prep area with lower rear refrigerated storage.

Salad/Sandwich Prep Sandwich Prep Case With Refrigerated Rear Storage - CO2 w/ Controller

DRAWER

Model	L x D x H (Lengths do not include 3/4" end panels)
DP46RC.5718A.6527*	46-1/2"L x 39-1/4"D x 54-3/4"H
DP58RC.5718A.6527	62-3/4"L x 39-1/4"D x 54-3/4"H
DP610RC.5718A.6527	76"L x 39-1/4"D x 54-3/4"H
DP812RC.5718A.6527	88"L x 39-1/4"D x 54-3/4"H

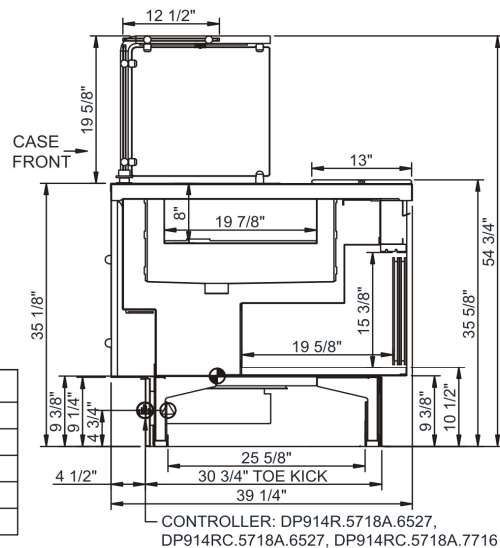
MODEL	CONTROLLER
DP(L)R.5718A	REMOTE DX w/o CONTROLLER
DP(L)RG.5718A	REMOTE GLYCOL w/o CONTROLLER
DP(L)R.5718A.6527	REMOTE DX w/ DIXELL
DP(L)RC.5718A.6527	REMOTE CO2 w/ DIXELL
DP(L)RC.5718A.7716	REMOTE CO2 w/ DANFOSS



SLIDING DOOR

Model	L x D x H (Lengths do not include 3/4" end panels)
DP914RC.5718A.6527	101"L x 39-1/4"D x 54-3/4"H

MODEL	CONTROLLER
DP(L)R.5718A	REMOTE DX w/o CONTROLLER
DP(L)RG.5718A	REMOTE GLYCOL w/o CONTROLLER
DP(L)R.5718A.6527	REMOTE DX w/ DIXELL
DP(L)RC.5718A.6527	REMOTE CO2 w/ DIXELL
DP(L)RC.5718A.7716	REMOTE CO2 w/ DANFOSS



IMPORTANT NOTES:

- Units must be shimmed during installation to ensure the unit is level and plumb.

WARNING

This product can expose you to chemicals including Urethane (Ethyl Carbamate), which are known to the State of California to cause cancer and birth defects or other reproductive harm. For more information go to www.P65Warnings.ca.gov.

INTENDED ENVIRONMENT

Designed to operate in ambient conditions of 75°F with 55% relative humidity.

WARMEST AVG PRODUCT TEMP

Zone	Temp (°F)
1	38-40

INTENDED USE OF DISPLAY AREAS

Zone	Intended Use
1	Unpackaged refrigerated products

For more information on any of our products or services please visit us on the web at:

www.structuralconcepts.com