

Salad/Sandwich Prep - Sandwich Prep Case With Refrigerated Rear Storage - Remote DX w/ Carel Heos Controller

Models

DP46R.5718A.8114
 DP58R.5718A.8114
 DP610R.5718A.8114
 DP812R.5718A.8114
 DP914R.5718A.8114



Applications

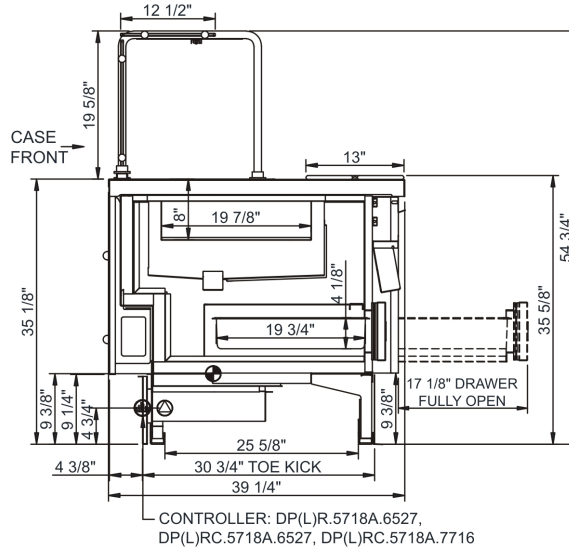
- Upper flat condiment and prep area with lower rear refrigerated storage.

Features	Standard	Options
EXTERIOR COLOR	<input type="checkbox"/> Laminated (Xanadu)	
INTERIOR COLOR	<input type="checkbox"/> Stainless steel	
UPPER FRONT PANEL COLOR	<input type="checkbox"/> Laminated (Xanadu)	
BASE SUPPORT	<input type="checkbox"/> Rail system for shims	
BUMPER END	<input type="checkbox"/> None	<input type="checkbox"/> 1" bumper (black) (3 rows)
BUMPER FRONT	<input type="checkbox"/> 1" bumper (black) (2 rows)	
END PANELS	<input type="checkbox"/> None	<input type="checkbox"/> Full
LOWER FRONT PANEL	<input type="checkbox"/> Stainless steel	<input type="checkbox"/> Publix matte black
REAR STORAGE	<input type="checkbox"/> Refrigerated rear storage drawer (4ft, 5ft, 6ft & 8ft models)	<input type="checkbox"/> Non-refrigerated rear storage w/ sliding doors (9ft model)
REAR WORK LEDGE	<input type="checkbox"/> White Sanalite®	
UPPER FRONT PANEL STYLE	<input type="checkbox"/> Offset	
PANS	<input type="checkbox"/> Condiment pan support rails	<input type="checkbox"/> Black pans
SNEEZE GUARD	<input type="checkbox"/> Clear sneeze guard glass w/ stainless steel posts	
ELECTRICAL CONNECT	<input type="checkbox"/> Leads	
EVAPORATOR COIL	<input type="checkbox"/> E-Coated evaporator coil	
REFRIGERATION	<input type="checkbox"/> Remote DX refrigeration w/ Carel Heos controller	
MISCELLANEOUS	<input type="checkbox"/> 12 pack FIFO bottles w/ identifier rings	

Salad/Sandwich Prep Sandwich Prep Case With Refrigerated Rear Storage - Remote DX w/ Carel Heos Controller

DRAWER

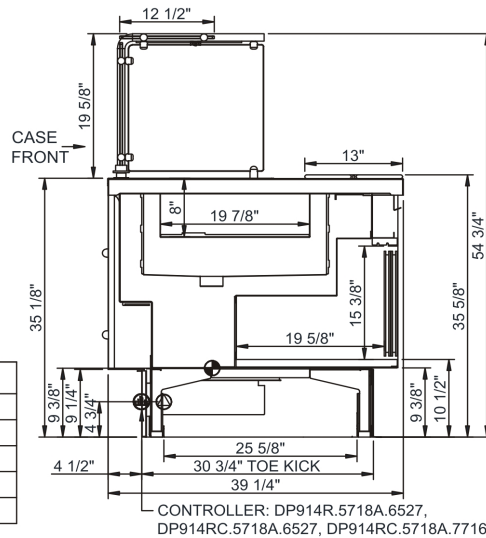
Model	L x D x H (Lengths do not include 3/4" end panels)
DP46R.5718A.8114*	46-1/2"L x 39-1/4"D x 54-3/4"H
DP58R.5718A.8114	62-3/4"L x 39-1/4"D x 54-3/4"H
DP610R.5718A.8114	76"L x 39-1/4"D x 54-3/4"H
DP812R.5718A.8114*	88"L x 39-1/4"D x 54-3/4"H



MODEL	CONTROLLER
DP(L)R.5718A	REMOTE DX w/o CONTROLLER
DP(L)RG.5718A	REMOTE GLYCOL w/o CONTROLLER
DP(L)R.5718A.6527	REMOTE DX w/ DIXELL
DP(L)RC.5718A.6527	REMOTE CO2 w/ DIXELL
DP(L)RC.5718A.7716	REMOTE CO2 w/ DANFOSS

SLIDING DOOR

Model	L x D x H (Lengths do not include 3/4" end panels)
DP914R.5718A.8114*	101"L x 39-1/4"D x 54-3/4"H



MODEL	CONTROLLER
DP(L)R.5718A	REMOTE DX w/o CONTROLLER
DP(L)RG.5718A	REMOTE GLYCOL w/o CONTROLLER
DP(L)R.5718A.6527	REMOTE DX w/ DIXELL
DP(L)RC.5718A.6527	REMOTE CO2 w/ DIXELL
DP(L)RC.5718A.7716	REMOTE CO2 w/ DANFOSS

IMPORTANT NOTES:

1) Units must be shimmed during installation to ensure the unit is level and plumb.



WARNING

This product can expose you to chemicals including Urethane (Ethyl Carbamate), which are known to the State of California to cause cancer and birth defects or other reproductive harm. For more information go to www.P65Warnings.ca.gov.

INTENDED ENVIRONMENT

Designed to operate in ambient conditions of 75°F with 55% relative humidity.

WARMEST AVG PRODUCT TEMP

Zone	Temp (°F)
1	38-40

INTENDED USE OF DISPLAY AREAS

Zone	Intended Use
1	Unpackaged refrigerated products

* Additional lead-time required
INFORMATION IS SUBJECT TO CHANGE WITHOUT NOTICE. Visit www.structuralconcepts.com for the most current specs.

