

Technical Information

Oasis - Refrigerated Self-Service Case 32"D

Structural Concepts®

DELIVERING FRESH. ALWAYS.™

DIMENSIONS / SHIPPING				
Model	L"	L1"	L2"	Est Wt (lbs)
B3632	34.000	36.750	3.125	N/A
B4732	45.000	47.750	3.125	N/A
B5932	57.000	59.750	3.125	N/A
B7132	69.000	71.750	3.125	N/A
B8832	85.625	88.375	3.125	N/A

ELECTRICAL															
Model	System Circuit Volts			Ph	Frq	Rated Load Amps	Min Cir Amps	Max OCP Amps	Watts	Wires	NEMA Plug	Amps Lights	Amps Fans	Amps Anti-Sweats	Amps Misc/Refrig/Heat
B3632	Remote (DX)-Type II Env	Circuit #1	110-120	1	60	1.13	15	15	99	2+G	Leads Multiple	0.83	0.30		N/A
	Remote (DX)-Type I Env	Circuit #1	110-120	1	60	1.13	15	15	99	2+G	Leads Multiple	0.83	0.30		N/A
	Remote (GLYCOL)	Circuit #1	110-120	1	60	1.13	15	15	99	2+G	Leads Multiple	0.83	0.30		N/A
	Self-Contained (R449A)-Type II Env	Circuit #1	110-120	1	60	16.00	20	20	1,371	2+G	5-20P or L5-20P	0.70	0.96	4.10	10.50
B4732	Remote (DX)-Type II Env	Circuit #1	110-120	1	60	1.47	15	15	139	2+G	Leads Multiple	1.17	0.30		N/A
	Remote (DX)-Type I Env	Circuit #1	110-120	1	60	1.47	15	15	139	2+G	Leads Multiple	1.17	0.30		N/A
	Self-Contained (R449A)-Type II Env	Circuit #1	208-240	1	60	9.55	20	20	1,750	2+G	6-20P or L6-20P	0.36	0.86	2.23	6.10
	Self-Contained (R449A)-Type II Env	Circuit #1	208-240	1	50	13.40	20	20	2,290	2+G	Leads Single	0.36	0.87	3.48	9.00
B5932	Self-Contained (R449A)	Circuit #1	208-240	1	60	9.23	20	20	1,725	2+G	6-20P or L6-20P	N/A	0.54	2.23	6.46
	Remote (DX)-Type I Env	Circuit #1	110-120	1	60	1.52	15	15	98	2+G	Leads Multiple	0.70	0.60	0.22	N/A
	Remote (DX)-Type II Env	Circuit #1	110-120	1	60	1.52	15	15	98	2+G	Leads Multiple	0.70	0.60	0.22	N/A
	Remote (GLYCOL)	Circuit #1	110-120	1	60	1.52	15	15	98	2+G	Leads Single	0.70	0.60	0.22	N/A
	Self-Contained (R449A)-Type II Env	Circuit #1	208-240	1	60	12.00	20	20	2,309	2+G	6-20P or L6-20P	0.36	1.18	3.52	7.70
B7132	Self-Contained (R449A)-Type II Env	Circuit #1	208-240	1	50	13.54	20	20	889	2+G	Leads Single	N/A	1.18	3.52	9.46
	Remote (DX)-Type II Env	Circuit #1	110-120	1	60	2.36	15	15	238	2+G	Leads Multiple	1.68	0.60		0.08
	Remote (DX)-Type I Env	Circuit #1	110-120	1	60	2.36	15	15	238	2+G	Leads Multiple	1.68	0.60		0.08
	Self-Contained (R449A)-Type II Env	Circuit #1	208-240	1	60	15.32	20	20	2,902	2+G	6-20P or L6-20P	0.36	1.16	3.55	10.25
B8832	Remote (R404A)-Type II Env	Circuit #1	110-120	1	60	3.13	15	15	306	2+G	Leads Multiple	1.93	1.20		N/A
	Remote (R404A)-Type I Env	Circuit #1	110-120	1	60	3.13	15	15	306	2+G	Leads Multiple	1.93	1.20		N/A
	Self-Contained (R449A)-Type II Env	Circuit #1	208-240	1	60	20.41	30	30	2,901	2+G	6-30P or L6-30P	0.72	2.04	3.55	14.10

REFRIGERATION													
Model	Zone	Section	System	Envt	REMOTE REFRIGERATION					GLYCOL / R744 REFRIGERATION			
					SST (°F)	Conv. Rack BTUH	Para. Rack BTUH	Defrost Interval (Hrs)	Defrost Duration	Total GPM	Pressure Drop (psi)	Concent (%)	Liquid Temp (°F)
B3632	All	Main	Remote-DX-Type II Env	Type II	20	4,320	4,000	4.00	25.00	N/A	N/A	N/A	N/A
	All	Main	Remote-DX-Type I Env	Type I	20	3,542	3,280	4.00	25.00	N/A	N/A	N/A	N/A
	All	Main	Remote-Glycol	Type II	N/A	4,320	4,000	4.00	25.00	1.50	2.58	35%	20.00
B4732	All	Refrigerator	Self-Contained-R449A-Type II Env	Type II	N/A	N/A	N/A	N/A	N/A	N/A	N/A	N/A	N/A
	All	Main	Remote-DX-Type II Env	Type II	20	5,918	5,480	4.00	25.00	N/A	N/A	N/A	N/A
	All	Main	Remote-DX-Type I Env	Type I	20	4,882	4,520	4.00	25.00	N/A	N/A	N/A	N/A
B5932	All	Refrigerator	Self-Contained-R449A-Type II Env	Type II	N/A	N/A	N/A	N/A	N/A	N/A	N/A	N/A	N/A
	All	Main	Remote-DX-Type II Env	Type II	20	7,042	6,520	4.00	25.00	N/A	N/A	N/A	N/A
	All	Main	Remote-DX-Type I Env	Type I	20	5,746	5,320	4.00	25.00	N/A	N/A	N/A	N/A
	All	Main	Remote-Glycol	Type II	N/A	7,042	6,520	4.00	45.00	2.50	5.00	35%	20.00
B7132	All	Refrigerator	Self-Contained-R449A-Type II Env	Type II	N/A	N/A	N/A	N/A	N/A	N/A	N/A	N/A	N/A
	All	Main	Remote-DX-Type II Env	Type II	20	8,618	7,980	4.00	25.00	N/A	N/A	N/A	N/A
	All	Main	Remote-DX-Type I Env	Type I	20	7,042	6,520	4.00	25.00	N/A	N/A	N/A	N/A
B8832	All	Refrigerator	Self-Contained-R449A-Type II Env	Type I	N/A	N/A	N/A	N/A	N/A	N/A	N/A	N/A	N/A
	All	Main	Remote-R404A-Type II Env	Type II	20	13,046	12,080	4.00	25.00	N/A	N/A	N/A	N/A
	All	Main	Remote-R404A-Type I Env	Type I	20	10,606	9,820	4.00	25.00	N/A	N/A	N/A	N/A

Technical Information

Oasis - Refrigerated Self-Service Case 32"D

Structural Concepts®

DELIVERING FRESH. ALWAYS.™

INTENDED ENVIRONMENT

Type II - Designed to operate in ambient conditions of 80°F and 55% relative humidity unless noted otherwise under Env't above.

WARMEST AVERAGE PRODUCT TEMP & INTENDED USE OF ZONES

Zone	Temp (°F)	Intended Use
1	40	Packaged refrigerated products

IMPORTANT NOTES

- 1) ELECTRICAL NOTE: If GFCI is required, a GFCI breaker MUST be used in lieu of a GFCI receptacle
- 2) Performance issues (product temperatures, water on floor, etc.) caused by adverse conditions are not covered by warranty.
- 3) Keep unit at least 15' from exterior doors, overhead HVAC vents, or any air curtain disruption.
- 4) End panels must be tightly joined or kept at least 6" away from any structure to prevent condensation.
- 5) Do not expose unit to direct sunlight or any heat source (ovens, fryers, etc.).
- 6) Tile floors, low ceilings, or small rooms will increase noise level.
- 7) Rear Door option changes air discharge to lower rear.
- 8) Compressor air lower front intake and upper front discharge. Front panel cannot be blocked.



REGULATORY

All Models	Accordance with AHRI Std 1200 ETL Listed to UL 471 ETL Listed to CAN/CSA 22.2 No. 120 ETL Sanitation to NSF/ANSI 7
------------	---



In Accordance with
AHRI Std 1200

NOTE: ALL DIMENSIONS APPROXIMATE

 ELECTRICAL JUNCTION BOX (SUPPLIED WITH 6" LEADS OR POWER CORD).
 LOCATION OF DRAIN TUBE FOR REMOTE REF. ONLY (SUPPLIED WITH 3/4" OR 1 1/2" PVC TUBE).

 REFRIGERATION LINE CONNECTION.
 REMOTE FLOOR SINK & UTILITIES ACCESS AREA.

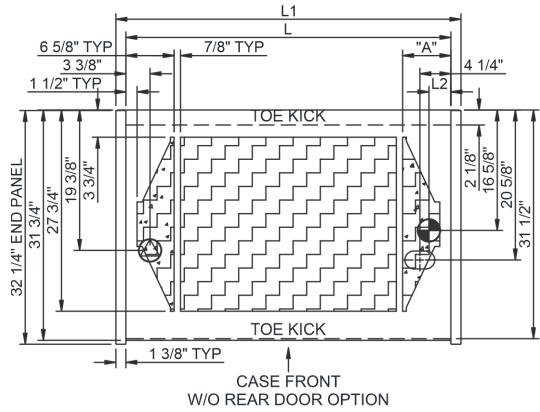
 SELF-CONTAINED CASE SERVICE ACCESS AREA.
 DRY CASE SERVICE ACCESS AREA.

Technical Information

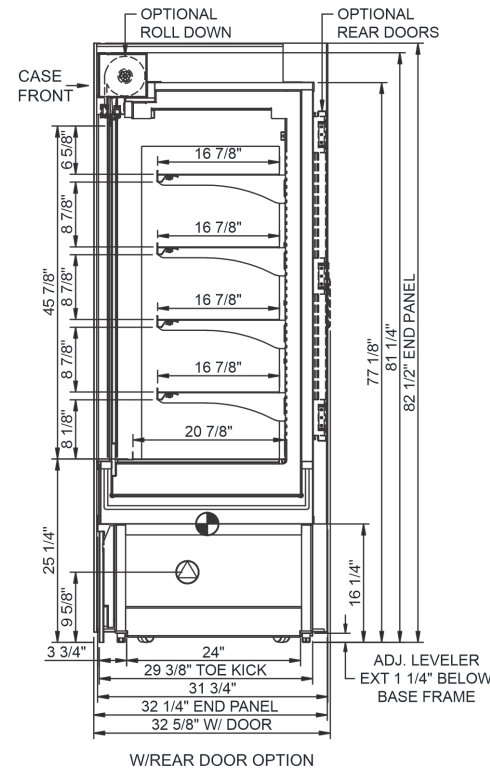
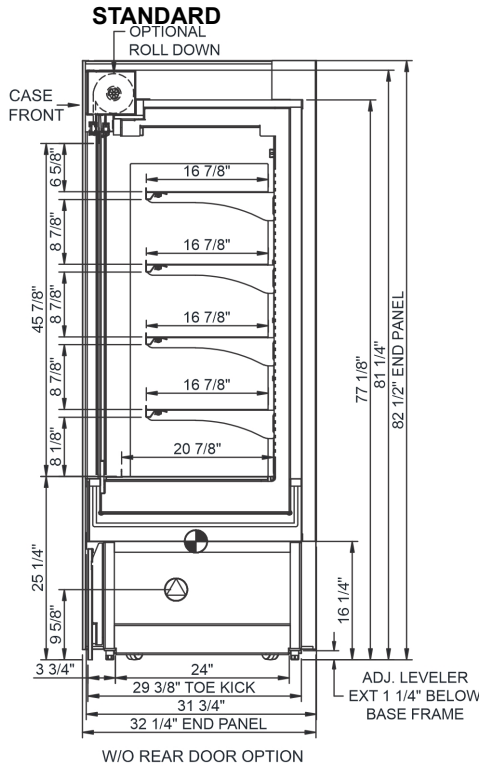
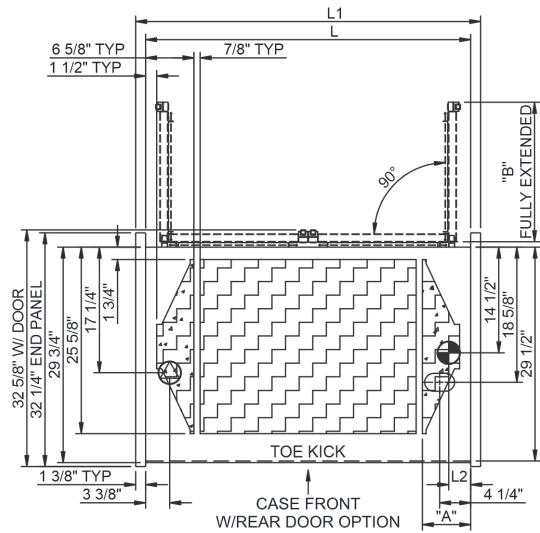
Oasis - Refrigerated Self-Service Case 32"D

Structural Concepts®

DELIVERING FRESH. ALWAYS.™



	"A"	"B"
B3632	6 5/8"	28 3/8"
B4732	6 5/8"	18"
B5932	6 5/8"	18"
B7132	14 1/8"	28 3/8"
B8832	17 3/4"	17"



NOTE: ALL DIMENSIONS APPROXIMATE

ELECTRICAL JUNCTION BOX (SUPPLIED WITH 6" LEADS OR POWER CORD).
 LOCATION OF DRAIN TUBE FOR REMOTE REF. ONLY (SUPPLIED WITH 3/4" OR 1 1/2" PVC TUBE).

REFRIGERATION LINE CONNECTION.
 REMOTE FLOOR SINK & UTILITIES ACCESS AREA.

SELF-CONTAINED CASE SERVICE ACCESS AREA.
 DRY CASE SERVICE ACCESS AREA.